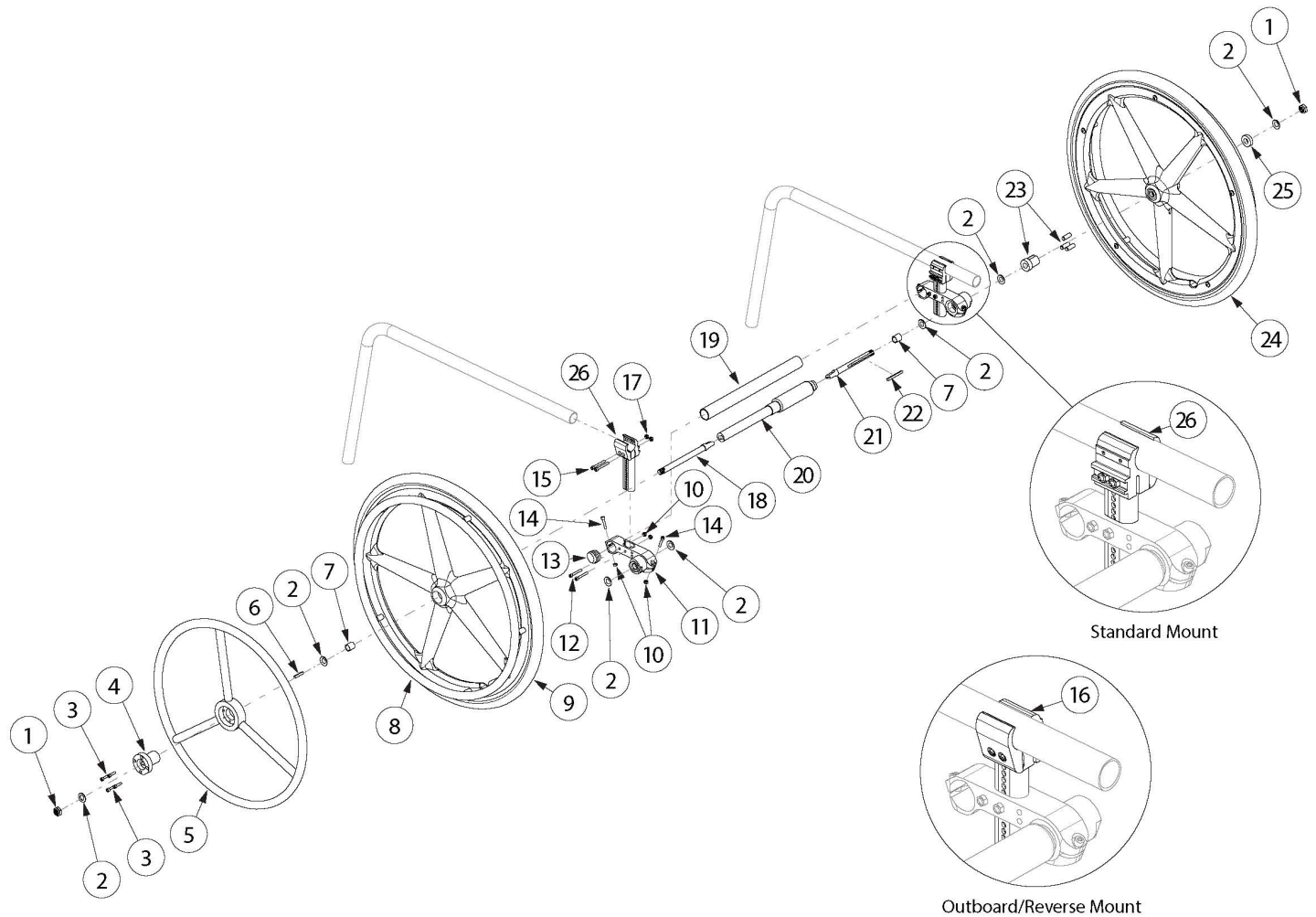


(Discontinued) Klik One Arm Drive Blade Style



One Arm Drive Kits do not include rear tires <p>

If retrofitting to add the One Arm Drive, new rear towers are required in addition to the complete One Arm Drive system. If retrofitting from Hex One Arm Drive, you will need a new drive shaft, axles (#18 and #21), One Arm Drive Spacer (#7), Axle Mount Assemblies (#11) and installation instruction DCN0504. Reference Drive Shaft Chart to determine which drive shaft is needed for desired Rear Wheel Spacing. See order form for Rear Wheel Spacing restrictions.

Item Number	Part Number	Description	Quantity	Retail
1-4, 5a, 6, 7, 8a, 9a, 10-18, 20a, 21a, 22, 23a, 24a, 25	109569	Clik Blade One Arm Drive Retrofit Kit, 0° Camber, 20" Mag with Aluminum Drive Handrim, 8.72" Drive Shaft <i>For a complete retrofit, add correct One Arm Drive Camber Tube Kit based off seat width</i>	1	\$2,961.30
1-4, 5a, 6, 7, 8a, 9a, 10-18, 20a, 21b, 22, 23a, 24a, 25	109570	Clik Blade One Arm Drive Retrofit Kit, 0° Camber, 20" Mag with Aluminum Drive Handrim, 8.72" Drive Shaft, Short Axle Assembly <i>For a complete retrofit, add correct One Arm Drive Camber Tube Kit based off seat width</i>	1	\$2,961.30

Item Number	Part Number	Description	Quantity	Retail
1-4, 5a, 6, 7, 8a, 9a, 10-18, 20b, 21a, 22, 23a, 24a, 25	109571	Clik Blade One Arm Drive Retrofit Kit, 0° Camber, 20" Mag with Aluminum Drive Handrim, 9.72" Drive Shaft <i>For a complete retrofit, add correct One Arm Drive Camber Tube Kit based off seat width</i>	1	\$2,961.30
1-4, 5a, 6, 7, 8a, 9a, 10-18, 20c, 21a, 22, 23a, 24a, 25	109572	Clik Blade One Arm Drive Retrofit Kit, 0° Camber, 20" Mag with Aluminum Drive Handrim, 10.74" Drive Shaft <i>For a complete retrofit, add correct One Arm Drive Camber Tube Kit based off seat width</i>	1	\$2,961.30
1-4, 5a, 6, 7, 8a, 9a, 10-18, 20d, 21a, 22, 23a, 24a, 25	109573	Clik Blade One Arm Drive Retrofit Kit, 0° Camber, 20" Mag with Aluminum Drive Handrim, 11.72" Drive Shaft <i>For a complete retrofit, add correct One Arm Drive Camber Tube Kit based off seat width</i>	1	\$2,961.30
1-4, 5a, 6, 7, 8a, 9a, 10-18, 20e, 21a, 22, 23a, 24a, 25	109574	Clik Blade One Arm Drive Retrofit Kit, 0° Camber, 20" Mag with Aluminum Drive Handrim, 12.72" Drive Shaft <i>For a complete retrofit, add correct One Arm Drive Camber Tube Kit based off seat width</i>	1	\$2,961.30
1-4, 5a, 6, 7, 8a, 9a, 10-18, 20f, 21a, 22, 23a, 24a, 25	109575	Clik Blade One Arm Drive Retrofit Kit, 0° Camber, 20" Mag with Aluminum Drive Handrim, 13.82" Drive Shaft <i>For a complete retrofit, add correct One Arm Drive Camber Tube Kit based off seat width</i>	1	\$2,961.30
1-4, 5a, 6, 7, 8a, 9a, 10-18, 20g, 21a, 22, 23a, 24a, 25	109576	Clik Blade One Arm Drive Retrofit Kit, 0° Camber, 20" Mag with Aluminum Drive Handrim, 14.67" Drive Shaft <i>For a complete retrofit, add correct One Arm Drive Camber Tube Kit based off seat width</i>	1	\$2,961.30
1-4, 5d, 6, 7, 8a, 9a, 10-18, 20a, 21a, 22, 23a, 24a, 25	109580	Clik Blade One Arm Drive Retrofit Kit, 0° Camber, 20" Mag with Poly Coated Drive Handrim, 8.72" Drive Shaft <i>For a complete retrofit, add correct One Arm Drive Camber Tube Kit based off seat width</i>	1	\$3,113.64
1-4, 5d, 6, 7, 8a, 9a, 10-18, 20a, 21b, 22, 23a, 24a, 25	109581	Clik Blade One Arm Drive Retrofit Kit, 0° Camber, 20" Mag with Poly Coated Drive Handrim, 8.72" Drive Shaft, Short Axle Assembly <i>For a complete retrofit, add correct One Arm Drive Camber Tube Kit based off seat width</i>	1	\$3,113.64
1-4, 5d, 6, 7, 8a, 9a, 10-18, 20b, 21a, 22, 23a, 24a, 25	109582	Clik Blade One Arm Drive Retrofit Kit, 0° Camber, 20" Mag with Poly Coated Drive Handrim, 9.72" Drive Shaft <i>For a complete retrofit, add correct One Arm Drive Camber Tube Kit based off seat width</i>	1	\$3,113.64
1-4, 5d, 6, 7, 8a, 9a, 10-18, 20c, 21a, 22, 23a, 24a, 25	109583	Clik Blade One Arm Drive Retrofit Kit, 0° Camber, 20" Mag with Poly Coated Drive Handrim, 10.74" Drive Shaft <i>For a complete retrofit, add correct One Arm Drive Camber Tube Kit based off seat width</i>	1	\$3,113.64

Item Number	Part Number	Description	Quantity	Retail
1-4, 5d, 6, 7, 8a, 9a, 10-18, 20d, 21a, 22, 23a, 24a, 25	109584	Clik Blade One Arm Drive Retrofit Kit, 0° Camber, 20" Mag with Poly Coated Drive Handrim, 11.72" Drive Shaft <i>For a complete retrofit, add correct One Arm Drive Camber Tube Kit based off seat width</i>	1	\$3,113.64
1-4, 5d, 6, 7, 8a, 9a, 10-18, 20e, 21a, 22, 23a, 24a, 25	109585	Clik Blade One Arm Drive Retrofit Kit, 0° Camber, 20" Mag with Poly Coated Drive Handrim, 12.72" Drive Shaft <i>For a complete retrofit, add correct One Arm Drive Camber Tube Kit based off seat width</i>	1	\$3,113.64
1-4, 5d, 6, 7, 8a, 9a, 10-18, 20f, 21a, 22, 23a, 24a, 25	109586	Clik Blade One Arm Drive Retrofit Kit, 0° Camber, 20" Mag with Poly Coated Drive Handrim, 13.82" Drive Shaft <i>For a complete retrofit, add correct One Arm Drive Camber Tube Kit based off seat width</i>	1	\$3,113.64
1-4, 5d, 6, 7, 8a, 9a, 10-18, 20g, 21a, 22, 23a, 24a, 25	109587	Clik Blade One Arm Drive Retrofit Kit, 0° Camber, 20" Mag with Poly Coated Drive Handrim, 14.67" Drive Shaft <i>For a complete retrofit, add correct One Arm Drive Camber Tube Kit based off seat width</i>	1	\$3,113.64
1-4, 5b, 6, 7, 8b, 9b, 10-18, 20a, 21a, 22, 23a, 24b, 25	109591	Clik Blade One Arm Drive Retrofit Kit, 0° Camber, 22" Mag with Aluminum Drive Handrim, 8.72" Drive Shaft <i>For a complete retrofit, add correct One Arm Drive Camber Tube Kit based off seat width</i>	1	\$2,950.80
1-4, 5b, 6, 7, 8b, 9b, 10-18, 20a, 21b, 22, 23a, 24b, 25	109592	Clik Blade One Arm Drive Retrofit Kit, 0° Camber, 22" Mag with Aluminum Drive Handrim, 8.72" Drive Shaft, Short Axle Assembly <i>For a complete retrofit, add correct One Arm Drive Camber Tube Kit based off seat width</i>	1	\$2,950.80
1-4, 5b, 6, 7, 8b, 9b, 10-18, 20b, 21a, 22, 23a, 24b, 25	109593	Clik Blade One Arm Drive Retrofit Kit, 0° Camber, 22" Mag with Aluminum Drive Handrim, 9.72" Drive Shaft <i>For a complete retrofit, add correct One Arm Drive Camber Tube Kit based off seat width</i>	1	\$2,950.80
1-4, 5b, 6, 7, 8b, 9b, 10-18, 20c, 21a, 22, 23a, 24b, 25	109594	Clik Blade One Arm Drive Retrofit Kit, 0° Camber, 22" Mag with Aluminum Drive Handrim, 10.74" Drive Shaft <i>For a complete retrofit, add correct One Arm Drive Camber Tube Kit based off seat width</i>	1	\$2,950.80
1-4, 5b, 6, 7, 8b, 9b, 10-18, 20d, 21a, 22, 23a, 24b, 25	109595	Clik Blade One Arm Drive Retrofit Kit, 0° Camber, 22" Mag with Aluminum Drive Handrim, 11.72" Drive Shaft <i>For a complete retrofit, add correct One Arm Drive Camber Tube Kit based off seat width</i>	1	\$2,950.80
1-4, 5b, 6, 7, 8b, 9b, 10-18, 20e, 21a, 22, 23a, 24b, 25	109596	Clik Blade One Arm Drive Retrofit Kit, 0° Camber, 22" Mag with Aluminum Drive Handrim, 12.72" Drive Shaft <i>For a complete retrofit, add correct One Arm Drive Camber Tube Kit based off seat width</i>	1	\$2,950.80

Item Number	Part Number	Description	Quantity	Retail
1-4, 5b, 6, 7, 8b, 9b, 10-18, 20f, 21a, 22, 23a, 24b, 25	109597	Clik Blade One Arm Drive Retrofit Kit, 0° Camber, 22" Mag with Aluminum Drive Handrim, 13.82" Drive Shaft <i>For a complete retrofit, add correct One Arm Drive Camber Tube Kit based off seat width</i>	1	\$2,950.80
1-4, 5b, 6, 7, 8b, 9b, 10-18, 20g, 21a, 22, 23a, 24b, 25	109598	Clik Blade One Arm Drive Retrofit Kit, 0° Camber, 22" Mag with Aluminum Drive Handrim, 14.67" Drive Shaft <i>For a complete retrofit, add correct One Arm Drive Camber Tube Kit based off seat width</i>	1	\$2,950.80
1-4, 5e, 6, 7, 8b, 9b, 10-18, 20a, 21a, 22, 23a, 24b, 25	109602	Clik Blade One Arm Drive Retrofit Kit, 0° Camber, 22" Mag with Poly Coated Drive Handrim, 8.72" Drive Shaft <i>For a complete retrofit, add correct One Arm Drive Camber Tube Kit based off seat width</i>	1	\$3,103.14
1-4, 5e, 6, 7, 8b, 9b, 10-18, 20a, 21b, 22, 23a, 24b, 25	109603	Clik Blade One Arm Drive Retrofit Kit, 0° Camber, 22" Mag with Poly Coated Drive Handrim, 8.72" Drive Shaft, Short Axle Assembly <i>For a complete retrofit, add correct One Arm Drive Camber Tube Kit based off seat width</i>	1	\$3,103.14
1-4, 5e, 6, 7, 8b, 9b, 10-18, 20b, 21a, 22, 23a, 24b, 25	109604	Clik Blade One Arm Drive Retrofit Kit, 0° Camber, 22" Mag with Poly Coated Drive Handrim, 9.72" Drive Shaft <i>For a complete retrofit, add correct One Arm Drive Camber Tube Kit based off seat width</i>	1	\$3,103.14
1-4, 5e, 6, 7, 8b, 9b, 10-18, 20c, 21a, 22, 23a, 24b, 25	109605	Clik Blade One Arm Drive Retrofit Kit, 0° Camber, 22" Mag with Poly Coated Drive Handrim, 10.74" Drive Shaft <i>For a complete retrofit, add correct One Arm Drive Camber Tube Kit based off seat width</i>	1	\$3,103.14
1-4, 5e, 6, 7, 8b, 9b, 10-18, 20d, 21a, 22, 23a, 24b, 25	109606	Clik Blade One Arm Drive Retrofit Kit, 0° Camber, 22" Mag with Poly Coated Drive Handrim, 11.72" Drive Shaft <i>For a complete retrofit, add correct One Arm Drive Camber Tube Kit based off seat width</i>	1	\$3,103.14
1-4, 5e, 6, 7, 8b, 9b, 10-18, 20e, 21a, 22, 23a, 24b, 25	109607	Clik Blade One Arm Drive Retrofit Kit, 0° Camber, 22" Mag with Poly Coated Drive Handrim, 12.72" Drive Shaft <i>For a complete retrofit, add correct One Arm Drive Camber Tube Kit based off seat width</i>	1	\$3,103.14
1-4, 5e, 6, 7, 8b, 9b, 10-18, 20f, 21a, 22, 23a, 24b, 25	109608	Clik Blade One Arm Drive Retrofit Kit, 0° Camber, 22" Mag with Poly Coated Drive Handrim, 13.82" Drive Shaft <i>For a complete retrofit, add correct One Arm Drive Camber Tube Kit based off seat width</i>	1	\$3,103.14
1-4, 5e, 6, 7, 8b, 9b, 10-18, 20g, 21a, 22, 23a, 24b, 25	109609	Clik Blade One Arm Drive Retrofit Kit, 0° Camber, 22" Mag with Poly Coated Drive Handrim, 14.67" Drive Shaft <i>For a complete retrofit, add correct One Arm Drive Camber Tube Kit based off seat width</i>	1	\$3,103.14
	DCN0504	Instruction - Clik and Rogue Blade One Arm Drive Retrofit Installation	1	

Item Number	Part Number	Description	Quantity	Retail
1-4, 6, 7, 18, 21a, 22	108075	Blade One Arm Drive Axle Assembly	1	\$637.50
1-4, 6, 7, 18, 21b, 22	108079	Blade One Arm Drive Axle Assembly Short <i>Used if 11" wide or if 12" wide with rear wheel spacing of 1.25" or 13" wide with rear wheel spacing of .75"</i>	1	\$504.90
1	101459	1/2-20 NTE JAM NYL INS L/N BLK ZC	2	\$1.58
2	108082	1/2" Washer .030 Thick	6	\$1.02
3	104056	10-32 X 3/4" Socket Head Cap Screw	4	\$1.02
4	108083	Hub Handrim, One Arm Drive	1	\$81.46
5a	003200	One Arm Drive Handrim Aluminum 20"	1	\$262.65
5b	003199	One Arm Drive Handrim Aluminum 22"	1	\$262.65
5c	003198	One Arm Drive Handrim Aluminum 24"	1	\$262.65
5d	003203	One Arm Drive Handrim Poly Coated 20"	1	\$414.99
5e	003202	One Arm Drive Handrim Poly Coated 22"	1	\$414.99
5f	003201	One Arm Drive Handrim Poly Coated 24"	1	\$414.99
7	107564	One Arm Drive Spacer <i>Qty 1 always used on drive side. Qty 2 used with standard 5.03" axle (part number 107574)</i>	2	\$21.21
8a	101897	Handrim Aluminum Anodized 5 Rivet Nut 20"	1	\$68.29
8b	101898	Handrim Aluminum Anodized 5 Rivet Nut 22"	1	\$68.29
8c	100975	Handrim Aluminum Anodized 5 Rivet Nut 24"	1	\$57.78
9a	101961	Wheel X Core Mag 5-Spoke 20" Black	1	\$147.08
9b	101962	Wheel X Core Mag 5-Spoke 22" Black	1	\$141.83
9c	100960	Wheel X Core Mag 5-Spoke 24" Black	1	\$136.58
10	100657	M5 Nylock Nut Blk Zn	8	\$0.53
11	108074	One Arm Drive Rogue/Clik Axle Mount 0 Degree Camber PAIR	1	\$476.38
2, 10 - 14	110117	One Arm Drive Blade Axle Mount Assembly 0 Degree Camber with Hardware, Clik <i>This kit is for one axle mount with attaching hardware</i>	1	\$486.34
12	101734	M5 x 35 SHCS BLK ZC	4	\$1.05
13	100532	Tube End Plug 1 1/8"	2	\$2.63
14	101717	M5 x 25 SHCS BLK ZC	4	\$0.53

Item Number	Part Number	Description	Quantity	Retail
15	102619	M5 X 40 SHCS BLK ZC	4	\$1.05
16	003366	One Arm Drive Tower Clamp, Outboard Mount, Klik <i>Reference Klik One Arm Drive (Blade) - Drive Shaft Chart for configurations where used</i>	2	\$38.17
17	103056	M5 Cap Nut Black Zinc	4	\$2.10
19a	003369	One Arm Drive Camber Tube 11" Kit, Klik	1	\$176.47
19b	003370	One Arm Drive Camber Tube 12" Kit, Klik	1	\$176.47
19c	003371	One Arm Drive Camber Tube 13" Kit, Klik	1	\$176.47
19d	003372	One Arm Drive Camber Tube 14" Kit, Klik	1	\$176.47
19e	003373	One Arm Drive Camber Tube 15" Kit, Klik	1	\$176.47
19f	003374	One Arm Drive Camber Tube 16" Kit, Klik	1	\$176.47
19g	003708	One Arm Drive Camber Tube 17" Kit, Klik	1	\$176.47
19h	003709	One Arm Drive Camber Tube 18" Kit, Klik	1	\$176.47
20a	107562	One Arm Drive - Blade Drive Shaft 8.72"	1	\$562.82
20b	107563	One Arm Drive - Blade Drive Shaft 9.72"	1	\$562.82
20c	107032	One Arm Drive - Blade Drive Shaft 10.74"	1	\$562.82
20d	107565	One Arm Drive - Blade Drive Shaft 11.72"	1	\$562.82
20e	107566	One Arm Drive - Blade Drive Shaft 12.72"	1	\$562.82
20f	107567	One Arm Drive - Blade Drive Shaft 13.82"	1	\$562.82
20g	107568	One Arm Drive - Blade Drive Shaft 14.67"	1	\$562.82
21a	107574	One Arm Drive - Blade Style Axle 5.03"	1	\$92.09
21b	108073	One Arm Drive - Blade Style Axle 4.33" <i>Used if 11" wide or if 12" wide with rear wheel spacing of 1.25" or 13" wide with rear wheel spacing of .75"</i>	1	\$87.36
22	108085	Key, Blade One Arm Drive, 3/16" x 2"	1	\$16.29
23a, 24a, 25	505175	20" X Core Mag with One Arm Drive Hub	1	\$254.68
23a, 24b, 25	505176	22" X Core Mag with One Arm Drive Hub	1	\$254.68
23b, 24c, 25	003238	24" X Core Mag with One Arm Drive Hub	1	\$254.68
26	111822	Tower Clamp Mount, Klik <i>Reference Klik One Arm Drive (Blade) - Drive Shaft Chart for configurations where used</i>	2	\$17.16

Clik Blade OAD Drive Shaft Configurations Guide

Clik

Clik Seat Width	Wheel Spacing	Part No.	Compressed Drive Shaft Length	Extended Drive Shaft Length
11"	1.5	*#107562	7.12"	8.72"
11"	1.75	~*107562	7.12"	8.72"
12"	1.25	*107562	7.12"	8.72"
12"	1.5	107562	7.12"	8.72"
12"	1.75	~107562	7.12"	8.72"
13"	1, 1.25	^107562	7.12"	8.72"
13"	1.5	107563	8.12"	9.72"
13"	1.75	~107563	8.12"	9.72"
14"	1, 1.25	^107563	8.12"	9.72"
14"	1.5	107032	9.14"	10.74"
14"	1.75	~107032	9.14"	10.74"
15"	1, 1.25	^107032	9.14"	10.74"
15"	1.5	107565	10.12"	11.72"
15"	1.75	~107565	10.12"	11.72"
16"	1, 1.25	^107565	10.12"	11.72"
16"	1.5	107566	11.12"	12.72"
16"	1.75	~107566	11.12"	12.72"
17"	1, 1.25	^107566	11.12"	12.72"
17"	1.5	107567	12.22"	13.82"
17"	1.75	~107567	12.22"	13.82"
18"	1, 1.25	^107567	12.22"	13.82"
18"	1.5	107568	13.07"	14.67"
18"	1.75	~107568	13.07"	14.67"

*For this configuration, do not use spacer 107564 and replace axle 107574 with axle 108073.

~For this configuration, tower assemblies are to be mounted outboard of the frame.

#For this configuration, camber plugs require adjustment during drive shaft installation.

^1" wheel spacing not available with offset frame.

NOTE: Tower assemblies must be mounted outboard of the frame when offset frames are used.

Clik with T-Arms

Clik Seat Width	Wheel Spacing	Part No.	Compressed Drive Shaft Length	Extended Drive Shaft Length
11"	1.5	*107562	7.12"	8.72"
11"	1.75	*107562	7.12"	8.72"
12"	1.5	107562	7.12"	8.72"
12"	1.75	107562	7.12"	8.72"
13"	1.5	107563	8.12"	9.72"
13"	1.75	107563	8.12"	9.72"
14"	1.5	107032	9.14"	10.74"
14"	1.75	107032	9.14"	10.74"
15"	1.5	107565	10.12"	11.72"
15"	1.75	107565	10.12"	11.72"
16"	1.5	107566	11.12"	12.72"
16"	1.75	107566	11.12"	12.72"
17"	1.5	107567	12.22"	13.82"
17"	1.75	107567	12.22"	13.82"
18"	1.5	107568	13.07"	14.67"
18"	1.75	107568	13.07"	14.67"

*For this configuration, do not use spacer 107564 and replace axle 102908 with axle 108073.

Note: Tower assemblies are to be mounted outboard of the frame when T-Arms are used.