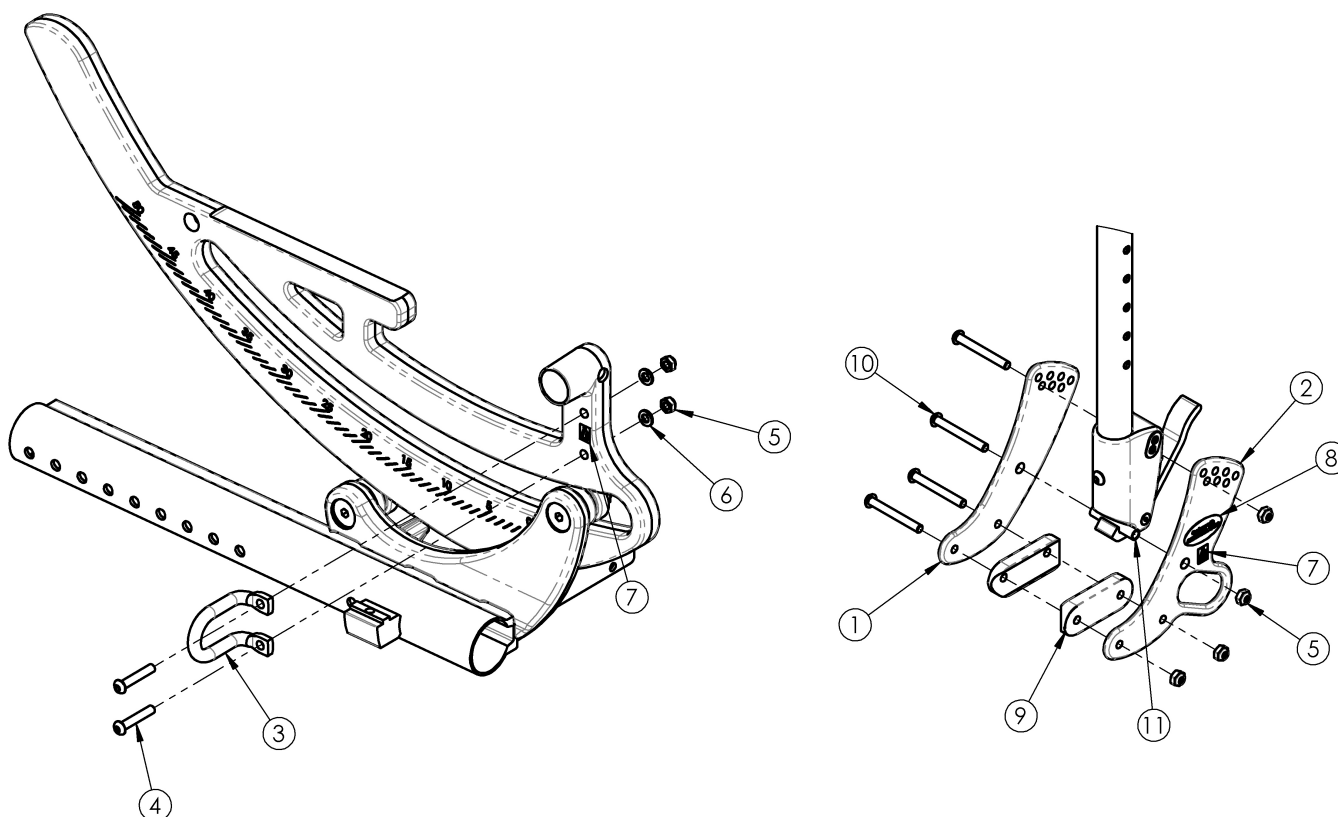


Focus CR Transit



Notice: Chair configuration review required prior to parts being quoted or ordered.

Item Number	Part Number	Description	Quantity	Retail
2a - 10	501096	Transit Retrofit Kit Focus <i>This kit is a complete retrofit, containing a pair of front transit brackets with attaching hardware and transit backplates.</i>	1	\$489.62
2b - 9	503318	Transit Retrofit Kit Reclining Back Focus <i>This kit is a complete retrofit, containing a pair of front transit brackets with attaching hardware and transit backplates.</i>	1	\$511.46
1, 2a, 5, 7-11	501095	Backrest Hardware Kit Transit Focus (PAIR)	1	\$473.45
3 - 7	115745	Rotary Frame Hardware Kit Transit Focus (PAIR) <i>This kit contains a pair of front transit brackets with attaching hardware</i>	1	\$101.51
1	001071	Back Plate Std TILT	2	\$89.01
2a	001421	Back Plate Transit Inner TILT	2	\$128.59
2b	001263	Back Plate, Recline, Transit Tilt	2	\$162.16

Item Number	Part Number	Description	Quantity	Retail
		<i>For full hardware used with the Reclining Backrest, please see the Focus CR Reclining Backrest page</i>		
4	101811	M6 x 35 BHCS Blk Zn	4	\$1.10
5	100658	M6 Nylock Nut Blk Zn	12	\$1.10
6	100746	M6 Flat Washer Blk Zn	4	\$1.66
9	002594	Saddle, Dual, 1" OD X 1.75 SP	4	\$3.21
10	101781	M6 x 50mm Partial Thread BHCS Blk ZC	8	\$1.66
11	002738	Spacer .313 OD x .243 ID x 1.68 long	2	\$4.12