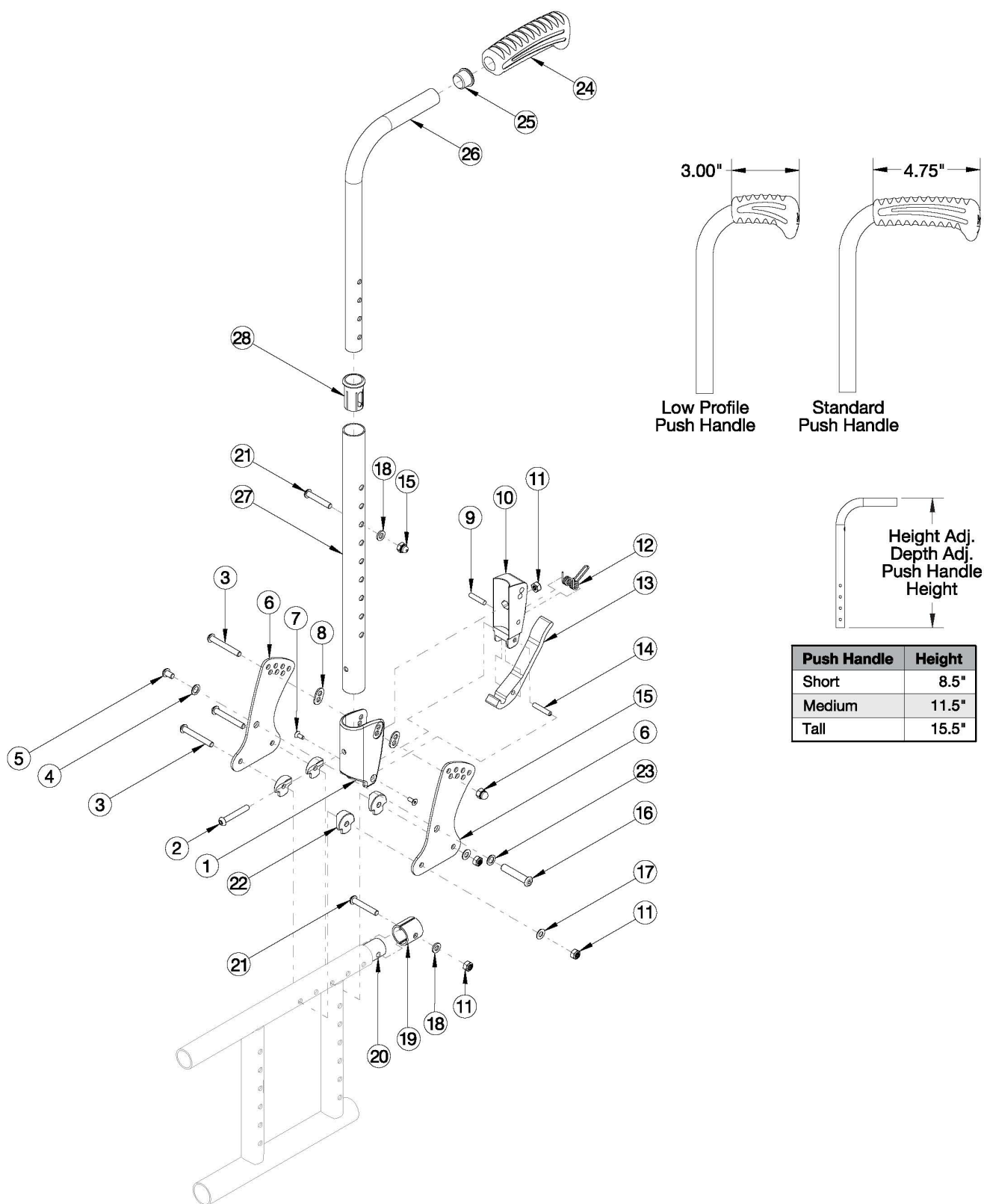


# Spark Height Adjustable Straight with Push Handle



*This backrest style was released February 8th, 2021*

Item Number	Part Number	Description	Quantity
1-23, 24a, 25, 26a, 27a, 28	112628	Height Adjustable Straight with Push Handle Assembly, Short, Standard Grip, Attaching Hardware for Seating Cross Braces, One Side	1
1-23, 24a, 25, 26a, 27a, 28	112629	Height Adjustable Straight with Push Handle Assembly, Short, Standard Grip, Attaching Hardware for Seating Cross Braces, PAIR	1
1-23, 24a, 25, 26b, 27b, 28	112630	Height Adjustable Straight with Push Handle Assembly, Medium, Standard Grip, Attaching Hardware for Seating Cross Braces, One Side	1
1-23, 24a, 25, 26b, 27b, 28	112631	Height Adjustable Straight with Push Handle Assembly, Medium, Standard Grip, Attaching Hardware for Seating Cross Braces, PAIR	1
1-23, 24a, 25, 26c, 27b, 28	112632	Height Adjustable Straight with Push Handle Assembly, Tall, Standard Grip, Attaching Hardware for Seating Cross Braces, One Side	1
1-23, 24a, 25, 26c, 27b, 28	112633	Height Adjustable Straight with Push Handle Assembly, Tall, Standard Grip, Attaching Hardware for Seating Cross Braces, PAIR	1
1-23, 24b, 25, 26a, 27a, 28	112634	Height Adjustable Straight with Push Handle Assembly, Short, Low Profile Grip, Attaching Hardware for Seating Cross Braces, One Side	1
1-23, 24b, 25, 26a, 27a, 28	112635	Height Adjustable Straight with Push Handle Assembly, Short, Low Profile Grip, Attaching Hardware for Seating Cross Braces, PAIR	1
1-23, 24b, 25, 26b, 27b, 28	112636	Height Adjustable Straight with Push Handle Assembly, Medium, Low Profile Grip, Attaching Hardware for Seating Cross Braces, One Side	1
1-23, 24b, 25, 26b, 27b, 28	112637	Height Adjustable Straight with Push Handle Assembly, Medium, Low Profile Grip, Attaching Hardware for Seating Cross Braces, PAIR	1
1-23, 24b, 25, 26c, 27b, 28	112638	Height Adjustable Straight with Push Handle Assembly, Tall, Low Profile Grip, Attaching Hardware for Seating Cross Braces, One Side	1
1-23, 24b, 25, 26c, 27b, 28	112639	Height Adjustable Straight with Push Handle Assembly, Tall, Low Profile Grip, Attaching Hardware for Seating Cross Braces, PAIR	1
15, 18, 21, 24a, 25, 26a, 27a, 28	112610	Height Adjustable Straight with Push Handle Assembly, Short, Standard Grip	1
15, 18, 21, 24a, 25, 26b, 27b, 28	112611	Height Adjustable Straight with Push Handle Assembly, Medium, Standard Grip	1
15, 18, 21, 24a, 25, 26c, 27b, 28	112612	Height Adjustable Straight with Push Handle Assembly, Tall, Standard Grip	1
15, 18, 21, 24b, 25, 26a, 27a, 28	112613	Height Adjustable Straight with Push Handle Assembly, Short, Low Profile Grip	1
15, 18, 21, 24b, 25, 26b, 27b, 28	112614	Height Adjustable Straight with Push Handle Assembly, Medium, Low Profile Grip	1
15, 18, 21, 24b, 25, 26c, 27b, 28	112615	Height Adjustable Straight with Push Handle Assembly, Tall, Low Profile Grip	1

Item Number	Part Number	Description	Quantity
24a, 25, 26a	501654	Depth Adjustable Height Adjustable Upper Push Handle Short Assembly w/ Standard Grip	1
24a, 25, 26b	501655	Depth Adjustable Height Adjustable Upper Push Handle Medium Assembly w/ Standard Grip	1
24a, 25, 26c	501656	Depth Adjustable Height Adjustable Upper Push Handle Tall Assembly w/ Standard Grip	1
24b, 25, 26a	002762	Depth Adjustable Height Adjustable Upper Push Handle Short Assembly w/ Low Profile Grip	1
24b, 25, 26b	002763	Depth Adjustable Height Adjustable Upper Push Handle Medium Assembly w/ Low Profile Grip	1
24b, 25, 26c	002764	Depth Adjustable Height Adjustable Upper Push Handle Tall Assembly w/ Low Profile Grip	1
1-19, 21, 22, 23	112605	Depth Adjustable Backrest Hardware Assembly, for Seating Cross Braces Left	1
1-19, 21, 22, 23	112606	Depth Adjustable Backrest Hardware Assembly, for Seating Cross Braces, PAIR	1
1, 8	503834	Cover Plate, Latch Insert Kit	1
2	100797	M6 x 40 BHCS BLK ZC	1
3	100670	M6 x 45 BTN SHCS BLK ZC	3
4	101701	Washer 3.315/.350 x .425/.525 x .059/.067 18-8 F/W	1
5	101184	M6 x 10 BTN SHCS BLKZC w/Patch	1
6	111833	Depth Adjustable Back Plate, Folding	2
7	101818	M4 x 10 FHCS BLKZC w/Patch	2
8	001897	Washer, Dual, PSA	2
9	102694	Dowel Pin, M5 X 24, Blk Zn	1
10	001895	Latch Insert, Folding Backrest	1
11	100658	M6 Nylock Nut Blk Zn	4
12	001896	Spring, Backrest Latch	1
13	001893	Latch Lever, Backrest	1
14	002513	Threaded Barrel, 5mm OD x M4	1
15	100558	M6 Nyl Ins Domed Cap L/N Zc	2
16	003284	Binding Post, 8mm x 40mm x M6	1
17	102803	Washer Flat .250 X .500 X .027 Hx Blz	2
18	100746	M6 Flat Washer Blk Zn	2
19	114443	Tube Spacer, Black, 1" OD x .083" x .80 LG <i>Replacement for part number 001230</i>	2

Item Number	Part Number	Description	Quantity
20	000605	Depth Adjustable Frame Extension Tube, Catalyst/Spark	1
21	101811	M6 x 35 BHCS Blk Zn	2
22	000612	1" Half Saddle Washer	4
23	101861	Nylon Washer 5/16 x 1/2 x .03	1
24a	109432	Ergo Push Handle Grip 3/4" Standard with Instruction	1
24b	109430	Ergo Push Handle Grip 3/4" Low Profile with Instruction	1
25	100638	Tube End Plug 3/4"	1
28	000034	Sleeve 3/4" x 1 1/2"	1