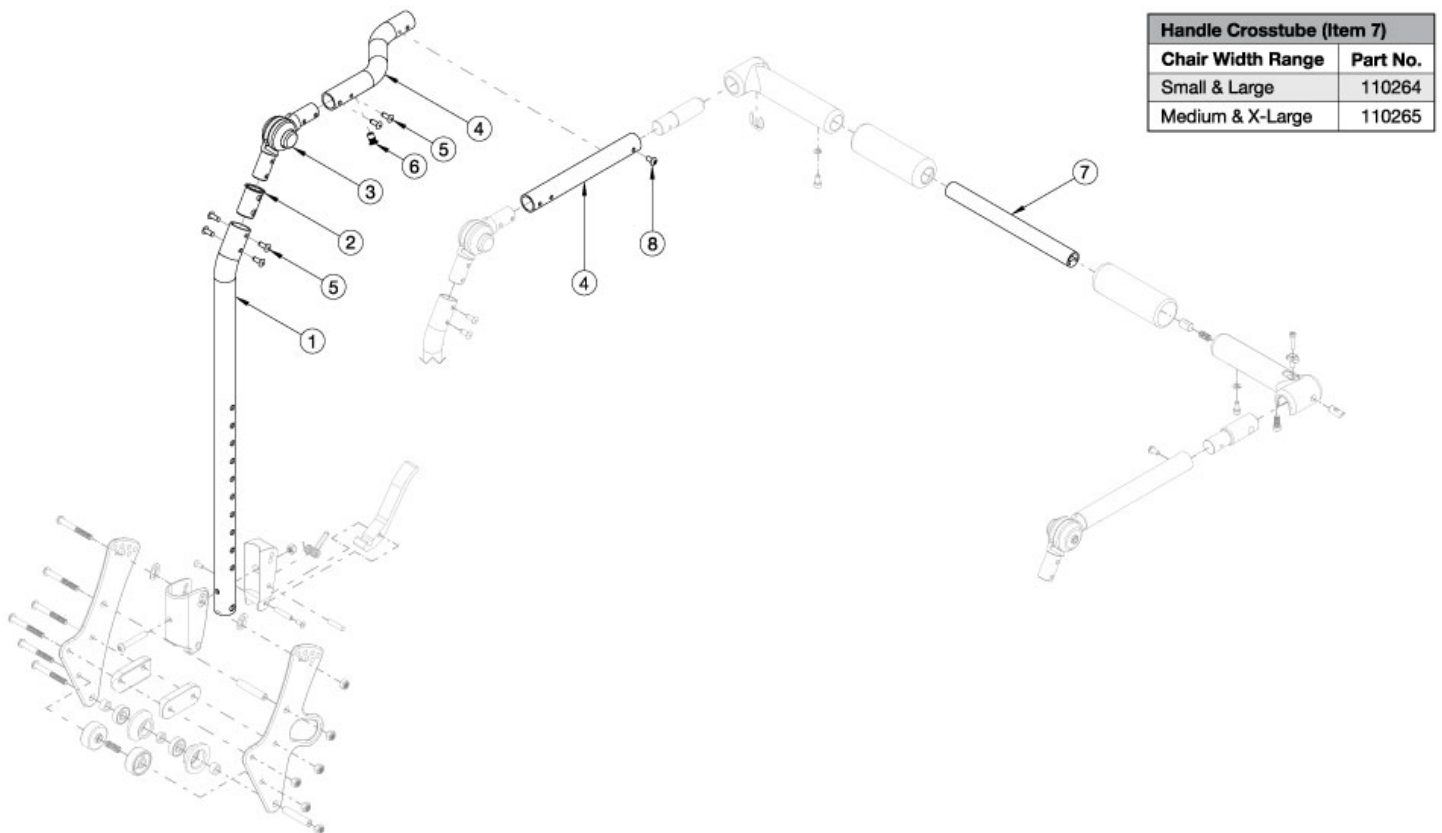


Arc Fixed Height with Folding Adjustable Handle Backrest - Growth



Callout #21: 10"-13" widths receive the curved tube and 14"-18" widths receive the straight shaped tube. When changing backrest types, check to see if new cables and tilt triggers are needed for both foot and hand tilts.

Item Number	Part Number	Description	Quantity
1a, 2, 3, 4a, 5, 6, 8	113929	Fixed Height Back Tube Assembly, Short, 10-13" Wide, Right, Arc	1
1a, 2, 3, 4b, 5, 6, 8	113930	Fixed Height Back Tube Assembly, Short, 10-13" Wide, Left, Arc	1
1a, 2, 3, 4c, 5, 6, 8	113933	Fixed Height Back Tube Assembly, Short, 14-18" Wide, Right, Arc	1
1a, 2, 3, 4d, 5, 6, 8	113934	Fixed Height Back Tube Assembly, Short, 14-18" Wide, Left, Arc	1
1b, 2, 3, 4a, 5, 6, 8	113931	Fixed Height Back Tube Assembly, Tall, 10-13" Wide, Right, Arc	1
1b, 2, 3, 4b, 5, 6, 8	113932	Fixed Height Back Tube Assembly, Tall, 10-13" Wide, Left, Arc	1
1b, 2, 3, 4c, 5, 6, 8	113935	Fixed Height Back Tube Assembly, Tall, 14-18" Wide, Right, Arc	1
1b, 2, 3, 4d, 5, 6, 8	113936	Fixed Height Back Tube Assembly, Tall, 14-18" Wide, Left, Arc	1
7a	110264	Cross Tube, Rigidizer Handle, 14-16 Wide	1

Item Number	Part Number	Description	Quantity
7b	110265	Cross Tube, Rigidizer Handle, 16-18 Wide	1