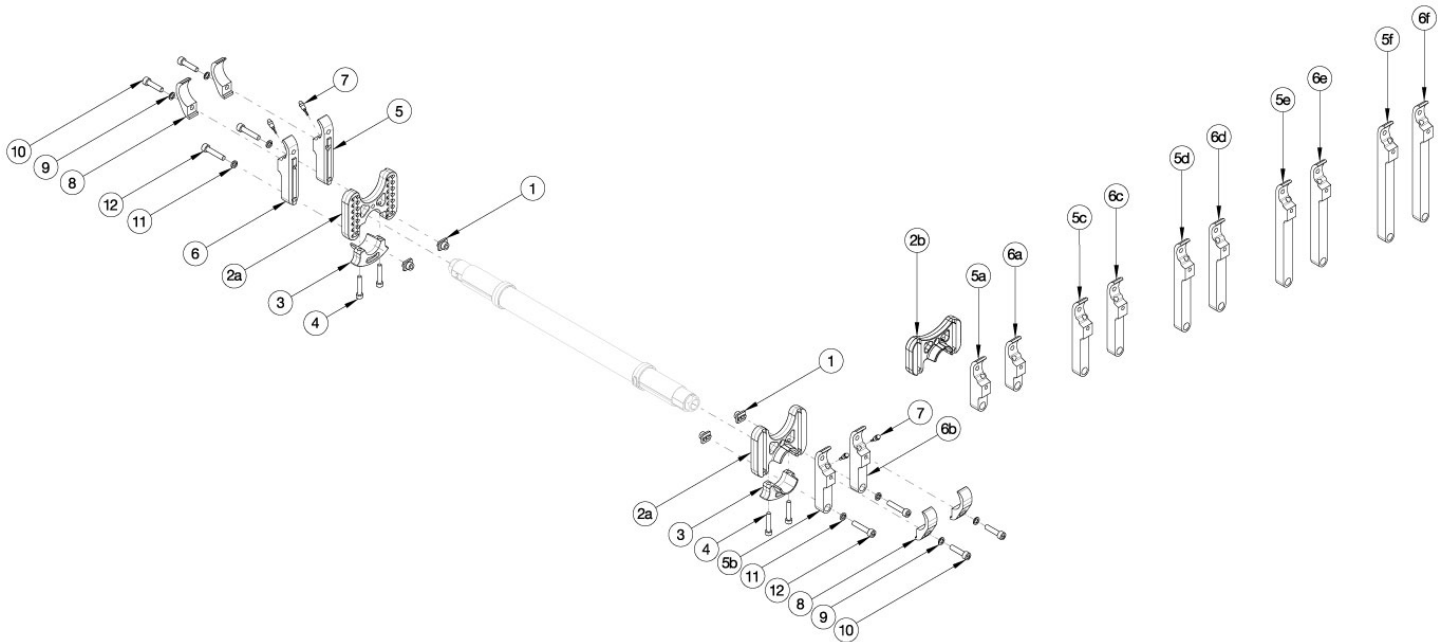


Rogue2 Standard Camber Mount



Please contact Customer Service if "Rear Inner Tower Clamps" or "Rear Tower Assemblies" are needed. If ordering "Rear Inner Tower Clamps", detent buttons (001788) are required. Used when center of gravity is between 0.5" and 5". If One Arm Drive is present, refer to the corresponding One Arm Drive parts manual page for the correct towers.

Item Number	Part Number	Description	Quantity
1, 2a, 3, 4, 8a-12	117500	Rear Tower Assembly Standard (114205), Black, Single, Rogue2	1
1, 2a, 3, 4, 8b-12	117500_ _ _	Rear Tower Assembly Standard (114205), Anodized/Color Accent, Single, Rogue2	1
1, 2a, 3, 4, 8a-12	117502	Rear Tower Assembly Standard (114205), Black, Pair, Rogue2	1
1, 2a, 3, 4, 8b-12	117502_ _ _	Rear Tower Assembly Standard (114205), Anodized/Color Accent, Pair, Rogue2	1
1, 2b, 3, 4, 8a-12	117501	Rear Tower Assembly Short (114011), Black, Single, Rogue2	1
1, 2b, 3, 4, 8b-12	117501_ _ _	Rear Tower Assembly Short (114011), Anodized/Color Accent, Single, Rogue2	1
1, 2b, 3, 4, 8a-12	117503	Rear Tower Assembly Short (114011), Black, Pair, Rogue2	1
1, 2b, 3, 4, 8b-12	117503_ _ _	Rear Tower Assembly Short (114011), Anodized/Color Accent, Pair, Rogue2	1
1	114014	Rear Tower Square Nut	2
4	114015	SHCS, M5X0.8X30, Cls12.9, Blz, DIN 912	2
5a	114004	Rear Tower Inner Index Clamp 2.125", Black, Right	2
5a	114004_ _ _	Rear Tower Inner Index Clamp 2.125", Anodized/Color Accent, Right	2

Item Number	Part Number	Description	Quantity
5b	114005	Rear Tower Inner Index Clamp 2.875", Black, Right	2
5b	114005_ _ _	Rear Tower Inner Index Clamp 2.875", Anodized/Color Accent, Right	2
5c	114006	Rear Tower Inner Index Clamp 3.625, Black, Right	2
5c	114006_ _ _	Rear Tower Inner Index Clamp 3.625, Anodized/Color Accent, Right	2
5d	114007	Rear Tower Inner Index Clamp 4.500", Black, Right	2
5d	114007_ _ _	Rear Tower Inner Index Clamp 4.500", Anodized/Color Accent, Right	2
5e	114008	Rear Tower Inner Index Clamp 5.375", Black, Right	2
5e	114008_ _ _	Rear Tower Inner Index Clamp 5.375", Anodized/Color Accent, Right	2
5f	114009	Rear Tower Inner Index Clamp 6.250", Black, Right	2
5f	114009_ _ _	Rear Tower Inner Index Clamp 6.250", Anodized/Color Accent, Right	2
6a	114034	Rear Tower Inner Index Clamp 2.125", Black, Left	2
6a	114034_ _ _	Rear Tower Inner Index Clamp 2.125", Anodized/Color Accent, Left	2
6b	114035	Rear Tower Inner Index Clamp 2.875", Black, Left	2
6b	114035_ _ _	Rear Tower Inner Index Clamp 2.875", Anodized/Color Accent, Left	2
6c	114036	Rear Tower Inner Index Clamp 3.625, Black, Left	2
6c	114036_ _ _	Rear Tower Inner Index Clamp 3.625, Anodized/Color Accent, Left	2
6d	114037	Rear Tower Inner Index Clamp 4.500", Black, Left	2
6d	114037_ _ _	Rear Tower Inner Index Clamp 4.500", Anodized/Color Accent, Left	2
6e	114038	Rear Tower Inner Index Clamp 5.375", Black, Left	2
6e	114038_ _ _	Rear Tower Inner Index Clamp 5.375", Anodized/Color Accent, Left	2
6f	114039	Rear Tower Inner Index Clamp 6.250", Black, Left	2
6f	114039_ _ _	Rear Tower Inner Index Clamp 6.250", Anodized/Color Accent, Left	2
7	001788	Button Assembly	2
8a	114003	Rear Tower Outer Clamp, Black	4
8b	114003_ _ _	Rear Tower Outer Clamp, Anodized//Color Accent	4
9	102326	Flat Washer ID .254" x OD .396" Thickness .047" Zinc	2
10	100780	M6 x 25 SHCS ZC	2

Item Number	Part Number	Description	Quantity
11	102810	M6 Lockwasher, Hi-Collar, ZC	2
12	102627	M6 X 30 SHCS BLK ZC	2