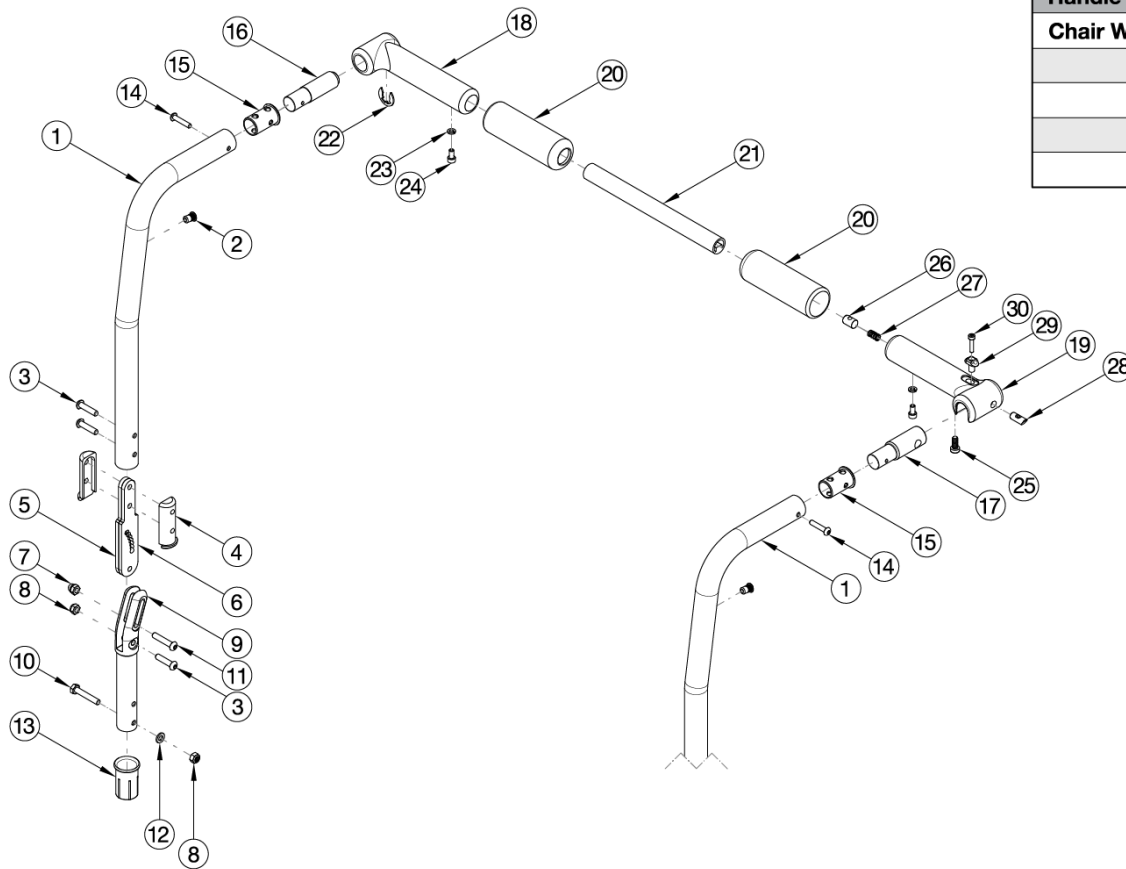


# Catalyst E Backrest - Angle Adjustable with Folding Rigidizer Bar



Handle Crosstube (Item 21)	
Chair Width Range	Part No.
14" - 16"	110264
16" - 18"	110265
18" - 20"	110266
20" - 22"	110267

Item Number	Part Number	Description	Quantity
3	101593	M6 x 25 BTN SHCS BLKZC	1
4	111959	Angle Adjustable Backrest Angle Plate Sleeve	1
5	111958	Angle Adjustable Backrest Plate	1
6	112984	Angle Adjustable Backrest Angle Plate Threaded	1
7	100558	M6 Nyl Ins Domed Cap L/N Zc	1
8	100658	M6 Nylock Nut Blk Zn	1
9	111960	Angle Adjustable Backrest Pivot Weldment	1
10	100860	M6 X 35 Hhcs P/Thd Zc	1
11	102625	M6 X 30 BHCS BLK ZC	1
12	100746	M6 Flat Washer Blk Zn	1

Item Number	Part Number	Description	Quantity
13	111965	Frame Sleeve, Angle Adjustable Backrest	1
14	102616	M5 X 25 BHCS BLK ZC	1
15	001266	Bushing .832 OD x .720 ID	1
16	110258	Adapter, Pivot, Rigidizer Handle	1
17	110259	Adapter, Latch, Rigidizer Handle	1
18	110260	Pivot, Rigidizer Handle	1
19	110261	Latch, Rigidizer Handle	1
21	110264	Cross Tube, Rigidizer Handle, 14-16 Wide	1
22	110291	E-RING, M13-M18, DIN6799, ZC	1
23	102614	M5 Split Lock Washer BLK ZC	1
24	101766	M5 X 10 Cls12.9 Din912 Shcs Pln	1
25	101185	M6 x 14 CLS8.8 DIN7984 Low SHCS BLKZC	1
26	102768	M6 Barrel Nut	1
28	110263	Pin, Latch, Rigidizer Handle	1
29	110262	Button, Latch, Rigidizer Handle	1
30	110290	SHCS, M4 x 0.7 x 18, CLS12.9, BLZ, NYL, DIN912	1