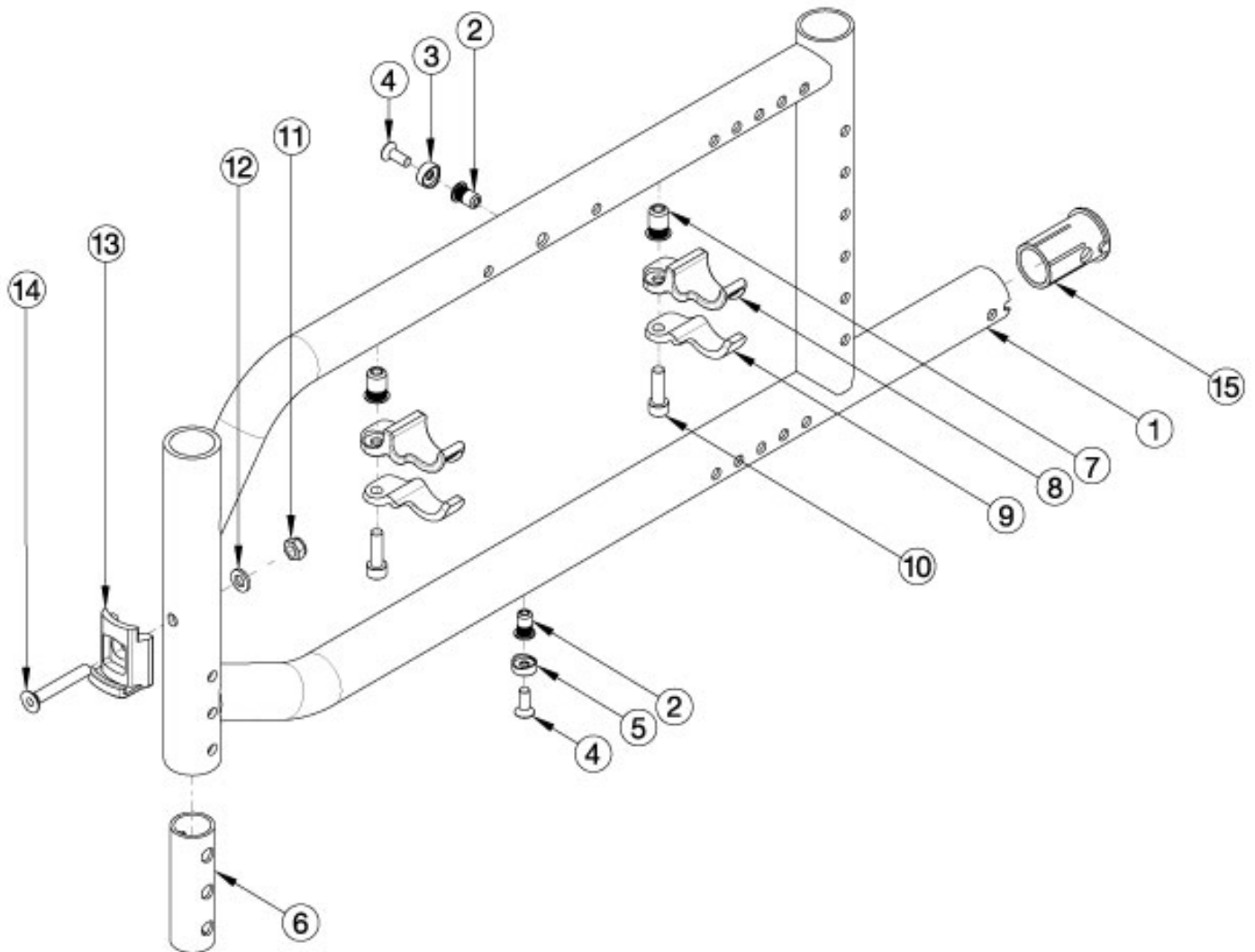


# Catalyst E Side Frame Assembly



Frame assemblies are based on Seat Depth. If switching to new Seat Depth, new Height Adjustable T-Arms or Height Adjustable Flip Back T-Arms may be needed.

Item Number	Part Number	Description	Quantity
1a, 2, 6, 7	115925_ _ _	Frame Assembly, Left, 15/16, Catalyst E	1
1b, 2, 6, 7	115926_ _ _	Frame Assembly, Left, 17/18, Catalyst E	1
1c, 2, 6, 7	115927_ _ _	Frame Assembly, Left, 19/20, Catalyst E	1
1a, 2, 6, 7	115928_ _ _	Frame Assembly, Right, 15/16, Catalyst E	1
1b, 2, 6, 7	115929_ _ _	Frame Assembly, Right, 17/18, Catalyst E	1
1c, 2, 6, 7	115930_ _ _	Frame Assembly, Right, 19/20, Catalyst E	1

Item Number	Part Number	Description	Quantity
3-5, 8-12	115924	Seat Hook and Support Hardware Kit, Catalyst E <i>For 1 side</i>	1
3	111940	Cross Brace Top Clamp Retainer Saddle, Catalyst E	1
4	102937	M5 X 14 FHCS, Blk Zn	2
5	111941	Cross Brace Bottom Clamp Retainer Saddle, Catalyst E	1
6	111942	Front Frame Insert, Catalyst E	1
7	100661	M6 X 1.0 Rivnut	1
8	111937	Seat Hook	1
9	111938	Seat Hook Support, Steel	1
10	101180	M6 x 20 SHCS BLK ZC	1
11	100658	M6 Nylock Nut Blk Zn	1
12	100746	M6 Flat Washer Blk Zn	1
13	000336	Latch Block	1
14	101819	M6 x 40 FHCS Blk Zn	1
15	111943	Anti-Tip Sleeve, Catalyst E	1

Matte Finish	
Code	Color Name
CGM	Charcoal Gray
EGM	Emerald Green
GGM	Graphite Gray*
IBM	Iridescent Burgundy
INM	Iridescent Navy
AGM	Military Green**
RRM	Retro Red
RBM	Royal Blue
SBM	Shadow Black
SWM	Smooth White

\* Discontinued Color

\*\* Formerly called Army Green

Gloss Finish	
Code	Color Name
BLK	Black
BLU	Blue
SKY	Blue Skies
BRO	Bright Orange*
PNK	Bubblegum Pink
BUR	Burgundy*
CBL	Candy Blue
PUR	Candy Purple
RED	Candy Red
COP	Copper
DPR	Deep Purple*
EBL	Electric Blue*
GRN	Forest Green*
FUS	Fuchsia*
GSM	Granny Smith
MTF	Metallic Fuchsia*
MOR	Metallic Orange
ORG	Orange*
BRD	Red
SAP	Sapphire*
SIL	Silver
TEA	Teal
YLW	Yellow
FLM	Graphic Image Transfer