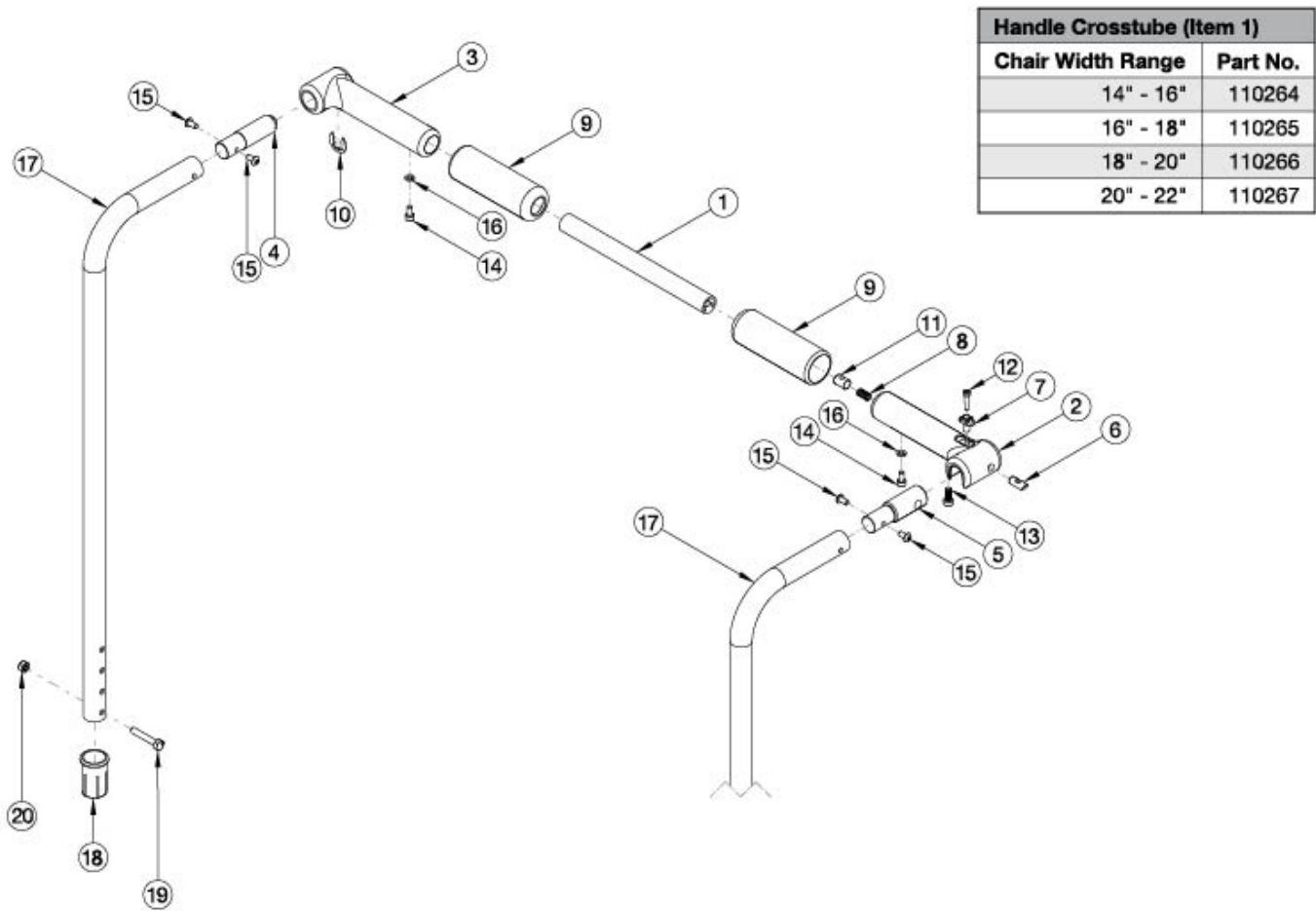


Catalyst Backrest - Straight Push Handle with Rigidizer Bar



Handle Crosstube (Item 1)	
Chair Width Range	Part No.
14" - 16"	110264
16" - 18"	110265
18" - 20"	110266
20" - 22"	110267

If Anti-Rollback is present, see Back Tubes for Anti-Rollback System

Item Number	Part Number	Description	Quantity
1a, 2-16, 17a	116400	Straight Backtube, Folding Handle, Short, 14"-16"W, CAT	1
1b, 2-16, 17a	116401	Straight Backtube, Folding Handle, Short, 16"-18"W, CAT	1
1c, 2-16, 17a	116402	Straight Backtube, Folding Handle, Short, 18"-20"W, CAT	1
1d, 2-16, 17a	116403	Straight Backtube, Folding Handle, Short, 20"-22"W, CAT	1
1a, 2-16, 17b	116404	Straight Backtube, Folding Handle, Medium, 14"-16"W, CAT	1
1b, 2-16, 17b	116405	Straight Backtube, Folding Handle, Medium, 16"-18"W, CAT	1
1c, 2-16, 17b	116406	Straight Backtube, Folding Handle, Medium, 18"-20"W, CAT	1
1d, 2-16, 17b	116407	Straight Backtube, Folding Handle, Medium, 20"-22"W, CAT	1

Item Number	Part Number	Description	Quantity
1a, 2-16, 17c	116408	Straight Backtube, Folding Handle, Tall, 14"-16"W, CAT	1
1b, 2-16, 17c	116409	Straight Backtube, Folding Handle, Tall, 16"-18"W, CAT	1
1c, 2-16, 17c	116410	Straight Backtube, Folding Handle, Tall, 18"-20"W, CAT	1
1d, 2-16, 17c	116411	Straight Backtube, Folding Handle, Tall, 20"-22"W, CAT	1
1a, 2-16	116416	Folding Handle, 14"-16"W, CAT	1
1b, 2-16	116417	Folding Handle, 16"-18"W, CAT	1
1c, 2-16	116418	Folding Handle, 18"-20"W, CAT	1
1d, 2-16	116419	Folding Handle, 20"-22"W, CAT	1
1a	110264	Cross Tube, Rigidizer Handle, 14-16 Wide	1
1b	110265	Cross Tube, Rigidizer Handle, 16-18 Wide	1
1c	110266	Cross Tube, Rigidizer Handle, 18-20 Wide	1
1d	110267	Cross Tube, Rigidizer Handle, 20-22 Wide <i>Replaces 116463.</i>	1
2	110261	Latch, Rigidizer Handle	1
3	110260	Pivot, Rigidizer Handle	1
4	110258	Adapter, Pivot, Rigidizer Handle	1
5	110259	Adapter, Latch, Rigidizer Handle	1
6	110263	Pin, Latch, Rigidizer Handle	1
7	110262	Button, Latch, Rigidizer Handle	1
10	110291	E-RING, M13-M18, DIN6799, ZC	1
11	102768	M6 Barrel Nut	1
12	110290	SHCS, M4 x 0.7 x 18, CLS12.9, BLZ, NYL, DIN912	1
13	101185	M6 x 14 CLS8.8 DIN7984 Low SHCS BLKZC	1
14	101766	M5 X 10 Cls12.9 Din912 Shcs Pln	1
15	100669	M5 x 10 BTN SHCS BLKZC w/Patch	1
16	102614	M5 Split Lock Washer BLK ZC	1
17a	116158	Straight Backtube Push Handle, Short, Rigidizer	1
17b	116159	Straight Backtube Push Handle, Rigidizer, Medium	1

Item Number	Part Number	Description	Quantity
17c	116160	Straight Backtube Push Handle, Tall, Rigidizer	1
18	111965	Frame Sleeve, Angle Adjustable Backrest	1
19	100860	M6 X 35 Hhcs P/Thd Zc	1
20	100658	M6 Nylock Nut Blk Zn	1