



CAUTION:

Proper installation is critical to the performance of your handrims. Failure to follow these instructions will void the product warranty.

1 Tools



Tools Needed

- Phillips head screwdriver
- 3/8" wrench
- Air pump
- Tire irons (tools to remove the tire) - if necessary
- Pliers - if necessary

2 Wheel



Remove the Wheel

- Remove wheel with old handrim from wheelchair.
- Remove from the wheel both the tire and the tape or rubber band that covers spoke holes from wheel (tire changing tools are recommended if you have them).

3 Old Handrim



Remove the Old Handrim

- Using a phillips screwdriver and a 3/8" wrench, disassemble and remove the (6) screws and lock nuts that mount the handrim to the wheel.

4 The Natural-Fit

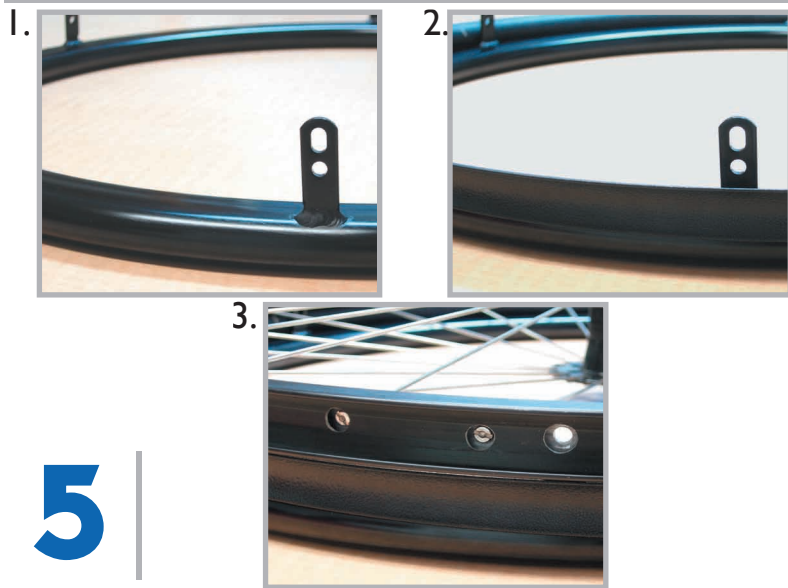


Check Fit of Oval

- Check to see if the tabs of the new oval component will fit inside the rim of the wheel. If not (i.e. either too wide or narrow), you will need to evenly adjust all the tabs by slightly bending them (using pliers) so they fit just inside the rim of the wheel.

NOTE: IT IS IMPORTANT TO EVENLY BEND THE TABS SO THE OVAL HANDRIM WILL MOUNT SYMMETRICALLY TO THE WHEEL.





5 | Natural-Fit Assembly

Set-up the Natural-Fit Assembly

1. Once the tabs are adjusted properly, place the new oval handrim on a flat surface with the tabs facing up.
2. Place the new concave shaped thumb guard around the tabs and on top of the oval component (the wider edge faces up to make contact with your wheel).
3. Place your wheel (recessed hole for quick release facing down) on top of the thumb guard and oval component. Make sure the holes on the tabs match up with the holes in the wheel.



6 | Insert Screws

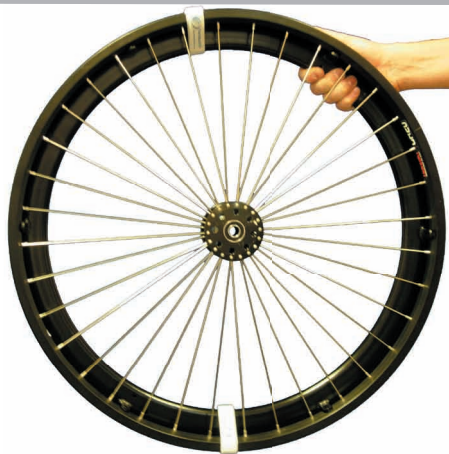
Attach the Natural-Fit

- Insert the (6) screws through the wheel and into the tab slots in the oval handrim. After you insert each screw, slightly thread the lock nut onto the screw.

NOTE: DO NOT TIGHTEN THE SCREWS. LEAVE THEM LOOSE SO YOU CAN ADJUST THE THUMB GUARD AS DESCRIBED IN THE FOLLOWING STEPS.



7 | Straps



Center and Secure

- With the screws loose on the wheel, position the Velcro straps at opposite ends of your wheel.
- Tighten the assembly together by cinching the (2) Velcro straps so the thumb guard is secure.

NOTE: THE THUMB GUARD SHOULD NOT SPIN WHEN YOU PUSH ON IT AND SHOULD BE CENTERED ON THE WHEEL. IF THE THUMB GUARD BECOMES TILTED TO ONE SIDE, LOOSEN THE STRAPS AND READJUST THE THUMB GUARD.



8 | Finish up



Last Step: Reassemble your Wheel

- Secure the Natural-Fit Assembly by tightening the (6) lock nuts.
- Reinstall the spoke tape (or rubber band), inner tube, tire, and inflate to the correct pressure.

Congratulations!

Your new Natural-Fit Handrim is ready to use!