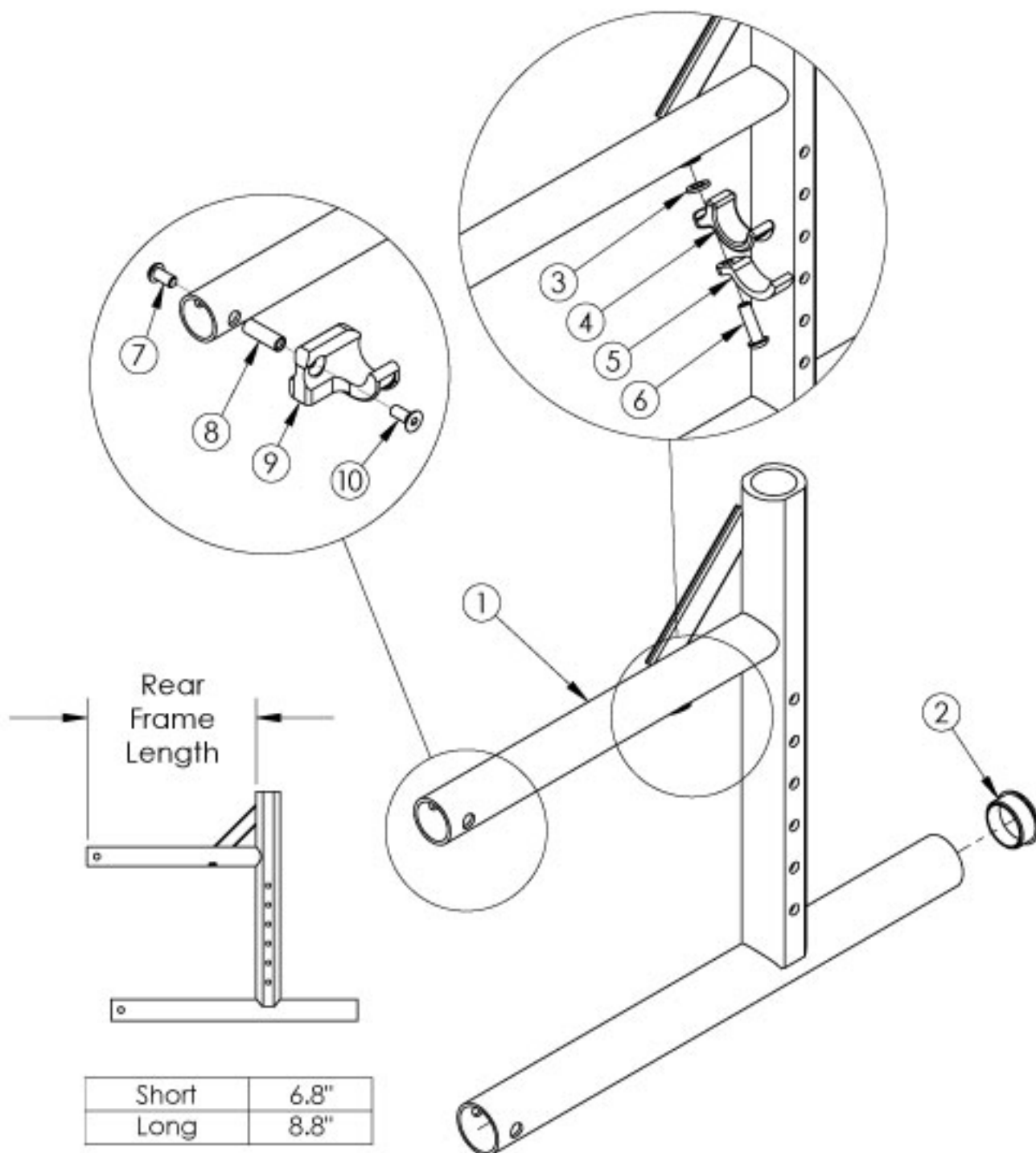


Catalyst 4 Rear Frame



If chair has any type of direct mounted side guards, select frame assembly with Side Guard Modification. Use the short frame for 14-17" Seat Depths. Use the long frame for 18-20" Seat Depths. If switching to a new Seat Depth, new Height Adjustable Flip Back T-Arms may be needed.

| Item Number | Part Number | Description | Quantity |
|--------------|-------------|--|----------|
| 3, 4, 5, 6a | 501005 | Seat Hook and Support Hardware Kit, Standard, Catalyst <i>Used with Standard Weight Capacity. This kit contains quantity of 1 each</i> | 1 |
| 3, 4, 5, 6b | 114528 | Seat Hook and Support Hardware Kit, Standard, for Heavy Duty Catalyst <i>Used with Heavy Duty / 350 lbs Weight Capacity. This kit contains quantity of 1 each</i> | 1 |
| 7, 8, 9a, 10 | 111569 | Seat Hook and Support Hardware Kit Seating System Right Front Frame / Left Rear Frame Catalyst <i>This kit contains quantity of 1 each</i> | 1 |
| 7, 8, 9b, 10 | 111570 | Seat Hook and Support Hardware Kit, Seating System Left Front Frame / Right Rear Frame Catalyst <i>This kit contains quantity of 1 each</i> | 1 |
| 1a, 2 | 100184_ _ _ | Frame Assm Cat 4 Rear Left Short _ _ _ | 1 |
| 1c, 2 | 100182_ _ _ | Frame Assm Cat 4 Rear Right Short _ _ _ | 1 |
| 1b, 2 | 100185_ _ _ | Frame Assm Cat 4 Rear Left Long _ _ _ | 1 |
| 1d, 2 | 100183_ _ _ | Frame Assm Cat 4 Rear Right Long _ _ _ | 1 |
| 1a, 2 | 114404_ _ _ | Frame Assm Cat 4 Rear with Side Guard Mount Modification Left Short _ _ _ | 1 |
| 1c, 2 | 114402_ _ _ | Frame Assm Cat 4 Rear with Side Guard Mount Modification Right Short _ _ _ | 1 |
| 1b, 2 | 114405_ _ _ | Frame Assm Cat 4 Rear with Side Guard Mount Modification Left Long _ _ _ | 1 |
| 1d, 2 | 114403_ _ _ | Frame Assm Cat 4 Rear with Side Guard Mount Modification Right Long _ _ _ | 1 |
| 2 | 100532 | Tube End Plug 1 1/8" | 1 |
| 3 | 100831 | 1/2" Washer OD .040" Thick | 1 |
| 4 | 000003 | Seat Hook, Catalyst | 1 |
| 5 | 000004 | Seat Hook Support, Catalyst | 1 |
| 6a | 100668 | M6 x 20 CLS10.9 BTN SHCS ZC w/Patch <i>Used with Standard Weight Capacity</i> | 1 |
| 6b | 122970 | M6 x 1.0 x 20, CLS 10.9, BLZ, SHCS w/Patch <i>Used with Heavy Duty / 350 lbs Weight Capacity</i> | 1 |
| 7 | 100667 | M6 x 12 BTN SHCS BLKZC w/Patch | 1 |
| 8 | 000065 | M6 x 23.68 Threaded Barrel | 1 |
| 9a | 000960R | Seat Hook Open Frame Right Front Frame / Left Rear Frame, Catalyst | 1 |
| 9b | 000960L | Seat Hook Open Frame Left Front Frame / Right Rear Frame, Catalyst | 1 |
| 10 | 101594 | M6 x 14 CLS10.9 DIN7991 FSHCS BLKZC w/Patch | 1 |

| Matte Finish | |
|--------------|---------------------|
| Code | Color Name |
| CGM | Charcoal Gray |
| EGM | Emerald Green |
| GGM | Graphite Gray* |
| IBM | Iridescent Burgundy |
| INM | Iridescent Navy |
| AGM | Military Green** |
| RRM | Retro Red |
| RBM | Royal Blue |
| SBM | Shadow Black |
| SWM | Smooth White |

* Discontinued Color

** Formerly called Army Green

| Gloss Finish | |
|--------------|------------------------|
| Code | Color Name |
| BLK | Black |
| BLU | Blue |
| SKY | Blue Skies |
| BRO | Bright Orange* |
| PNK | Bubblegum Pink |
| BUR | Burgundy* |
| CBL | Candy Blue |
| PUR | Candy Purple |
| RED | Candy Red |
| COP | Copper |
| DPR | Deep Purple* |
| EBL | Electric Blue* |
| GRN | Forest Green* |
| FUS | Fuchsia* |
| GSM | Granny Smith |
| MTF | Metallic Fuchsia* |
| MOR | Metallic Orange |
| ORG | Orange* |
| SAP | Sapphire* |
| SIL | Silver |
| TEA | Teal |
| YLW | Yellow |
| FLM | Graphic Image Transfer |