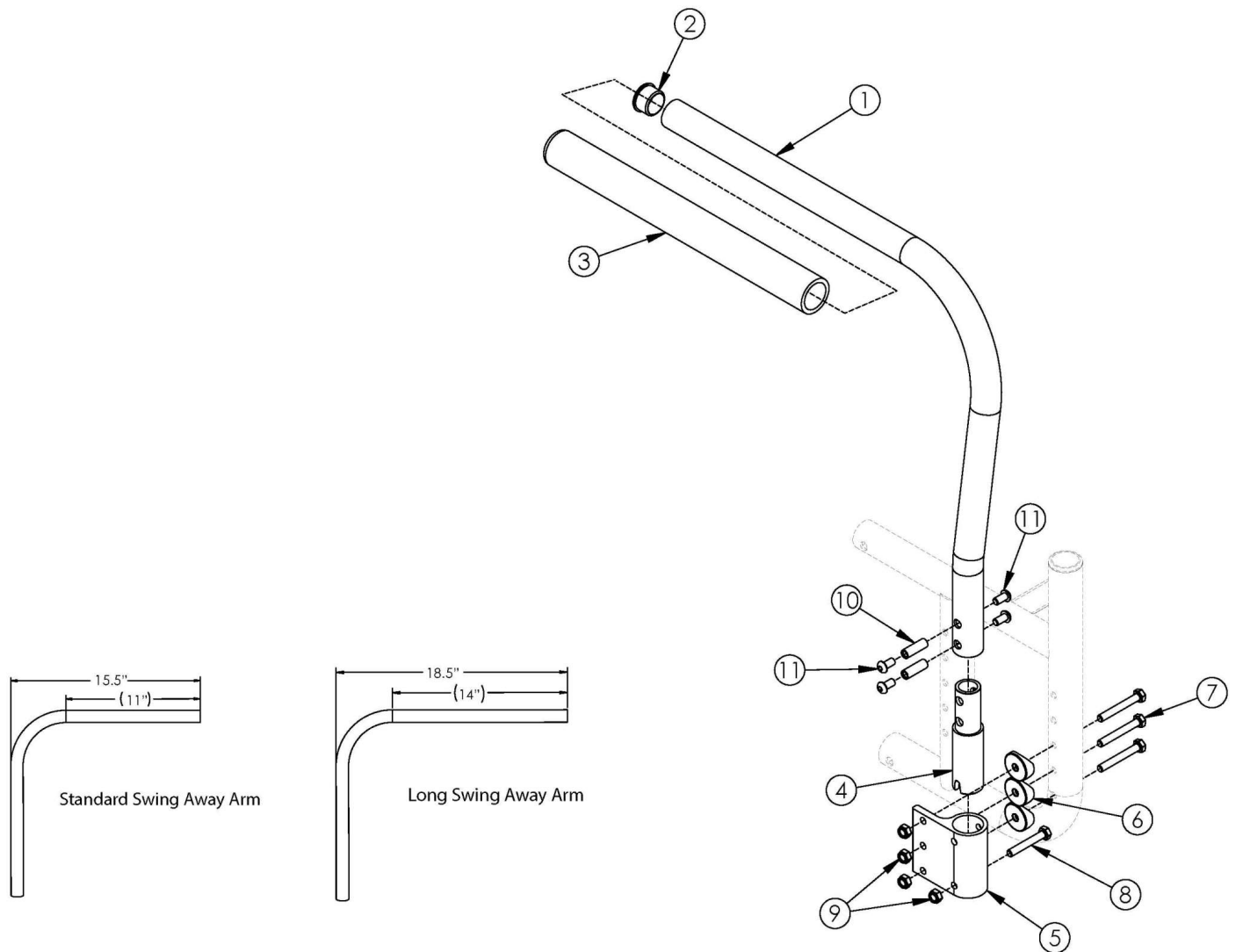


# Catalyst E Armrests - Swing Away



*If retrofitting, Receivers are needed.*

Item Number	Part Number	Description	Quantity
1a, 2-4, 10, 11	500500	Tubular Swing Away Armrest Assembly Left CAT	1
1b, 2-4, 10, 11	500501	Tubular Swing Away Armrest Assembly Right CAT	1
1a, 1b, 2-4, 10, 11	500588	Tubular Swing Away Armrest Assembly Pair CAT	1
1c, 2-4, 10, 11	501480	Tubular Long Swing Away Armrest Assembly Left CAT	1
1d, 2-4, 10, 11	501481	Tubular Long Swing Away Armrest Assembly Right CAT	1
1c, 1d, 2-4, 10, 11	501482	Tubular Long Swing Away Armrest Assembly Pair CAT	1
5, 6, 7, 8, 9	502283	Tubular Swing Away Armrest Receiver Kit CAT	1

Item Number	Part Number	Description	Quantity
1a, 2-11	502284	Tubular Swing Away Armrest w/ Receiver Kit Left CAT	1
1b, 2-11	502285	Tubular Swing Away Armrest w/ Receiver Kit Right CAT	1
1a, 1b, 2-11	502286	Tubular Swing Away Armrest w/ Receiver Kit PAIR CAT	1
1c, 2-11	502287	Tubular Long Swing Away Armrest w/ Receiver Kit Left CAT	1
1d, 2-11	502288	Tubular Long Swing Away Armrest w/ Receiver Kit Right CAT	1
1c, 1d, 2-11	502289	Tubular Long Swing Away Armrest w/ Receiver Kit PAIR CAT	1
2	100804	Tube End Plug 1"	1
4	000267	Armrest Swing Away Lower CAT	1
5	000044	Armrest Swing Away Receiver Cat	1
6	000056	Saddle 1 1/8"	3
7	100674	M6 x 45 CLS10.9 DIN931 HHCS ZC	3
8	100681	M6 x 40 CLS8.8 DIN931 HHCS ZC	1
9	100658	M6 Nylock Nut Blk Zn	4
10	000065	M6 x 23.68 Threaded Barrel	2
11	100667	M6 x 12 BTN SHCS BLKZC w/Patch	4