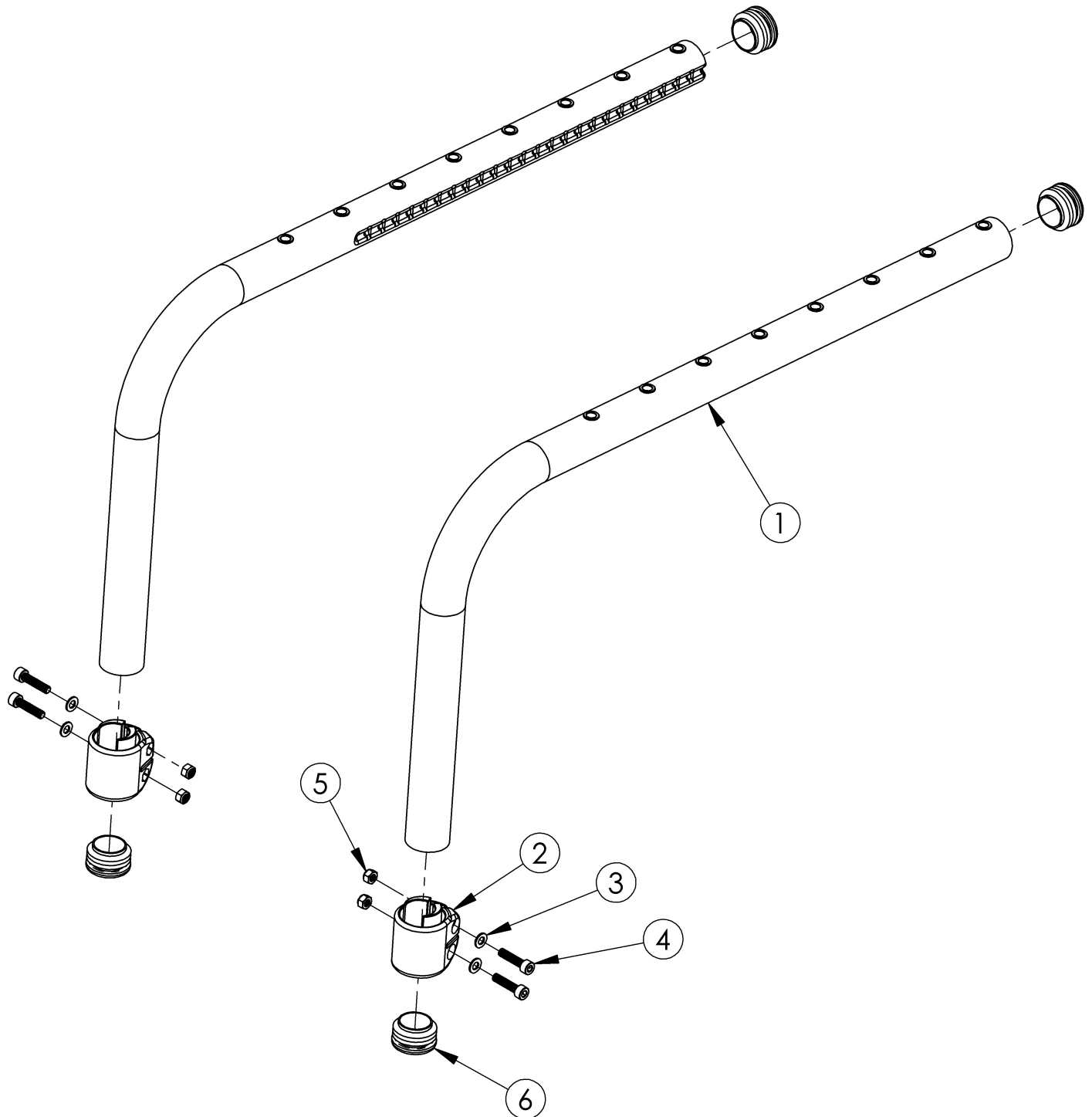


# Discontinued Klik Side Frame



*This Klik Side Frame is discontinued and was used on serial numbers prior to CLK005270. Item numbers 2-5 are only needed when footrest is not high mounted.*

Item Number	Part Number	Description	Quantity
2a	001817	Footrest Clamp Right LW	1

Item Number	Part Number	Description	Quantity
2b	002395	Footrest Clamp Left LW	1
3	101856	Flat Washer, M5, Blk Zn	4
4	101843	M5 x 20 SHCS Blk Zn	4
5	100657	M5 Nylock Nut Blk Zn	4
2-5	506823	Frame Inserted Footrest Hardware Kit for Discontinued Frame, Clik (PAIR)	1
6	002791	Seat Tube End Cap <i>Use quantity 4 with high-mounted footrests</i>	2