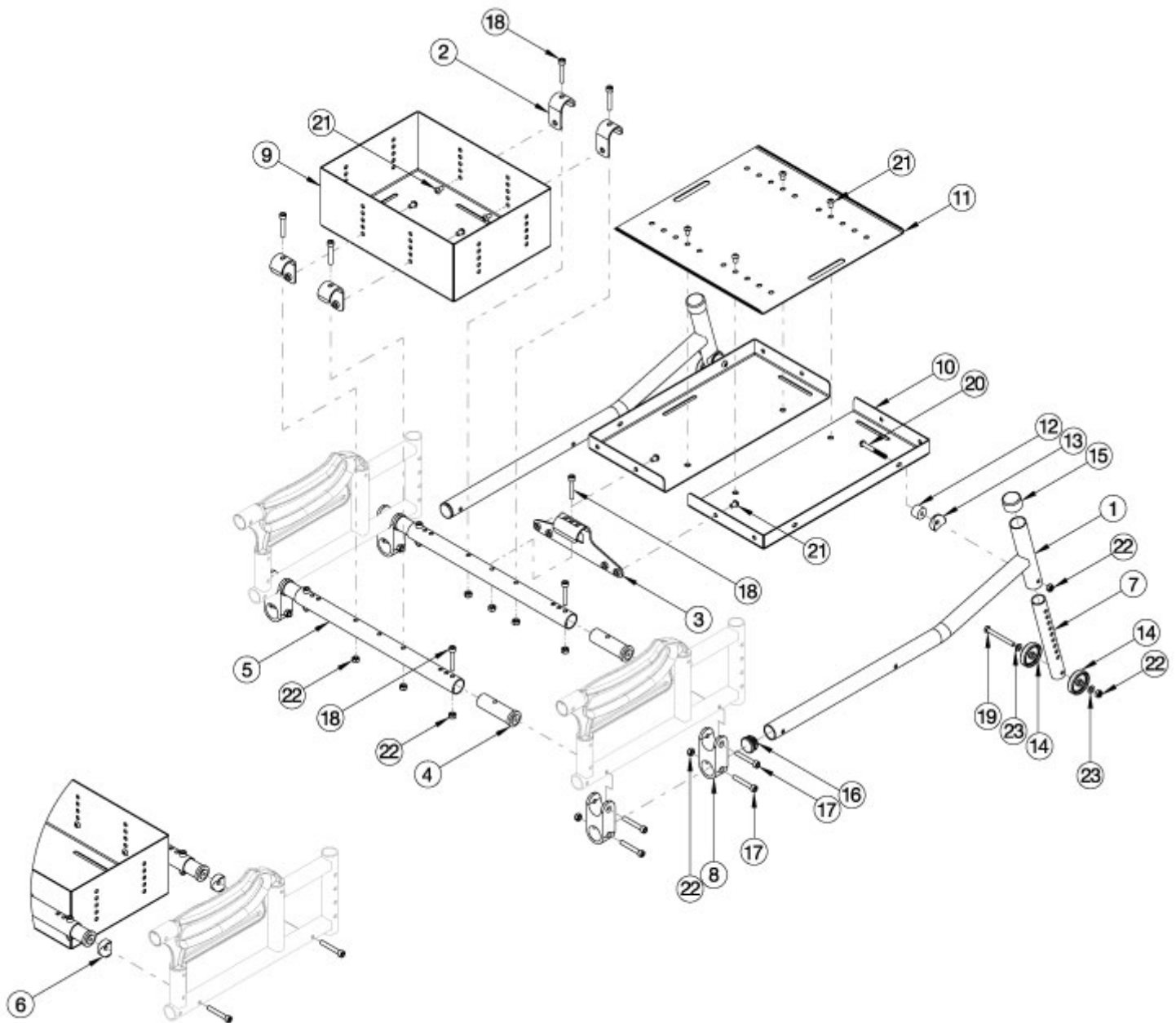


Arc Vent and Battery Tray



Battery Tray only

Vent Tray assemblies are chair width dependent and are 3.5" less than chair width x 14" length x 1" depth. Battery Trays are 8.5" W x 11.25" L x 4.25" D. Both require Rigid Base and Extended Rear Frame. Minimum chair width 16".

Item Number	Part Number	Description	Quantity
1, 7, 12-16, 20, 22, 23	112952	Vent Tray Anti-Tip, Arc (Each)	1
1-5, 7-23	112953	Vent & Battery Tray Assembly, Arc	1
1, 3-5, 7, 8, 10-23	112954	Vent Tray Assembly, Arc	1

Item Number	Part Number	Description	Quantity
2, 4-6, 9, 17, 19, 21, 22	112955	Battery Tray Assembly, Arc	1
1	110280	Extension, Vent Tray	2
2	110281	Hook, Battery Tray	4
3	110282	Hook, Vent Tray	1
4	110283	Strut End, VBT	4
5	110284	Strut Tube, VBT	2
6	110254	Strut Saddle, Battery Tray	4
7	110268	Anti-Tip Tube, Vent Tray	2
8	110269	Mount Extension, Vent Tray / Tipping Lever	4
9	001285	Battery Tray U1 TILT	1
10	001288	Vent Tray TILT	2
11	001289	Vent Tray Growth Plate TILT	1
12	102047	Spacer, .25ID x .75OD x .50LG	2
13	000055	Saddle 1"	2
15	001171	Anti Tip Tube Cap Focus	2
16	100804	Tube End Plug 1"	2
17	101847	M6 x 40 SHCS Blk Zn	4
18	101810	M6 x 35 SHCS BLK ZC	1
19	100677	M6 x 60 CLS10.9 DIN931 HHCS ZC	2
20	101781	M6 x 50mm Partial Thread BHCS Blk ZC	4
21	101184	M6 x 10 BTN SHCS BLKZC w/Patch	1
22	100658	M6 Nylock Nut Blk Zn	1
23	100746	M6 Flat Washer Blk Zn	1