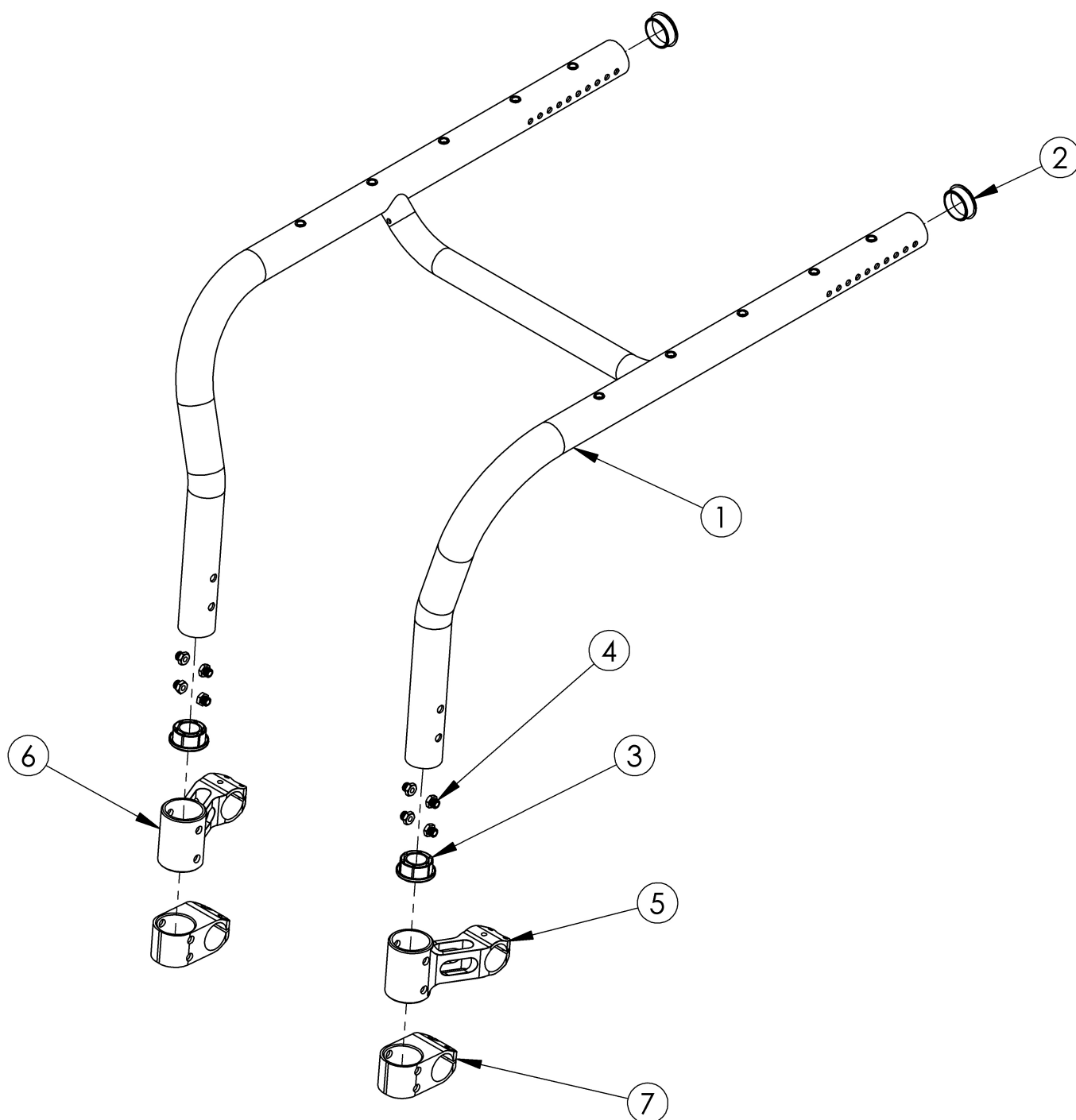


Rogue ALX Rigid Frame (Formerly Tsunami)



Replacement rigid frames may be quoted, but must be ordered through Customer Service. Serial number required upon order. Depending on configuration, new caster mounts may be required. If transit is present, new front transit brackets may be required. If quoting a Frame for Australia or New Zealand, 122921 is required when transit is not present.

Item Number	Part Number	Description	Quantity
2	101113	Tube End Plug 1 3/8"	2
3	000490	Sleeve Footrest Plastic Rigid	2
4	000491	Caster T-Nut, RG ALX/LW XP	8
	122921	Not AS/NZS 3696.19 Compliant On-Chair Label with Instruction	1