

INSTRUCTION SHEET

Standard to Amputee Axle Plate Conversion

Quickie GT

(Please read and understand instructions before beginning installation)

Tools Required:

- 5mm Allen wrench
- 6mm Allen wrench

- 1) Record camber clamp (item 6) orientation and location on axle plate (item 4) before disassembly

Remove: (Reference Fig 1)

- 2) Remove both rear wheels.
- 3) Remove (Qty 4) M6 SHCS (items 2 & 3), (Qty 4) lock washers (item 8), and (Qty 2) nut plates (item 5).
- 4) Slide camber clamps, (item 6), and camber tube assembly (item 7) off of the existing axle plates.
- 5) Remove (Qty 4) M8 SHCS (item 9).
- 6) Remove (Qty 4) M6 SHCS (item 1) and (Qty 4) lock washers (item 8). Remove standard axle plates.

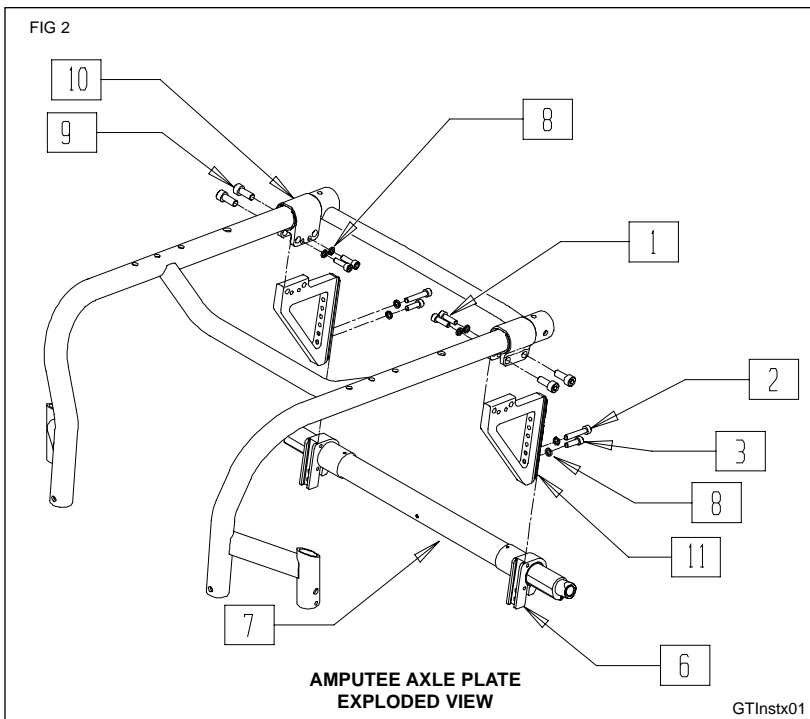
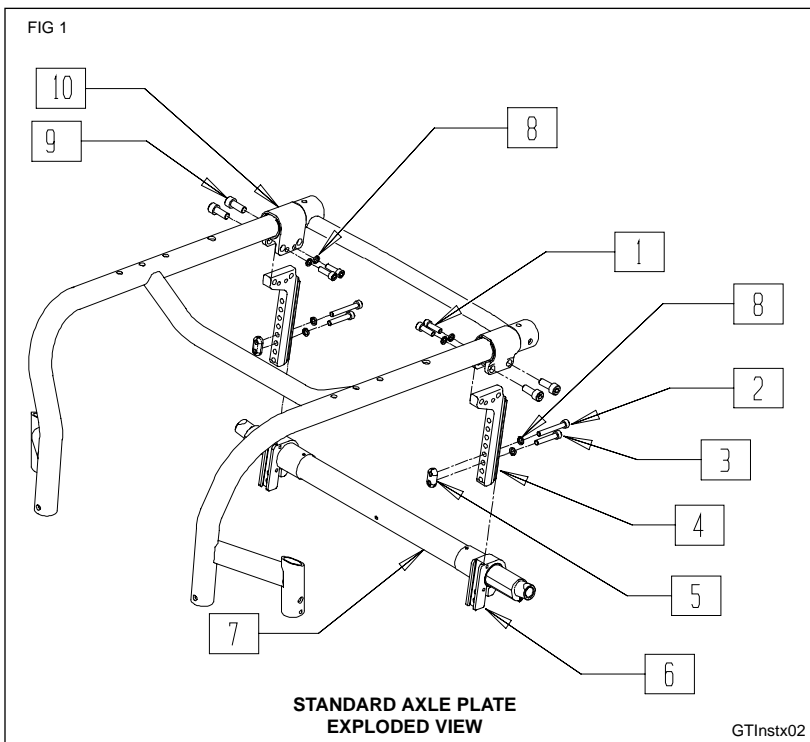
Install: (Reference Fig 2)

- 7) Install (Qty 2) amputee axle plates (item 11) on to axle plate clamps (item 10) using (Qty 4) M6 SHCS (item 1) and (Qty 4) lock washer (item 8), tighten securely to 144 in-lbs.
- 8) Install M8 SHCS screws (item 9) (Qty 4) only to hand tightness.
- 9) Recall setup from step 1 above. Slide camber tube clamps (item 6) and camber tube assembly (item 7) onto amputee axle plates (item 11) and attach using (Qty 2) M6 SHCS x 35mm long (item 2) and (Qty 2) M6 SHCS x 20mm long (item 3) and (Qty 4) lock washers (item 8).

Note: Longer screw installed closest to camber tube as shown.

- 10) Re-Install camber clamps in their original orientation and position prior to step 3. Hold camber clamps against camber sleeve while tightening. Refer to Owners Manual for additional rear seat height adjustments.
- 11) Re-Install rear wheels and axle assemblies
- 12) Refer to Owners Manual for toe in/out, CG and rear wheel gap adjustment.

WARNING! Changing any components or settings of the rear axle assembly will change Stability Characteristics. Always use Anti-Tips or an attendant behind the chair until the rider becomes accustomed to the change.



FOR DEALER USE Installed by: _____ Serial #: _____ Date: _____ (retain as record of installation)