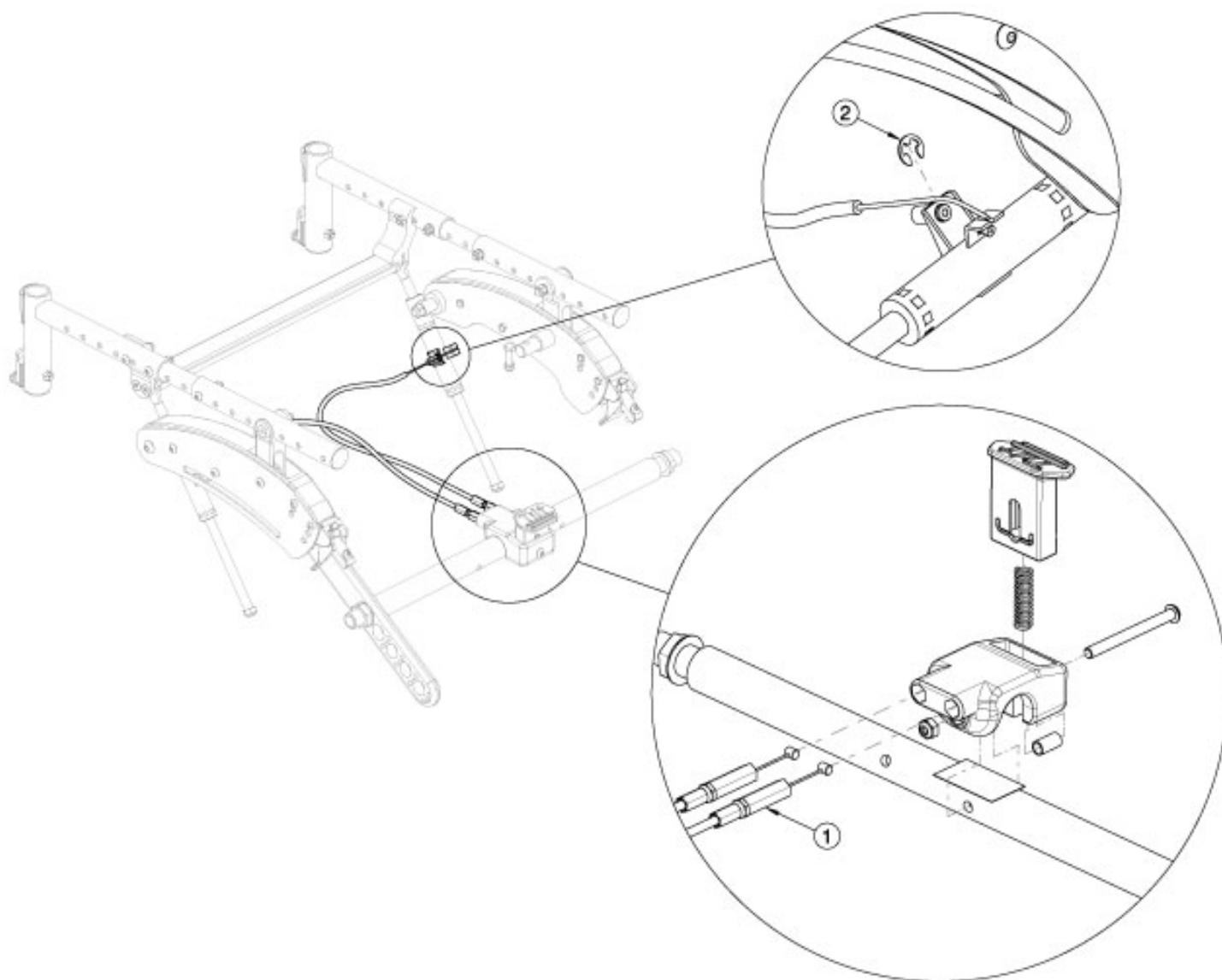


# Flip Foot Tilt - Growth



Has your width changed? If yes, please review the notes below the tilt cable part numbers to determine if a new foot tilt cable is necessary.

Item Number	Part Number	Description	Quantity
1a, 2, 9	502834	Cable, Foot Tilt, Short FLIP <i>Used with Self Propel Axle Plate or with Standard Axle Plate and 10-13" Widths. This kit contains a pair of cables.</i>	1
1b, 2, 9	502835	Cable, Foot Tilt, Long FLIP <i>Used with Standard Axle Plate and 14-18" Widths. This kit contains a pair of cables.</i>	1