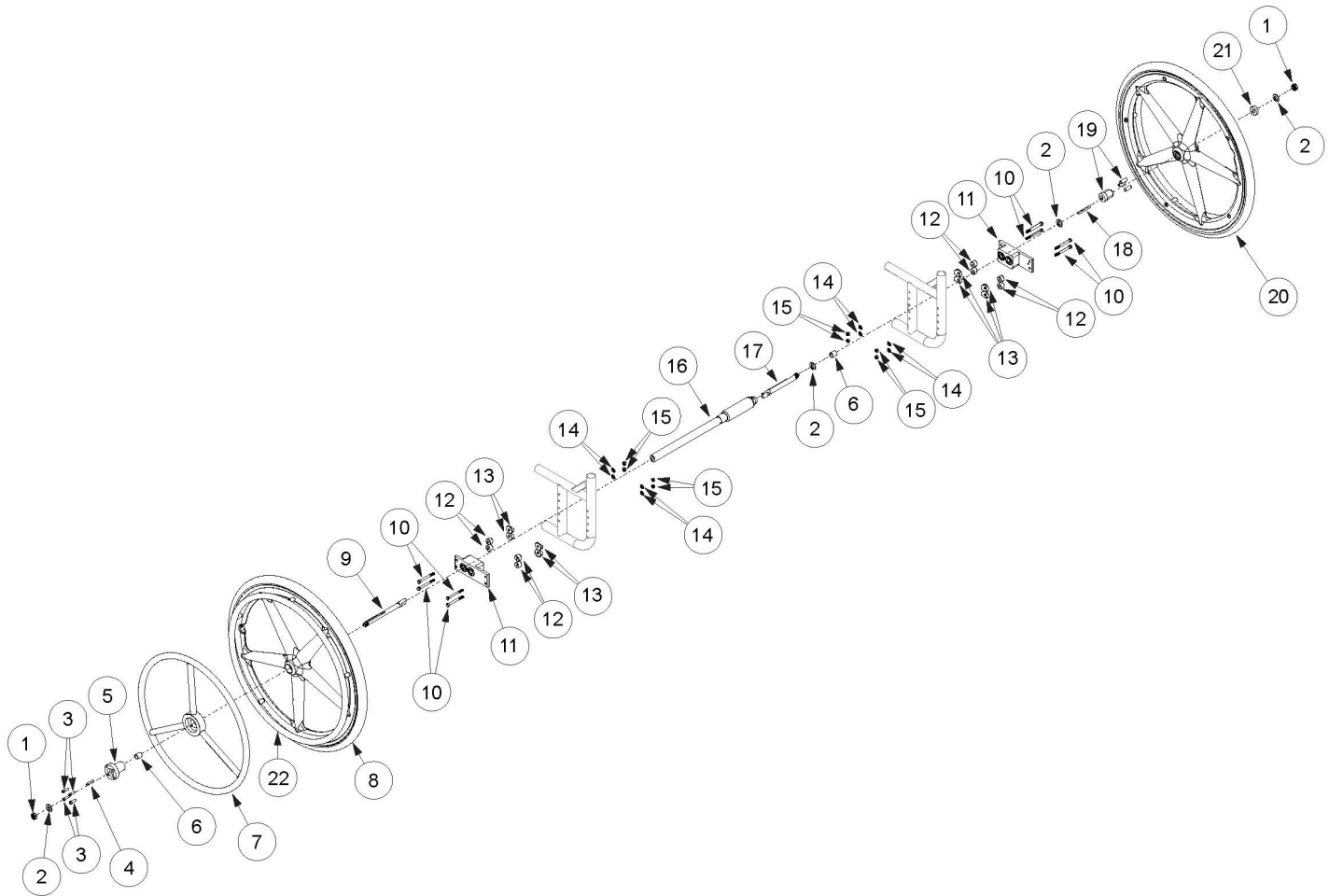


## **(Discontinued) Catalyst / Spark One Arm Drive Blade Style**



One Arm Drive Kits do not include rear tires. If retrofitting from Hex One Arm Drive, you will need a new drive shaft, axles (#9 and #17), One Arm Drive spacer (#6) and installation instruction DCN0503.

| Item Number                              | Part Number | Description   | Quantity |
|--|-------------|---|----------|
| 1 - 6, 9, 17b, 18                        | 108079      | Blade One Arm Drive Axle Assembly Short<br><i>Used on 11" wide Spark with Pediatric T-Arms, Flip Up Arms, or No Arms</i>  | 1        |
| 10a - 10h, 12, 13a, 13b, 14, 15          | 109438      | Catalyst Blade One Arm Drive Attaching Hardware Kit<br><i>Includes all fasteners required to attach Blade One Arm Drive regardless of chair configuration</i>       | 1        |
| 10a, 10b, 10d, 10e, 10g, 12, 13b, 14, 15 | 109439      | Spark Blade One Arm Drive Attaching Hardware Kit<br><i>Includes all fasteners required on Spark to attach Blade One Arm Drive regardless of chair configuration</i> | 1        |
| 1  | 101459      | 1/2-20 NTE JAM NYL INS L/N BLK ZC   | 2        |

| Item Number | Part Number | Description  | Quantity |
|-------------|-------------|--|----------|
| 3           | 104056      | 10-32 X 3/4" Socket Head Cap Screw   | 4        |
| 5           | 108083      | Hub Handrim, One Arm Drive   | 1        |
| 6           | 107564      | One Arm Drive Spacer<br><i>Qty 1 always used on drive side. Qty 2 used with standard 5.03" axle (part number 107574)</i>                         | 2        |
| 7c          | 003198      | One Arm Drive Handrim Aluminum 24"   | 1        |
| 10a         | 100674      | M6 x 45 CLS10.9 DIN931 HHCS ZC   | 4        |
| 10b         | 101826      | M6 x 50 HHCS Blk Zn  | 4        |
| 10c         | 100676      | M6 x 55 CLS10.9 DIN931 HHCS ZC   | 4        |
| 10d         | 100677      | M6 x 60 CLS10.9 DIN931 HHCS ZC   | 4        |
| 10e         | 100679      | M6 x 65 CLS 8.8 DIN931 HHCS ZC   | 4        |
| 10f         | 100680      | M6 x 70 CLS 8.8 DIN931 HHCS ZC   | 4        |
| 10g         | 100544      | M6 x 75 CLS 8.8 DIN931 HHCS ZC   | 4        |
| 10h         | 100660      | M6 x 80mm CLS8.8 DIN931 HHCS ZC  | 4        |
| 11          | 003207      | One Arm Drive Catalyst Axle Plate  | 1        |
| 12          | 003172      | One Arm Drive Cat Axle Plate Spacer<br><i>Used when Height Adjustable T-Arms (Standard, Low, and Flip Backs) and Flip Back Arms are present.</i> | 8        |
| 13a         | 000056      | Saddle 1 1/8"<br><i>Used with Curved Rear Frames</i>   | 8        |
| 13b         | 000055      | Saddle 1"<br><i>Used with Depth Adjustable / Spark Rear Frames</i>   | 8        |
| 14          | 100746      | M6 Flat Washer Blk Zn  | 8        |
| 15          | 100658      | M6 Nylock Nut Blk Zn   | 10       |
| 16a         | 107562      | One Arm Drive - Blade Drive Shaft 8.72"  | 1        |
| 16b         | 107563      | One Arm Drive - Blade Drive Shaft 9.72"  | 1        |
| 16j         | 107571      | One Arm Drive - Blade Drive Shaft 17.67"   | 1        |
| 16l         | 108072      | One Arm Drive - Blade Drive Shaft 19.67"   | 1        |
| 17a         | 107574      | One Arm Drive - Blade Style Axle 5.03"<br><i>Used on 12" - 22" wide chairs and 11" wide Spark with Height Adjustable T-Arms</i>                  | 1        |
| 22a         | 101897      | Handrim Aluminum Anodized 5 Rivet Nut 20"  | 1        |

| Item Number | Part Number | Description                               | Quantity |
|-------------|-------------|---|----------|
| 22b         | 101898      | Handrim Aluminum Anodized 5 Rivet Nut 22" | 1        |

The same nut, 100658, is used in all configurations.

|                       | Curved Rear Frame |                       |        |                      |                       |     |                 |                     |     |
|-----------------------|-------------------|-----------------------|--------|----------------------|-----------------------|-----|-----------------|---------------------|-----|
|                       | No Arms           |                       |        | Flip Back and T-Arms |                       |     | Swing Away Arms |                     |     |
|                       | Part No.          | Description           | Qty    | Part No.             | Description           | Qty | Part No.        | Description         | Qty |
| No Options            | 100674            | M6 x 45 HHCS Zn       | 4      | 100677               | M6 x 60 HHCS Zn       | 4   | 100676          | M6 x 55 HHCS Zn     | 2   |
|                       | 100746            | M6 Flat Washer Blk Zn | 4      | 100746               | M6 Flat Washer Blk Zn | 4   | 100674          | M6 x 45 HHCS Zn     | 2   |
|                       |                   |                       |        | 000056               | Saddle                | 4   | 101826          | M6 x 50 HHCS Blk Zn | 1   |
|                       |                   |                       |        | 003172               | Spacer                | 4   |                 |                     |     |
| Anti-Tips             | 100674            | M6 x 45 HHCS Zn       | 2      | 100679               | M6 x 65 HHCS Zn       | 2   | 100679          | M6 x 65 HHCS Zn     | 2   |
|                       | 101826            | M6 x 50 HHCS Black Zn | 2      | 100677               | M6 x 60 HHCS Zn       | 2   | 100674          | M6 x 45 HHCS Zn     | 2   |
|                       |                   |                       |        | 000056               | Saddle                | 4   | 101826          | M6 x 50 HHCS Blk Zn | 1   |
|                       |                   |                       |        | 003172               | Spacer                | 4   |                 |                     |     |
| Transit               | 100674            | M6 x 45 HHCS Zn       | 3      | 100680               | M6 x 70 HHCS Zn       | 2   | 100677          | M6 x 60 HHCS Zn     | 2   |
|                       | 100676            | M6 x 55 HHCS Blk Zn   | 2      | 100677               | M6 x 60 HHCS Zn       | 2   | 100674          | M6 x 45 HHCS Zn     | 2   |
|                       |                   |                       |        | 100674               | M6 x 45 HHCS Zn       | 1   | 100676          | M6 x 55 HHCS Zn     | 1   |
|                       |                   |                       |        | 000056               | Saddle                | 4   |                 |                     |     |
|                       |                   |                       | 003172 | Spacer               | 4                     |     |                 |                     |     |
| Anti-Tips and Transit | 100674            | M6 x 45 HHCS Zn       | 3      | 100677               | M6 x 60 HHCS Zn       | 2   | 100680          | M6 x 70 HHCS Zn     | 2   |
|                       | 100679            | M6 x 65 HHCS Zn       | 2      | 100660               | M6 x 80 HHCS Zn       | 2   | 100674          | M6 x 45 HHCS Zn     | 2   |
|                       |                   |                       |        | 100674               | M6 x 45 HHCS Zn       | 1   | 100676          | M6 x 55 HHCS Zn     | 1   |
|                       |                   |                       |        | 000056               | Saddle                | 4   |                 |                     |     |
|                       |                   |                       | 003172 | Spacer               | 4                     |     |                 |                     |     |

|                       | Depth Adjustable / Spark Rear Frame                                     |                       |        |          |                       |     |
|-----------------------|---|-----------------------|--------|----------|-----------------------|-----|
|                       | Angle Adj. Locking Flip Up, Tubular Flip Up, Pediatric T-Arm or No Arms |                       |        | T-Arms   |                       |     |
|                       | Part No.  | Description           | Qty    | Part No. | Description           | Qty |
| No Options            | 100674  | M6 x 45 HHCS Zn       | 4      | 100677   | M6 x 60 HHCS Zn       | 4   |
|                       | 100746  | M6 Flat Washer Blk Zn | 4      | 100746   | M6 Flat Washer Blk Zn | 4   |
|                       |   |                       |        | 000055   | Saddle                | 4   |
|                       |   |                       |        | 003172   | Spacer                | 4   |
| Anti-Tips             | 100674  | M6 x 45 HHCS Zn       | 2      | 100679   | M6 x 65 HHCS Zn       | 2   |
|                       | 101826  | M6 x 50 HHCS Black Zn | 2      | 100677   | M6 x 60 HHCS Zn       | 2   |
|                       |   |                       |        | 000055   | Saddle                | 4   |
|                       |   |                       |        | 003172   | Spacer                | 4   |
| Transit               | 100674  | M6 x 45 HHCS Zn       | 3      | 100679   | M6 x 65 HHCS Zn       | 2   |
|                       | 101826  | M6 x 50 HHCS Black Zn | 2      | 100677   | M6 x 60 HHCS Zn       | 2   |
|                       |   |                       |        | 100674   | M6 x 45 HHCS Zn       | 1   |
|                       |   |                       |        | 000055   | Saddle                | 4   |
|                       |   |                       | 003172 | Spacer   | 4                     |     |
| Anti-Tips and Transit | 100674  | M6 x 45 HHCS Zn       | 3      | 100544   | M6 x 75 HHCS Zn       | 2   |
|                       | 100677  | M6 x 60 HHCS Zn       | 2      | 100677   | M6 x 60 HHCS Zn       | 2   |
|                       |   |                       |        | 100674   | M6 x 45 HHCS Zn       | 1   |
|                       |   |                       |        | 000055   | Saddle                | 4   |
|                       |   |                       | 003172 | Spacer   | 4                     |     |

| Catalyst Seat Width | Part No. | Compressed Drive Shaft Length | Extended Drive Shaft Length | Configurations                                    |
|---------------------|----------|-------------------------------|-----------------------------|---|
| *11"                | 107562   | 7.12"                         | 8.72"                       | For no arms, Flip-Up & Swing Away                 |
| 11"                 | 107562   | 7.12"                         | 8.72"                       | Saddles + spacers required for flipbacks & T-Arms |
| 12"                 | 107562   | 7.12"                         | 8.72"                       | For no arms, Flip-Up & Swing Away                 |
| 12"                 | 107563   | 8.12"                         | 9.72"                       | Saddles + spacers required for flipbacks & T-Arms |
| 13"                 | 107563   | 8.12"                         | 9.72"                       | For no arms, Flip-Up & Swing Away                 |
| 13"                 | 107032   | 9.14"                         | 10.74"                      | Saddles + spacers required for flipbacks & T-Arms |
| 14"                 | 107032   | 9.14"                         | 10.74"                      | For no arms, Flip-Up & Swing Away                 |
| 14"                 | 107565   | 10.12"                        | 11.72"                      | Saddles + spacers required for flipbacks & T-Arms |
| 15"                 | 107565   | 10.12"                        | 11.72"                      | For no arms, Flip-Up & Swing Away                 |
| 15"                 | 107566   | 11.12"                        | 12.72"                      | Saddles + spacers required for flipbacks & T-Arms |
| 16"                 | 107566   | 11.12"                        | 12.72"                      | For no arms, Flip-Up & Swing Away                 |
| 16"                 | 107567   | 12.22"                        | 13.82"                      | Saddles + spacers required for flipbacks & T-Arms |
| 17"                 | 107567   | 12.22"                        | 13.82"                      | For no arms, Flip-Up & Swing Away                 |
| 17"                 | 107568   | 13.07"                        | 14.67"                      | Saddles + spacers required for flipbacks & T-Arms |
| 18"                 | 107568   | 13.07"                        | 14.67"                      | For no arms, Flip-Up & Swing Away                 |
| 18"                 | 107569   | 14.07"                        | 15.67"                      | Saddles + spacers required for flipbacks & T-Arms |
| 19"                 | 107569   | 14.07"                        | 15.67"                      | For no arms, Flip-Up & Swing Away                 |
| 19"                 | 107570   | 15.07"                        | 16.67"                      | Saddles + spacers required for flipbacks & T-Arms |
| 20"                 | 107570   | 15.07"                        | 16.67"                      | For no arms, Flip-Up & Swing Away                 |
| 20"                 | 107571   | 16.07"                        | 17.67"                      | Saddles + spacers required for flipbacks & T-Arms |
| 21"                 | 107571   | 16.07"                        | 17.67"                      | For no arms, Flip-Up & Swing Away                 |
| 21"                 | 107572   | 17.07"                        | 18.67"                      | Saddles + spacers required for flipbacks & T-Arms |
| 22"                 | 107572   | 17.07"                        | 18.67"                      | For no arms, Flip-Up & Swing Away                 |
| 22"                 | 108072   | 18.07"                        | 19.67"                      | Saddles + spacers required for flipbacks & T-Arms |

\*For this configuration, do not use spacer 107567 and replace axle 107574 with axle 108073.