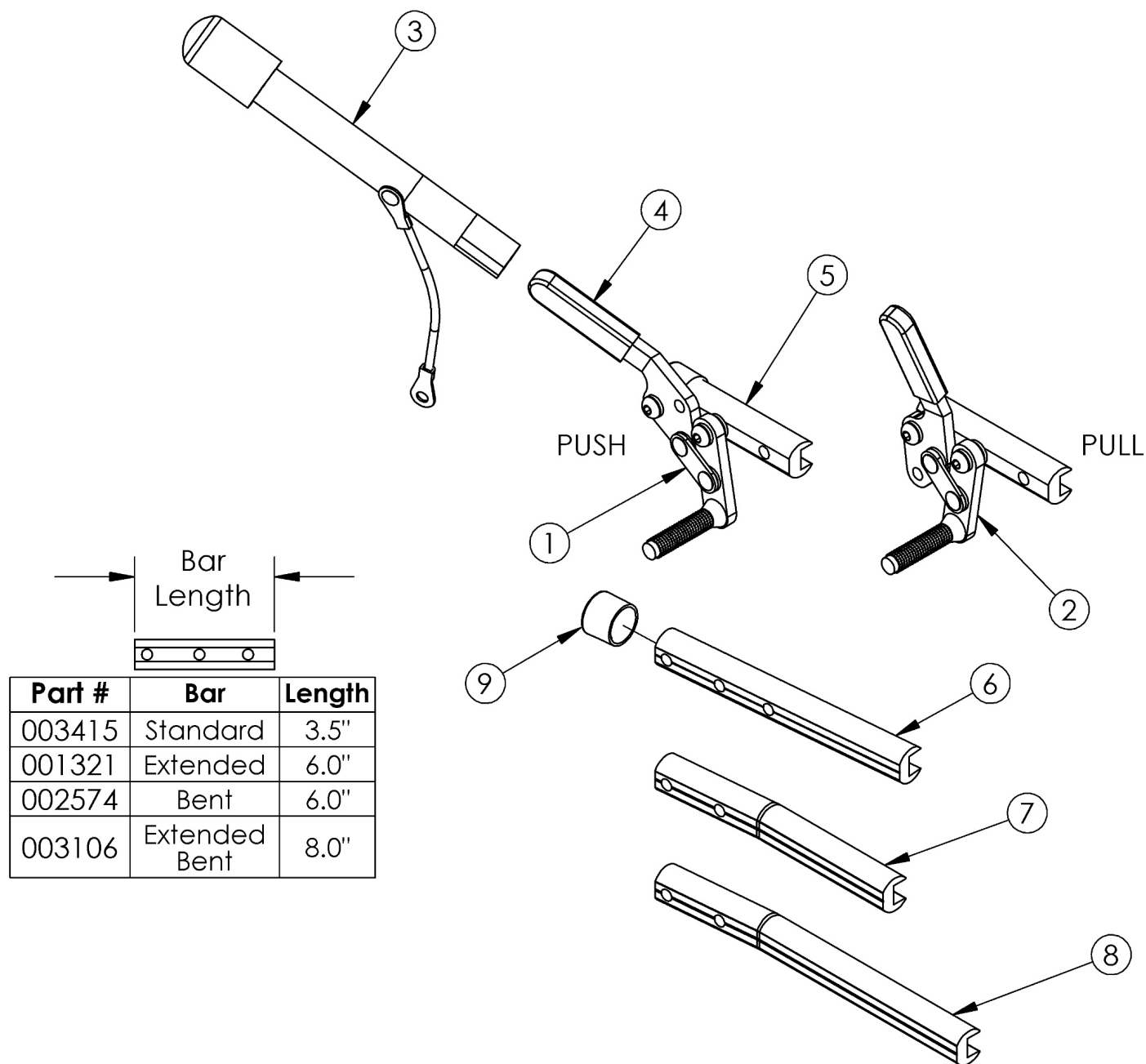


Clik Push and Pull to Lock Wheel Locks



Please confirm wheel lock bar length and style for correct replacement parts

Item Number	Part Number	Description	Quantity
1a, 4b, 5	503206	Wheel Lock Assembly, Push Right w/ Instruction <i>This kit contains 200251 wheel lock along with an instruction for reversing the wheel lock</i>	1
1b, 4b, 5	503205	Wheel Lock Assembly, Push Left w/ Instruction <i>This kit contains 200252 wheel lock along with an instruction for reversing the wheel lock</i>	1

Item Number	Part Number	Description	Quantity
1a, 1b, 4b, 5	124906	Wheel Lock Assembly, Push PAIR	1
2a, 4b, 5	503207	Wheel Lock Assembly, Pull Right w/ Instruction <i>This kit contains 200253 wheel lock along with an instruction for reversing the wheel lock</i>	1
2b, 4b, 5	503208	Wheel Lock Assembly, Pull Left w/ Instruction <i>This kit contains 200254 wheel lock along with an instruction for reversing the wheel lock</i>	1
2a, 2b, 4b, 5	124907	Wheel Lock Assembly, Pull PAIR	1
1a, 3, 4b, 5	115311	Wheel Lock Assembly, Push w/ Extension, Right with Instruction <i>This kit contains 112041 which is temporarily replacing the 200410 wheel lock. It contains an instruction for reversing the wheel lock.</i>	1
1b, 3, 4b, 5	115312	Wheel Lock Assembly, Push w/ Extension, Left with Instruction <i>This kit contains 112042 which is temporarily replacing the 200411 wheel lock. It contains an instruction for reversing the wheel lock.</i>	1
1a, 1b, 3, 4b, 5	124913	Wheel Lock Assembly, Push w/ Extension PAIR	1
2a, 3, 4a, 5	503211	Wheel Lock Assembly, Pull Extension Right w/ Instruction <i>This kit contains 200412 wheel lock along with an instruction for reversing the wheel lock</i>	1
2b, 3, 4a, 5	503212	Wheel Lock Assembly, Pull Extension Left w/ Instruction <i>This kit contains 200413 wheel lock along with an instruction for reversing the wheel lock</i>	1
2a, 2b, 3, 4a, 5	124909	Wheel Lock Assembly, Pull Extension PAIR	1
1a, 4b, 6, 9	503063	Wheel Lock Push w/ Extended Bar Right w/ Instruction <i>This kit contains 200251 wheel lock along with an instruction for reversing the wheel lock</i>	1
1b, 4b, 6, 9	503064	Wheel Lock Push w/ Extended Bar Left w/ Instruction <i>This kit contains 200252 wheel lock along with an instruction for reversing the wheel lock</i>	1
2a, 4b, 6, 9	503065	Wheel Lock Pull w/ Extended Bar Right w/ Instruction <i>This kit contains 200253 wheel lock along with an instruction for reversing the wheel lock</i>	1
2b, 4b, 6, 9	503066	Wheel Lock Pull w/ Extended Bar Left w/ Instruction <i>This kit contains 200254 wheel lock along with an instruction for reversing the wheel lock</i>	1
1a, 3, 4a, 6, 9	503067	Wheel Lock Push w/ Extension and Extended Bar Right w/ Instruction <i>This kit contains 200410 wheel lock along with an instruction for reversing the wheel lock</i>	1
1b, 3, 4a, 6, 9	503068	Wheel Lock Push w/ Extension and Extended Bar Left w/ Instruction <i>This kit contains 200411 wheel lock along with an instruction for reversing the wheel lock</i>	1

Item Number	Part Number	Description	Quantity
2a, 3, 4a, 6, 9	503069	Wheel Lock Pull w/ Extension and Extended Bar Right w/ Instruction <i>This kit contains 200412 wheel lock along with an instruction for reversing the wheel lock</i>	1
2b, 3, 4a, 6, 9	503070	Wheel Lock Pull w/ Extension and Extended Bar Left w/ Instruction <i>This kit contains 200413 wheel lock along with an instruction for reversing the wheel lock</i>	1
1a, 4b, 7	503071	Wheel Lock Push w/ Bent Bar Right w/ Instruction <i>This kit contains 200251, used with Offset Frames</i>	1
1b, 4b, 7	503072	Wheel Lock Push w/ Bent Bar Left w/ Instruction <i>This kit contains 200252, used with Offset Frames</i>	1
2a, 4b, 7	503073	Wheel Lock Pull w/ Bent Bar Right w/ Instruction <i>This kit contains 200253, used with Offset Frames</i>	1
2b, 4b, 7	503074	Wheel Lock Pull w/ Bent Bar Left w/ Instruction <i>This kit contains 200254, used with Offset Frames</i>	1
1a, 3, 4a, 7	503075	Wheel Lock Push w/ Extension and Bent Bar Right w/ Instruction <i>This kit contains 200410, used with Offset Frames</i>	1
1b, 3, 4a, 7	503076	Wheel Lock Push w/ Extension and Bent Bar Left w/ Instruction <i>This kit contains 200411, used with Offset Frames</i>	1
2a, 3, 4a, 7	503077	Wheel Lock Pull w/ Extension and Bent Bar Right w/ Instruction <i>This kit contains 200412, used with Offset Frames</i>	1
2b, 3, 4a, 7	503078	Wheel Lock Pull w/ Extension and Bent Bar Left w/ Instruction <i>This kit contains 200413, used with Offset Frames</i>	1
1a, 4a, 8, 9	122520	Wheel Lock Push w/ Extended Bent Bar Right w/ Instruction <i>This kit contains 200251, used as needed with Offset Frames</i>	1
1b, 4a, 8, 9	122521	Wheel Lock Push w/ Extended Bent Bar Left w/ Instruction <i>This kit contains 200252, used as needed with Offset Frames</i>	1
2a, 4a, 8, 9	122522	Wheel Lock Pull w/ Extended Bent Bar Right w/ Instruction <i>This kit contains 200253, used as needed with Offset Frames</i>	1
2b, 4a, 8, 9	122523	Wheel Lock Pull w/ Extended Bent Bar Left w/ Instruction <i>This kit contains 200254, used as needed with Offset Frames</i>	1
1a, 3, 4a, 8, 9	122524	Wheel Lock Push w/Extension and Extended Bent Bar Left w/ Instruction <i>This kit contains 200411, used as needed with Offset Frames</i>	1
1b, 3, 4a, 8, 9	122525	Wheel Lock Push w/Extension and Extended Bent Bar Right w/ Instruction <i>This kit contains 200410, used as needed with Offset Frames</i>	1

Item Number	Part Number	Description	Quantity
2a, 3, 4a, 8, 9	122526	Wheel Lock Pull w/Extension and Extended Bent Bar Left w/ Instruction <i>This kit contains 200413, used as needed with Offset Frames</i>	1
2b, 3, 4a, 8, 9	122527	Wheel Lock Pull w/Extension and Extended Bent Bar Right w/ Instruction <i>This kit contains 200412, used as needed with Offset Frames</i>	1
3	200369	Wheel Lock Extension <i>6" long extension</i>	1
4a	102336	Wheel Lock Cover Plastic <i>Used with Kits 503211 - 503212, 503067 - 503070, and 503075 - 503078, and 122520 - 122527.</i>	1
4b	111247	Wheel Lock Cover Plastic <i>Used with Kits 503205 - 503208, 115311 - 115312, 503063 - 503066, 503071 - 503074.</i>	1
5	003415	Standard Wheel Lock Bar	1
6	001321	Wheel Lock Mount Bar Extended <i>Used as needed</i>	1
7	002574	Wheel Lock Bar Bent <i>Used with Offset Frame</i>	1
8	003106	Extended Wheel Lock Bar Bent <i>Used as needed with Offset Frame</i>	1
9	002835	End Cap Plastic 3/4" <i>Used as needed with Extended Wheel Lock Bars</i>	1