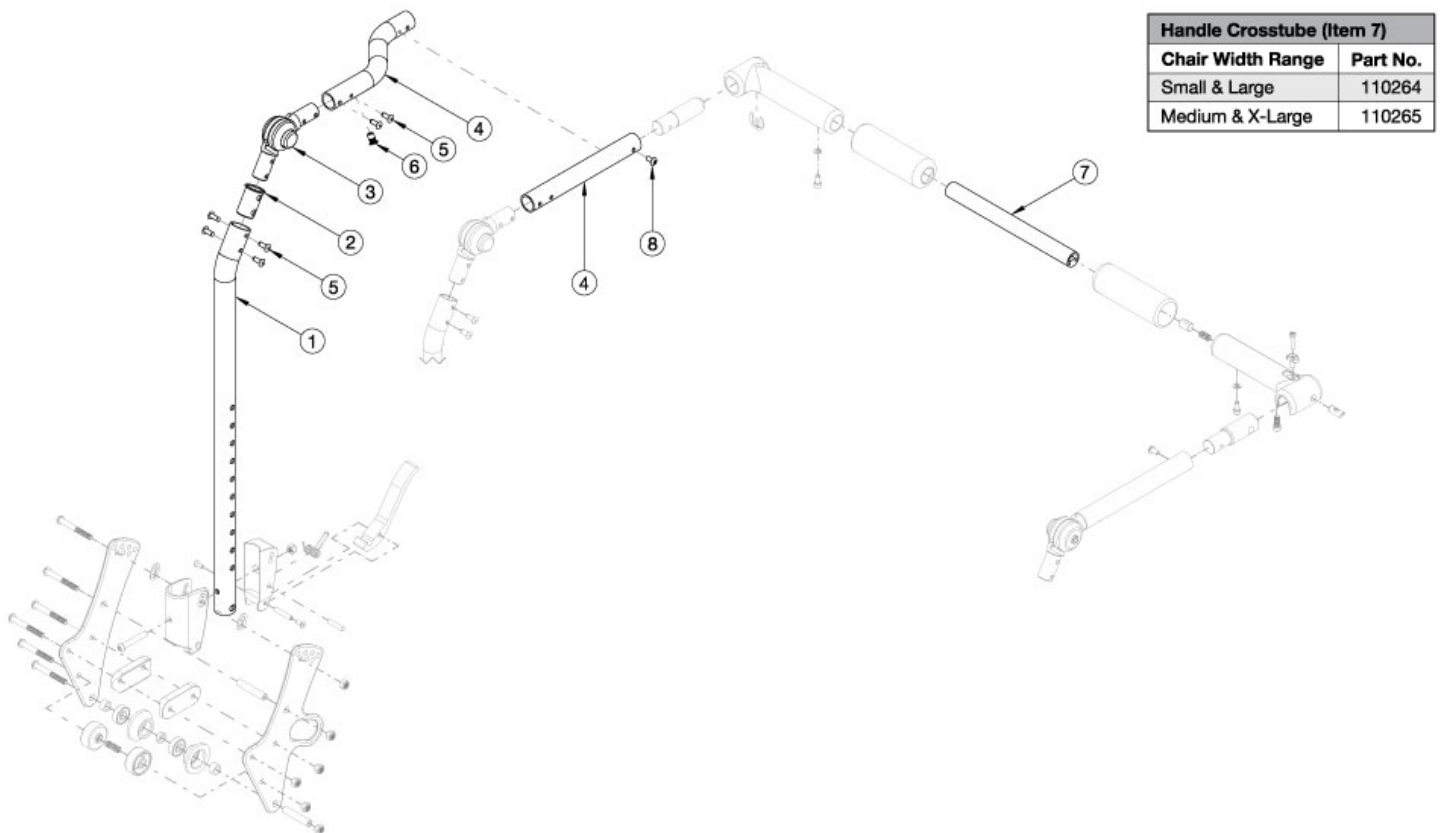


# Arc Fixed Height with Folding Adjustable Handle Backrest - Growth



Callout #21: 10"-13" widths receive the curved tube and 14"-18" widths receive the straight shaped tube. When changing backrest types, check to see if new cables and tilt triggers are needed for both foot and hand tilts. If chair was invoiced prior to 12/18/23, an upper back tube assembly is required. If chair was invoiced after to 12/18/23, upper back tube assembly parts can now be purchased individually

Item Number	Part Number	Description	Quantity
1a, 2, 3, 4a, 5, 6, 8	113929	Fixed Height Back Tube Assembly, Short, 10-13" Wide, Right, Arc	1
1a, 2, 3, 4b, 5, 6, 8	113930	Fixed Height Back Tube Assembly, Short, 10-13" Wide, Left, Arc	1
1a, 2, 3, 4c, 5, 6, 8	113933	Fixed Height Back Tube Assembly, Short, 14-18" Wide, Right, Arc	1
1a, 2, 3, 4d, 5, 6, 8	113934	Fixed Height Back Tube Assembly, Short, 14-18" Wide, Left, Arc	1
1b, 2, 3, 4a, 5, 6, 8	113931	Fixed Height Back Tube Assembly, Tall, 10-13" Wide, Right, Arc	1
1b, 2, 3, 4b, 5, 6, 8	113932	Fixed Height Back Tube Assembly, Tall, 10-13" Wide, Left, Arc	1
1b, 2, 3, 4c, 5, 6, 8	113935	Fixed Height Back Tube Assembly, Tall, 14-18" Wide, Right, Arc	1
1b, 2, 3, 4d, 5, 6, 8	113936	Fixed Height Back Tube Assembly, Tall, 14-18" Wide, Left, Arc	1

<b>Item Number</b>	<b>Part Number</b>	<b>Description</b>	<b>Quantity</b>
7a	110264	Cross Tube, Rigidizer Handle, 14-16 Wide	1
7b	110265	Cross Tube, Rigidizer Handle, 16-18 Wide	1