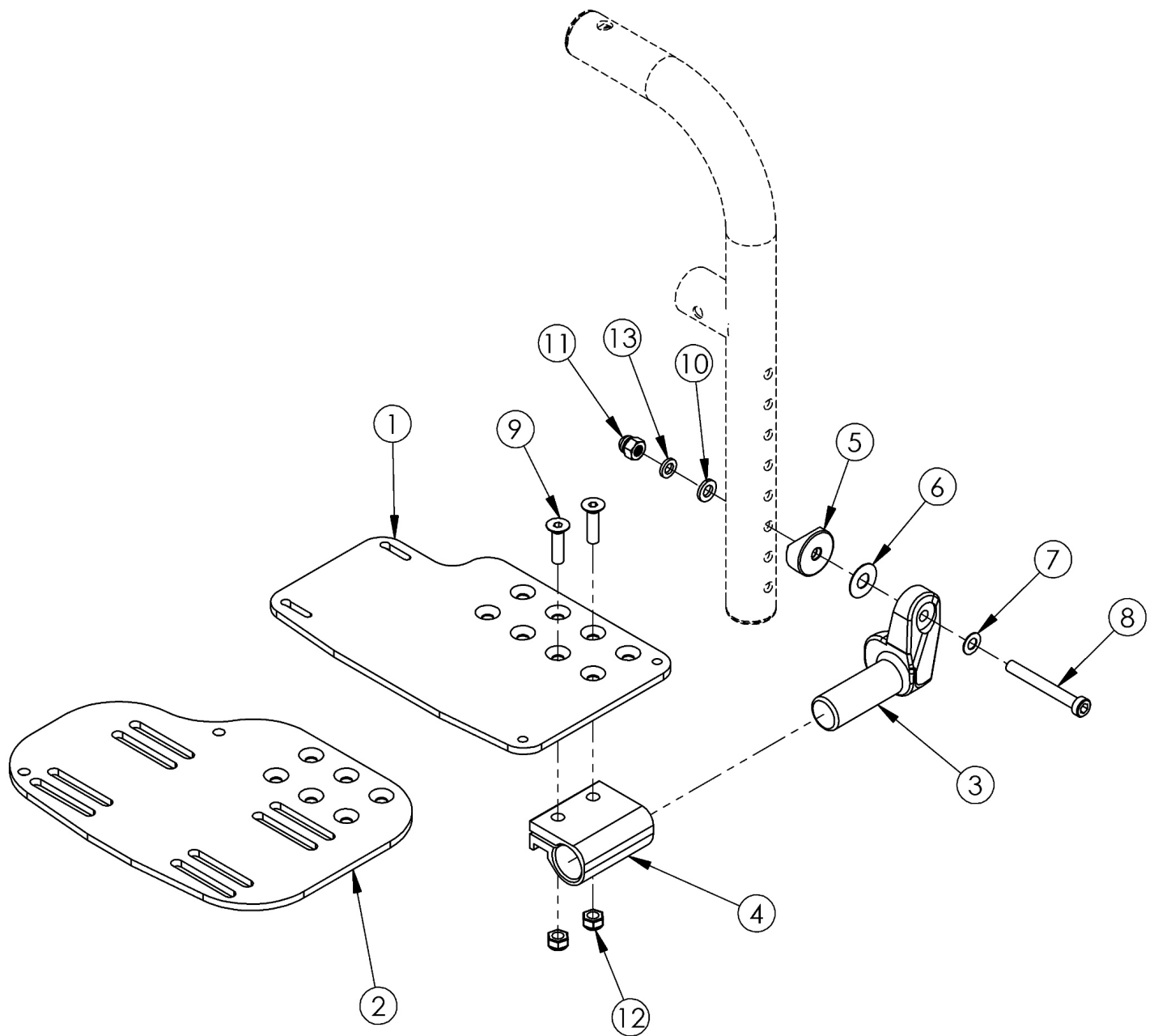


# Angle Adjustable Footplate - Front Mount



Sizes for footplates/assemblies are based on seat width with straight frame; if Tilt chair has Offset Frame, add 2" to seat width

| Item Number  | Part Number | Description  | Quantity |
|--------------|-------------|--|----------|
| 3b, 4-13     | 502214      | Footplate Hardware Kit Angle Adjustable for Front Mount Hanger Left  | 1        |
| 3a, 4-13     | 502215      | Footplate Hardware Kit Angle Adjustable for Front Mount Hanger Right | 1        |
| 3a, 3b, 4-13 | 502216      | Footplate Hardware Kit Angle Adjustable for Front Mount Hanger Pair  | 1        |

| Item Number          | Part Number | Description  | Quantity |
|----------------------|-------------|--|----------|
| 1a, 3b, 4-13         | 500610      | Footplate Angle Adjustable Front Mount Assembly 10-11 Wide Left  | 1        |
| 1b, 3a, 4-13         | 500611      | Footplate Angle Adjustable Front Mount Assembly 10-11 Wide Right   | 1        |
| 1a, 1b, 3a, 3b, 4-13 | 500612      | Footplate Angle Adjustable Front Mount Assembly 10-11 Wide Pair  | 1        |
| 1c, 3b, 4-13         | 500607      | Footplate Angle Adjustable Front Mount Assembly 12-13 Wide Left  | 1        |
| 1d, 3a, 4-13         | 500608      | Footplate Angle Adjustable Front Mount Assembly 12-13 Wide Right   | 1        |
| 1c 1d, 3a, 3b, 4-13  | 500609      | Footplate Angle Adjustable Front Mount Assembly 12-13 Wide Pair  | 1        |
| 2a, 3b, 4-13         | 501055      | Footplate Angle Adjustable Front Mount Assembly 14-15 Wide Left  | 1        |
| 2b, 3a, 4-13         | 501056      | Footplate Angle Adjustable Front Mount Assembly 14-15 Wide Right   | 1        |
| 2a, 2b, 3a, 3b, 4-13 | 501057      | Footplate Angle Adjustable Front Mount Assembly 14-15 Wide Pair  | 1        |
| 2c, 3b, 4-13         | 501058      | Footplate Angle Adjustable Front Mount Assembly 16-17 Wide Left  | 1        |
| 2d, 3a, 4-13         | 501059      | Footplate Angle Adjustable Front Mount Assembly 16-17 Wide Right   | 1        |
| 2c, 2d, 3a, 3b, 4-13 | 501060      | Footplate Angle Adjustable Front Mount Assembly 16-17 Wide Pair  | 1        |
| 2e, 3b, 4-13         | 501061      | Footplate Angle Adjustable Front Mount Assembly 18-24 Wide Left  | 1        |
| 2f, 3a, 4-13         | 501062      | Footplate Angle Adjustable Front Mount Assembly 18-24 Wide Right   | 1        |
| 2e, 2f, 3a, 3b, 4-13 | 501063      | Footplate Angle Adjustable Front Mount Assembly 18-24 Wide Pair  | 1        |
| 2a, 3b, 4-13         | 502205      | Footplate Kit Angle Adjustable w/ Heel Loop for Front Mount Hanger 14-15 Wide Left<br><i>Heel Loop with attaching hardware is included but not pictured</i>  | 1        |
| 2b, 3a, 4-13         | 502206      | Footplate Kit Angle Adjustable w/ Heel Loop for Front Mount Hanger 14-15 Wide Right<br><i>Heel Loop with attaching hardware is included but not pictured</i> | 1        |
| 2a, 2b, 3a, 3b, 4-13 | 502207      | Footplate Kit Angle Adjustable w/ Heel Loop for Front Mount Hanger 14-15 Wide Pair<br><i>Heel Loop with attaching hardware is included but not pictured</i>  | 1        |
| 2c, 3b, 4-13         | 502208      | Footplate Kit Angle Adjustable w/ Heel Loop for Front Mount Hanger 16-17 Wide Left<br><i>Heel Loop with attaching hardware is included but not pictured</i>  | 1        |
| 2d, 3a, 4-13         | 502209      | Footplate Kit Angle Adjustable w/ Heel Loop for Front Mount Hanger 16-17 Wide Right<br><i>Heel Loop with attaching hardware is included but not pictured</i> | 1        |
| 2c, 2d, 3a, 3b, 4-13 | 502210      | Footplate Kit Angle Adjustable w/ Heel Loop for Front Mount Hanger 16-17 Wide Pair<br><i>Heel Loop with attaching hardware is included but not pictured</i>  | 1        |
| 2e, 3b, 4-13         | 502211      | Footplate Kit Angle Adjustable w/ Heel Loop for Front Mount Hanger 18-24 Wide Left   | 1        |

| Item Number          | Part Number | Description  | Quantity |
|----------------------|-------------|--|----------|
|                      |             | <i>Heel Loop with attaching hardware is included but not pictured</i>  |          |
| 2f, 3a, 4-13         | 502212      | Footplate Kit Angle Adjustable w/ Heel Loop for Front Mount Hanger 18-24 Wide Right<br><i>Heel Loop with attaching hardware is included but not pictured</i> | 1        |
| 2e, 2f, 3a, 3b, 4-13 | 502213      | Footplate Kit Angle Adjustable w/ Heel Loop for Front Mount Hanger 18-24 Wide Pair<br><i>Heel Loop with attaching hardware is included but not pictured</i>  | 1        |
| 1a                   | 001304      | Footplate Angle Adjustable 10-11" Wide CAT/TILT Left   | 1        |
| 1b                   | 001305      | Footplate Angle Adjustable 10-11" Wide CAT/TILT Right  | 1        |
| 1c                   | 001306      | Footplate Angle Adjustable 12-13" Wide CAT/TILT Left   | 1        |
| 1d                   | 001307      | Footplate Angle Adjustable 12-13" Wide CAT/TILT Right  | 1        |
| 2a                   | 000105      | Footplate Angle Adjustable 14-15" Wide CAT/TILT Left (Std ELR Right)   | 1        |
| 2b                   | 000106      | Footplate Angle Adjustable 14-15" Wide CAT/TILT Right (Std ELR Left)   | 1        |
| 2c                   | 000107      | Footplate Angle Adjustable 16-17" Wide CAT/TILT Left (Std ELR Right)   | 1        |
| 2d                   | 000108      | Footplate Angle Adjustable 16-17" Wide CAT/TILT Right (Std ELR Left)   | 1        |
| 2e                   | 000109      | Footplate Angle Adjustable 18-24" Wide CAT/TILT Left (Std ELR Right)   | 1        |
| 2f                   | 000110      | Footplate Angle Adjustable 18-24" Wide CAT/TILT Right (Std ELR Left)   | 1        |
| 3a                   | 000048      | Footplate Angle Adj Casting 1" Right   | 1        |
| 3b                   | 000050      | Footplate Angle Adj Casting 1" Left  | 1        |
| 4                    | 100502      | Angle Adj Footplate Clamp 2"   | 1        |
| 5                    | 000055      | Saddle 1"  | 1        |
| 6                    | 000428      | Wear Washer  | 1        |
| 7                    | 101455      | M6 Belleville Washer (.252 x .551 x .050)  | 1        |
| 8                    | 101124      | M6 x 50 Low SHCS BLK ZC  | 1        |
| 9                    | 100662      | M6 x 25 FSHCS BLK ZC   | 2        |
| 10                   | 100746      | M6 Flat Washer Blk Zn  | 1        |
| 11                   | 100558      | M6 Nyl Ins Domed Cap L/N Zc  | 1        |
| 12                   | 100658      | M6 Nylock Nut Blk Zn   | 2        |
| 13                   | 102072      | Washer Nylon .234 ID x .406 OD x .062 Thick  | 1        |