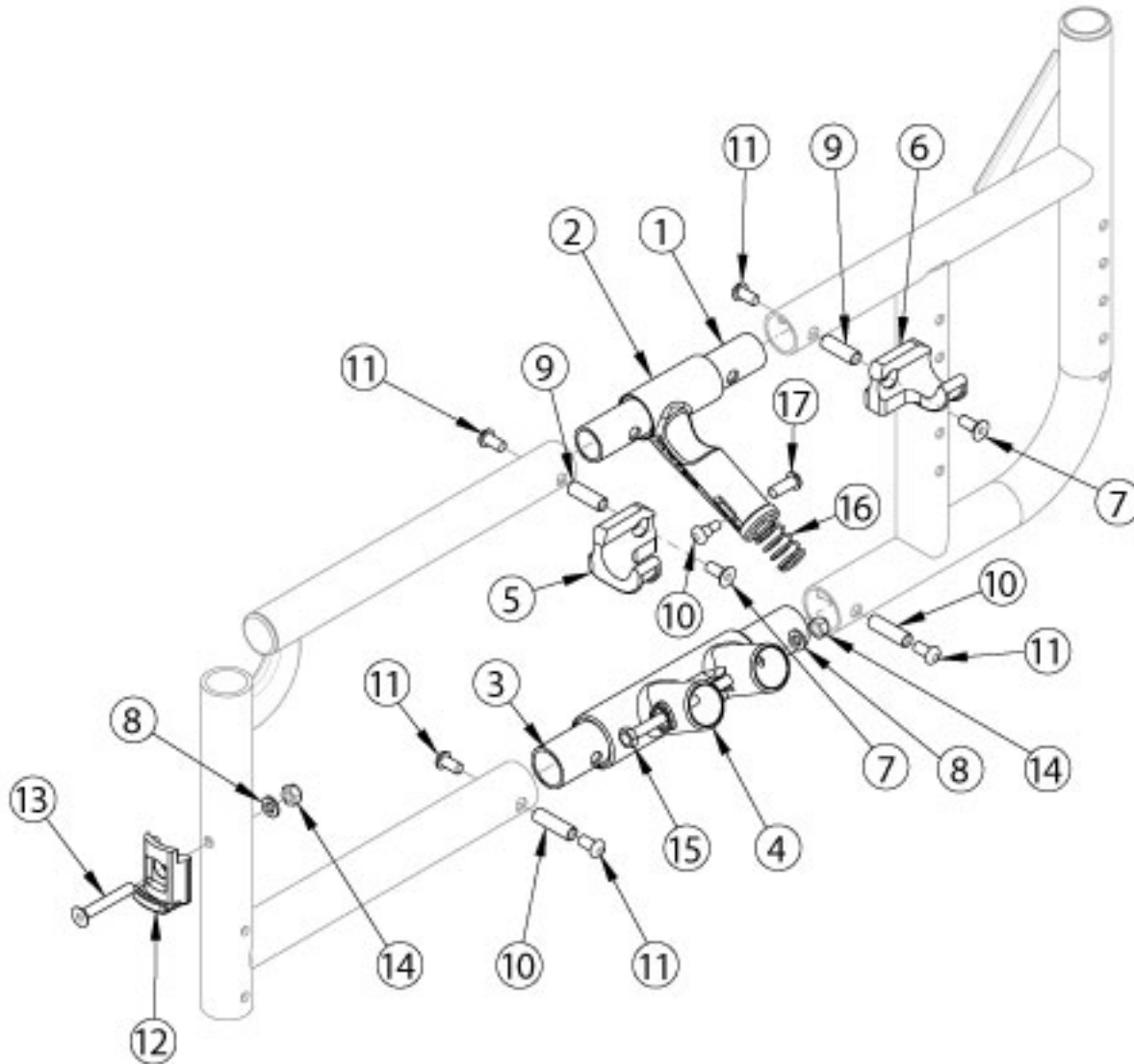


Catalyst 5 Side Frame Assembly - Open Seating (Seating System)



Upper Pivot Assemblies are based on seat width

Item Number	Part Number	Description	Quantity	Retail
2b, 16-18	500024	Upper Pivot Assembly 14" Width <i>This kit also contains the 14" slider link (not pictured)</i>	1	\$44.77
2a, 16-18	500025	Upper Pivot Assembly 15" Width <i>This kit also contains the 15" slider link (not pictured)</i>	1	\$44.77
2a, 16-18	500026	Upper Pivot Assembly 16" Width <i>This kit also contains the 16" slider link (not pictured)</i>	1	\$44.77
2a, 16-18	500027	Upper Pivot Assembly 17" Width	1	\$44.77

Item Number	Part Number	Description	Quantity	Retail
		<i>This kit also contains the 17" slider link (not pictured)</i>		
2a, 16-18	500028	Upper Pivot Assembly 18" Width <i>This kit also contains the 18" slider link (not pictured)</i>	1	\$44.77
2a, 16-18	500029	Upper Pivot Assembly 19" Width <i>This kit also contains the 19" slider link (not pictured)</i>	1	\$44.77
2a, 16-18	500030	Upper Pivot Assembly 20" Width <i>This kit also contains the 20" slider link (not pictured)</i>	1	\$44.77
2a, 16-18	501479	Upper Pivot Assembly 21/22" Width <i>This kit also contains the 21/22" slider link (not pictured)</i>	1	\$44.77
1	000011	Frame Connector Upper CAT	1	\$4.58
3	000009	Frame Connector Lower CAT	1	\$4.58
4a	000001	Lower Frame Pivot CAT <i>Used with round style cross braces effective prior to 6/15/16</i>	1	\$27.71
4b	002806	Lower Frame Pivot CAT <i>Used with oval style cross braces effective 6/15/16</i>	1	\$10.51
5	000960R	Seat Hook Open Frame Right Front Frame / Left Rear Frame, Catalyst	1	\$21.75
6	000960L	Seat Hook Open Frame Left Front Frame / Right Rear Frame, Catalyst	1	\$21.75
7	101594	M6 x 14 CLS10.9 DIN7991 FSHCS BLKZC w/Patch	2	\$2.10
8	100746	M6 Flat Washer Blk Zn	2	\$1.58
9	000065	M6 x 23.68 Threaded Barrel	2	\$4.13
10	000066	M6 x 27 Threaded Barrel	2	\$4.46
11	100667	M6 x 12 BTN SHCS BLKZC w/Patch	6	\$1.58
12	000336	Latch Block	1	\$37.52
13	101819	M6 x 40 FHCS Blk Zn	1	\$1.05
14	100658	M6 Nylock Nut Blk Zn	2	\$1.05
15	100704	M6 x 90 CLS8.8 DIN931 HHCS ZC	1	\$1.58