

# HIGHLY ADJUSTABLE TO ELEVATE YOUR MOBILITY

The Quickie® 5<sup>R</sup> is designed to deliver superior rigid wheelchair performance day after day. As you and your environment evolve, or as you refine your riding capabilities, the 5<sup>R</sup>'s frame and components adjust to elevate your mobility.



LESLIE  
Rolling in  
the *fab lane*  
24/7/365!  
Atlanta, GA

5<sup>R</sup>



## OPEN FRAME DESIGN

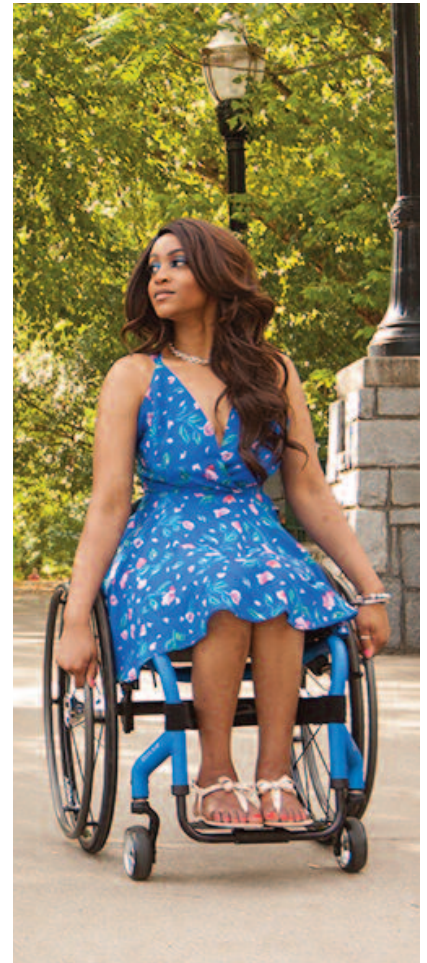
The Quickie 5<sup>R</sup>'s open frame takes the ride quality and geometry that you love about the GT and improves upon it with a swept-back hydro-formed caster design for added style and a smooth ride.

The 5<sup>R</sup> offers two frame options. The **Classic** features a traditional frame length for maximum stability. The shortened **Performance** frame length offers maximum responsiveness.



## NEW AXLE PLATE DESIGN

The 5<sup>R</sup>'s swept-back axle plate design isn't just for looks. It is also incredibly quick to adjust and is available in two lengths to ensure you are getting the adjustments you need without adding extra weight.





### Quickie Xtender Power Assist

Developed by Quickie and Yamaha, the Xtender features motorized rear wheels that increase the force you apply to the handrims by *four times*.



### XTR Suspension

The XTR Suspension Frame helps you fearlessly conquer curbs, bumps, and tough terrain. Add Mountain wheels, Knobby tires, wide casters, and Frog Legs suspension caster forks for the ultimate off-road wheelchair experience.

Aztec Gold	Black	Black Cherry	Black Opal
Blue Opal	Candy Blue	Candy Purple	Candy Red
Electric Blue	Evergreen	Glow	Green Apple
Hot Sparkle Pink	Mauve Pink	Rootbeer	Sparkle Silver
Sunrise Orange	Yellow	Titanium Color Paint	Matte Black
Matte Black Cherry	Matte Purple	Matte Electric Blue	Matte Evergreen
Desert Camo	Mossy Oak Camo	Stars and Stripes	Zebra™

\*Black Zebra Kolorfusion™ pattern is available on any base color. Shown here on Candy Blue base color.

### Available Colors

The color options shown are for reference only. They are not intended as accurate representations. Refer to the Quickie Color Brochure or Quickie Color Ring for representations of Quickie colors.



### Custom-Colored JAY® J3™ Backs

Add a pop of matching or contrasting color to your 5<sup>R</sup> with a painted JAY J3 back. Choose from any of the standard or matte frame colors available on Quickie wheelchairs, and we will paint your J3 back at no additional charge.

THE 5<sup>R</sup>  
GIVES YOU  
ACCESS TO THE  
PREMIUM  
OPTIONS  
YOU WANT TO  
ELEVATE  
YOUR MOBILITY



# COMPLETE OPTION MIX FOR FUNCTION & STYLE

The 5<sup>R</sup> offers our greatest mix of rigid wheelchair options, including handrim options, HCPCS-coded tension-adjustable upholstery, single-sided forks, and colored components.



**built4me**

Our Built-4-Me Team is dedicated to creating product customizations beyond what is listed on our product order forms. Experts in the engineering and manufacturing of custom rehab products will listen to your specific requests and build a chair as individual as your fingerprint!

#### Customizations include:

- Chrome finished frame
- Chrome wheels
- Black cherry accents  
*(Shown on Quickie Q7 to right)*

*\*Conforms with ANSI/RESNA WC-19 standards. Please refer to Quickie® & Zippie® WC-19 Transit Securement Supplement (MK-100072) for additional information. Supplement is available for download at [www.SunriseMedical.com](http://www.SunriseMedical.com).*

## 5<sup>R</sup> SPECS

HCPCS Code: K0005

Overall Weight: 21.5 lbs

Transport Weight: 12.9 lbs

Weight Capacity: 265 lbs

Seat Width: 12" to 20"

Seat Depth: 12" to 20"

Center of Gravity  
Adjustment:

-1.5" to 4"

Back Angle Adjustment:

Fore (-) 17° to Aft (+) 8°

Front Seat Height:

16" to 21"

Rear Seat Height:

13" to 20"

Transit Approved: Yes\*

Warranty:

Limited/Lifetime



Sunrise Medical (US) LLC, Fresno, CA 93727  
MK-100136 Rev.C © 05.2017

800.333.4000 [www.SunriseMedical.com](http://www.SunriseMedical.com)

