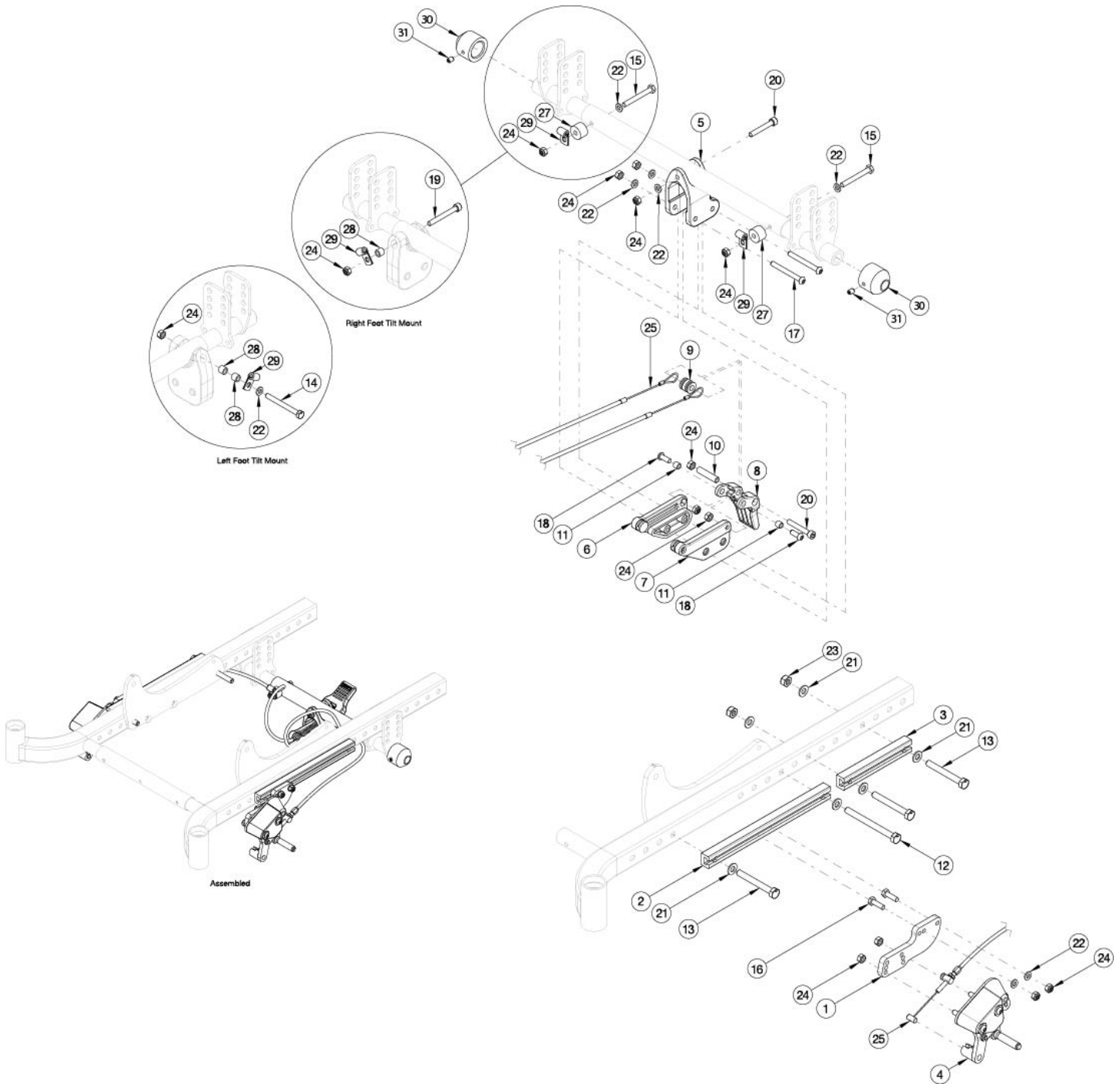


# CR45 Attendant Foot Lock



*If retrofitting with 12" Mag, 16" Mag, or Maxx Mag present longer quick release axles are required*

Item Number	Part Number	Description	Quantity
1-2, 4a, 4b, 5-11, 14-20, 22, 24, 25a, 26-31	116306	Attendant Foot Lock, 12"-16" Wheels	1
1,4a,4b,5-11,14-21,23, 30, 31	116302	Attendant Foot Lock, 12"-16" Wheels w/ Reclining Backrest	1

Item Number	Part Number	Description	Quantity
1, 4a, 4b, 5-11, 14-20, 22, 24, 25b, 26-29	116307	Attendant Foot Lock, 20"-24" Wheels <i>Can be used with all backrests. If retrofitting with Maxx Mag present Spacer and Set Screw are required.</i>	1
1, 4a, 16, 22, 24, 26	116304	Attendant Foot Lock, L	1
1, 4b, 16, 22, 24, 26	116303	Attendant Foot Lock, R	1
5-11, 17-18, 20, 22, 24, 25a, 27-28	116305	Foot Lock Pedal Assy, 12"-16" Wheel	1
5-11, 17-18, 20, 22, 24, 25b, 27-28	116330	Foot Lock Pedal Assy, 20-24" Wheel	1
1	112507	Wheel Lock Mount	2
2	112505	Wheel Lock Channel, CR45	2
3	112506	Short Wheel Lock Channel, CR45	1
4a	111591	Wheel Lock Follower Assembly without Mount, Left	1
4b	111592	Wheel Lock Follower Assembly without Mount, Right	1
5	112508	Foot Lock Mount Bracket	1
6	111441	Mount, Pedal, Foot Lock, R	1
7	111442	Mount, Pedal, Foot Lock, L	1
8	111440	Pedal, Foot Lock	1
9	111443	Spool, Foot Lock	1
11	111445	Spacer, .313ODx.243IDx.270LG, SS	2
12	101832	M8 x 90 HHCS Blk Zn	1
13	101829	M8 x 65 HHCS Blk Zn	2
14	100677	M6 x 60 CLS10.9 DIN931 HHCS ZC	1
15	101826	M6 x 50 HHCS Blk Zn	1
16	101823	M6 x 20 HHCS Blk Zn	4
17	101125	M6 x 55 BTN SHCS BLKZC	2
18	102634	M6 X 1.0 X 16 BHCS BLK ZC	2
19	102473	M6 X 50 CLS12.9 SHCS BLK ZC	1
20	101847	M6 x 40 SHCS Blk Zn	2

Item Number	Part Number	Description	Quantity
21	101858	Washer Flat M8 Blk Zn	6
22	100746	M6 Flat Washer Blk Zn	13
23	100659	M8 Nylock Nut Blk Zn	2
24	100658	M6 Nylock Nut Blk Zn	16
25a	111436	Cable, Foot Lock, Short	2
25b	111437	Cable, Foot Lock, Long	2
26	115743	Wheel Lock Retaining Grommet	2
27	102047	Spacer, .25ID x .75OD x .50LG	1
28	002086	Spacer, .38ODx.24IDx.31LG	1
29	001239	P-Clip 3/16"	2
30	112503	Spacer, Wheel, .47" <i>Required if retrofitting when 12" Mag, 16", or Maxx Mags are present</i>	2
31	102090	M6 Set Screw Flat Point <i>Required if retrofitting when 12" Mag, 16", or Maxx Mags are present</i>	2