

# JAY<sup>®</sup>

## LITE

- ≡ The lightest cushion in its class, providing the perfect complement to an ultra lightweight wheelchair.



#### Pre-contouring



Provides pressure reduction, positioning and stability

#### Firmness Layering



Redistributes pressure while increasing stability and comfort

#### Positioning Capability



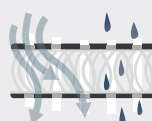
Provides proper positioning for postural needs

#### Tension Reduction



Tension-reducing materials maintain superior pressure relief

#### Microclimatic Material



Allows the passage of air, heat and water from the user

To learn more about JAY Science of Seating please visit the JAY Lite product page at [www.sunrisemedical.com](http://www.sunrisemedical.com)

# JAY LITE

## ≡ The JAY Lite was designed through the careful consideration of the science behind seating.

The result: A cushion that features superior pressure distribution, microclimatic heat and moisture dissipation, and optimal stability in an extremely lightweight cushion. The key features of the JAY Lite that provide these great benefits include 3DX™ microclimatic spacer fabric, airflow base, and OptiWell™ pelvic loading area. It's the perfect cushion for users on the go.

### Extremely Lightweight:

- Product Weight: 1.71 lbs (16 x 18 Skin Protection cushion)  
1.74 lbs (16 x 18 Skin Protection and Positioning cushion)
- Perfect complement to ultra lightweight aluminum and titanium wheelchairs

### Superior Pressure Distribution:

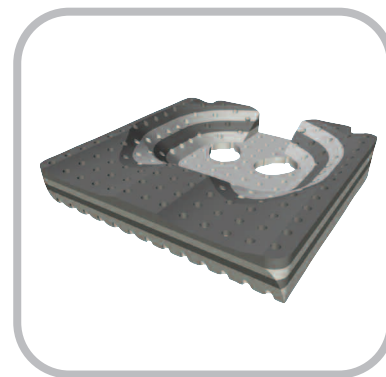
- Based on anthropometric data, the OptiWell™ pelvic loading area is optimally shaped and sized to evenly distribute pressure under the pelvis
- Ischial cutouts and scooped reticulated foam insert minimize compression and reaction forces when the cushion is loaded

### Microclimatic Heat and Moisture Dissipation:

- The 3DX™ Microclimatic Spacer Fabric and airflow base provide ventilation and airflow beneath the user
- Protects the skin against heat and moisture build-up

### Quickie Bundling:

- The JAY Lite can be ordered and shipped complete with a variety of Quickie manual and power chairs
- This helps to save time and money!



## SPECIFICATIONS

JAY®

SADMERC Code	E2603/4 – Skin Protection E2607/8 – Skin Protection and Positioning
Weight	1.7 lbs. (16 x 18)
Product Width	14" – 24"
Product Length	14" – 24"
Product Height	E2603/4: 3.4" E2607/8: 4.5"
Weight Capacity	250 lbs.
Cover Options	Microclimatic 3DX™ Spacer Fabric