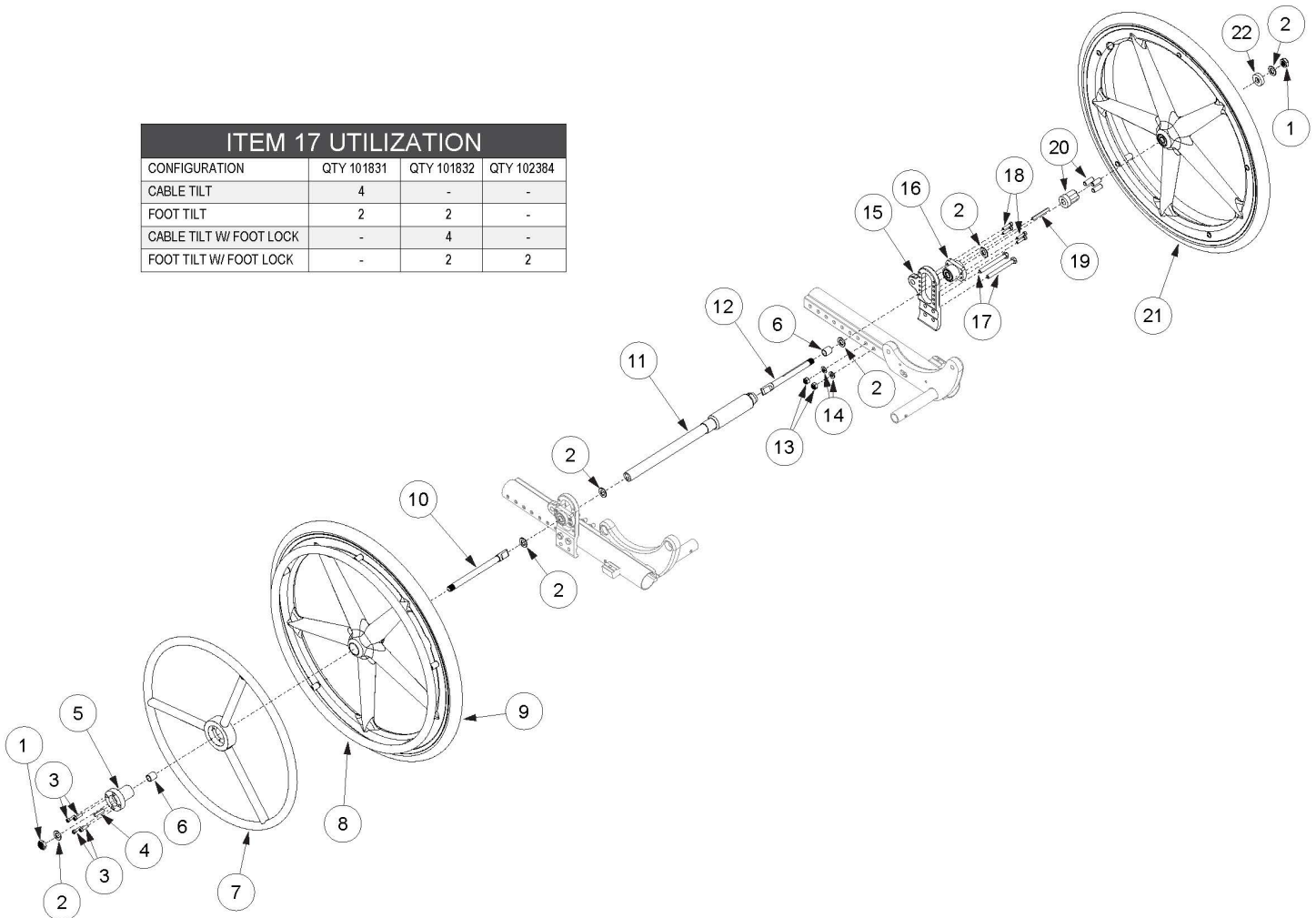


(Discontinued) Focus CR One Arm Drive Blade Style

ITEM 17 UTILIZATION			
CONFIGURATION	QTY 101831	QTY 101832	QTY 102384
CABLE TILT	4	-	-
FOOT TILT	2	2	-
CABLE TILT W/ FOOT LOCK	-	4	-
FOOT TILT W/ FOOT LOCK	-	2	2



One Arm Drive Kits do not include rear tires. If retrofitting from Hex One Arm Drive, you will need a new drive shaft, axles (#10 and #12), One Arm Drive Spacer (#6) and installation instruction DCN0505. If changing wheel size and the Attendant Foot Lock is present, a new linkage may be required; reference the corresponding Focus CR Attendant Foot Lock page.

Item Number	Part Number	Description	Quantity
15a, 15b, 16	003212	One Arm Drive Focus Axle Plate Assembly PAIR	1
1	101459	1/2-20 NTE JAM NYL INS L/N BLK ZC	2
3	104056	10-32 X 3/4" Socket Head Cap Screw	4
5	108083	Hub Handrim, One Arm Drive	1
6	107564	One Arm Drive Spacer	2
7c	003198	One Arm Drive Handrim Aluminum 24"	1
8a	101897	Handrim Aluminum Anodized 5 Rivet Nut 20"	1

Item Number	Part Number	Description	Quantity
		<i>Does not include attaching hardware. Quote 502171 if hardware is needed.</i>	
8b	101898	Handrim Aluminum Anodized 5 Rivet Nut 22" <i>Does not include attaching hardware. Quote 502171 if hardware is needed</i>	1
11g	107571	One Arm Drive - Blade Drive Shaft 17.67"	1
11i	108072	One Arm Drive - Blade Drive Shaft 19.67"	1
12	107574	One Arm Drive - Blade Style Axle 5.03"	1
13	100659	M8 Nylock Nut Blk Zn	4
14	101858	Washer Flat M8 Blk Zn	4
17a	101831	M8 x 80 HHCS Blk Zn	4
17b	101832	M8 x 90 HHCS Blk Zn	4
17c	102384	M8 x 100 HHCS Blk Zc Part THD	2
18	101843	M5 x 20 SHCS Blk Zn	8

Focus Blade OAD Drive Shaft Configurations Guide

Focus Seat Width	Part No.	Compressed Drive Shaft Length	Extended Drive Shaft Length
14"	107565	10.12"	11.72"
15"	107566	11.12"	12.72"
16"	107567	12.22"	13.82"
17"	107568	13.07"	14.67"
18"	107569	14.07"	15.67"
19"	107570	15.07"	16.67"
20"	107571	16.07"	17.67"
21"	107572	17.07"	18.67"
22"	108072	18.07"	19.67"