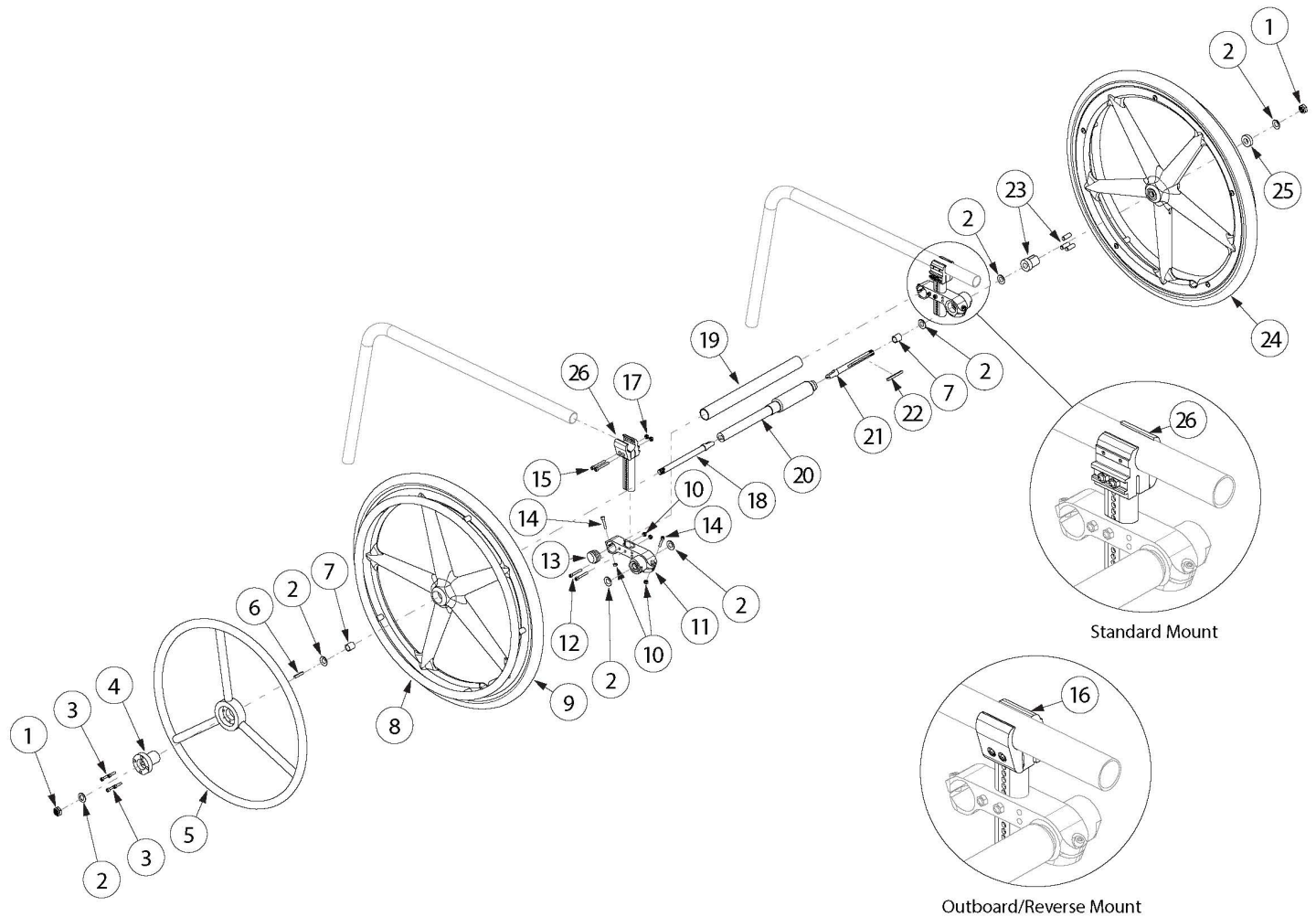


(Discontinued) Klik One Arm Drive Blade Style



One Arm Drive Kits do not include rear tires. If retrofitting to add the One Arm Drive, new rear towers are required in addition to the complete One Arm Drive system. If retrofitting from Hex One Arm Drive, you will need a new drive shaft, axles (#18 and #21), One Arm Drive Spacer (#7), Axle Mount Assemblies (#11) and installation instruction DCN0504. Reference Drive Shaft Chart to determine which drive shaft is needed for desired Rear Wheel Spacing. See order form for Rear Wheel Spacing restrictions.

Item Number	Part Number	Description	Quantity
1-4, 6, 7, 18, 21b, 22	108079	Blade One Arm Drive Axle Assembly Short <i>Used if 11" wide or if 12" wide with rear wheel spacing of 1.25" or 13" wide with rear wheel spacing of .75"</i>	1
1	101459	1/2-20 NTE JAM NYL INS L/N BLK ZC	2
3	104056	10-32 X 3/4" Socket Head Cap Screw	4
4	108083	Hub Handrim, One Arm Drive	1
5c	003198	One Arm Drive Handrim Aluminum 24"	1
7	107564	One Arm Drive Spacer	2

Item Number	Part Number	Description	Quantity
		<i>Qty 1 always used on drive side. Qty 2 used with standard 5.03" axle (part number 107574)</i>	
8a	101897	Handrim Aluminum Anodized 5 Rivet Nut 20"	1
8b	101898	Handrim Aluminum Anodized 5 Rivet Nut 22"	1
10	100657	M5 Nylock Nut Blk Zn	8
11	108074	One Arm Drive Rogue/Clik Axle Mount 0 Degree Camber PAIR	1
12	101734	M5 x 35 SHCS BLK ZC	4
13	100532	Tube End Plug 1 1/8"	2
14	101717	M5 x 25 SHCS BLK ZC	4
15	102619	M5 X 40 SHCS BLK ZC	4
16	003366	One Arm Drive Tower Clamp, Outboard Mount, Clik <i>Reference Clik One Arm Drive (Blade) - Drive Shaft Chart for configurations where used</i>	2
17	103056	M5 Cap Nut Black Zinc	4
19a	003369	One Arm Drive Camber Tube 11" Kit, Clik / Rogue XP	1
19b	003370	One Arm Drive Camber Tube 12" Kit, Clik / Rogue / Rogue XP	1
19c	003371	One Arm Drive Camber Tube 13" Kit, Clik / Rogue / Rogue XP	1
19d	003372	One Arm Drive Camber Tube 14" Kit, Clik / Rogue / Rogue XP	1
19e	003373	One Arm Drive Camber Tube 15" Kit, Clik / Rogue / Rogue XP	1
19f	003374	One Arm Drive Camber Tube 16" Kit, Clik / Rogue / Rogue XP	1
19g	003708	One Arm Drive Camber Tube 17" Kit, Clik / Rogue / Rogue XP	1
19h	003709	One Arm Drive Camber Tube 18" Kit, Clik / Rogue / Rogue XP	1
20a	107562	One Arm Drive - Blade Drive Shaft 8.72"	1
20b	107563	One Arm Drive - Blade Drive Shaft 9.72"	1
21a	107574	One Arm Drive - Blade Style Axle 5.03"	1
26	111822	Tower Clamp Mount, Clik <i>Reference Clik One Arm Drive (Blade) - Drive Shaft Chart for configurations where used</i>	2

Clik Blade OAD Drive Shaft Configurations Guide

Clik

Clik Seat Width	Wheel Spacing	Part No.	Compressed Drive Shaft Length	Extended Drive Shaft Length
11"	1.5	*#107562	7.12"	8.72"
11"	1.75	~*107562	7.12"	8.72"
12"	1.25	*107562	7.12"	8.72"
12"	1.5	107562	7.12"	8.72"
12"	1.75	~107562	7.12"	8.72"
13"	1, 1.25	^107562	7.12"	8.72"
13"	1.5	107563	8.12"	9.72"
13"	1.75	~107563	8.12"	9.72"
14"	1, 1.25	^107563	8.12"	9.72"
14"	1.5	107032	9.14"	10.74"
14"	1.75	~107032	9.14"	10.74"
15"	1, 1.25	^107032	9.14"	10.74"
15"	1.5	107565	10.12"	11.72"
15"	1.75	~107565	10.12"	11.72"
16"	1, 1.25	^107565	10.12"	11.72"
16"	1.5	107566	11.12"	12.72"
16"	1.75	~107566	11.12"	12.72"
17"	1, 1.25	^107566	11.12"	12.72"
17"	1.5	107567	12.22"	13.82"
17"	1.75	~107567	12.22"	13.82"
18"	1, 1.25	^107567	12.22"	13.82"
18"	1.5	107568	13.07"	14.67"
18"	1.75	~107568	13.07"	14.67"

*For this configuration, do not use spacer 107564 and replace axle 107574 with axle 108073.

~For this configuration, tower assemblies are to be mounted outboard of the frame.

#For this configuration, camber plugs require adjustment during drive shaft installation.

^1" wheel spacing not available with offset frame.

NOTE: Tower assemblies must be mounted outboard of the frame when offset frames are used.

Clik with T-Arms

Clik Seat Width	Wheel Spacing	Part No.	Compressed Drive Shaft Length	Extended Drive Shaft Length
11"	1.5	*107562	7.12"	8.72"
11"	1.75	*107562	7.12"	8.72"
12"	1.5	107562	7.12"	8.72"
12"	1.75	107562	7.12"	8.72"
13"	1.5	107563	8.12"	9.72"
13"	1.75	107563	8.12"	9.72"
14"	1.5	107032	9.14"	10.74"
14"	1.75	107032	9.14"	10.74"
15"	1.5	107565	10.12"	11.72"
15"	1.75	107565	10.12"	11.72"
16"	1.5	107566	11.12"	12.72"
16"	1.75	107566	11.12"	12.72"
17"	1.5	107567	12.22"	13.82"
17"	1.75	107567	12.22"	13.82"
18"	1.5	107568	13.07"	14.67"
18"	1.75	107568	13.07"	14.67"

*For this configuration, do not use spacer 107564 and replace axle 102908 with axle 108073.

Note: Tower assemblies are to be mounted outboard of the frame when T-Arms are used.