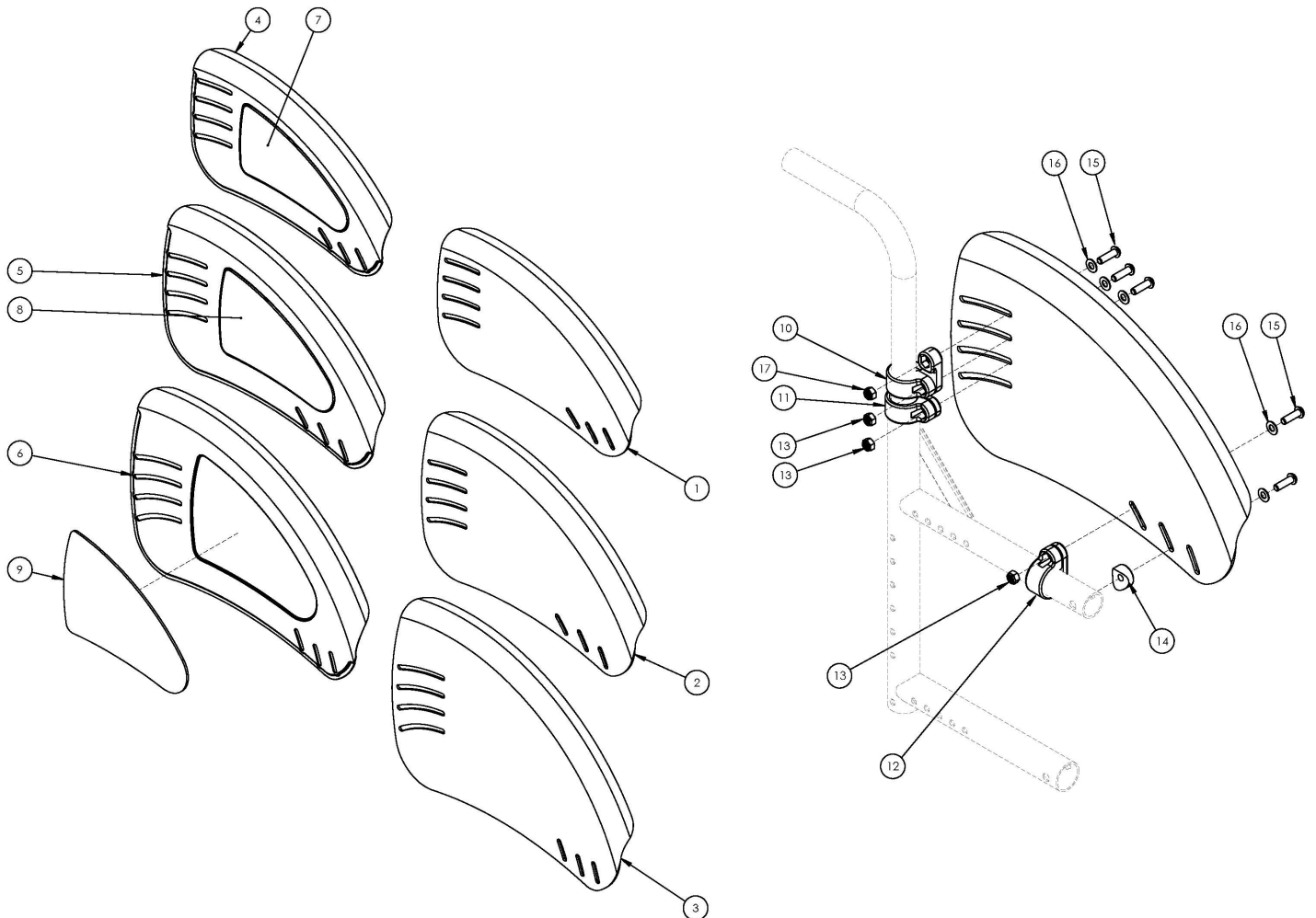


# Catalyst 5VX Fixed Mount Fender Side Guard



Some configurations may require the wheel locks to be reversed or use the extended wheel lock mount bar, part number 001321. If the chair has a long rear frame and a serial number prior to C5053765, C5HD003546, or CVX0091137, a new long rear frame is required.

Item Number	Part Number	Description	Quantity
10 - 17	506290	Fixed Mount Fender Side Guard Mounting Hardware Kit, Catalyst <i>Contains hardware for a pair of Fender Side Guards</i>	1
4a, 7a	506291	Fixed Mount Aluminum Fender Side Guard w/Foam Insert, Small, Right	1
4b, 7b	506292	Fixed Mount Aluminum Fender Side Guard w/Foam Insert, Small, Left	1
5a, 8a	506293	Fixed Mount Aluminum Fender Side Guard w/Foam Insert, Medium, Right	1
5b, 8b	506294	Fixed Mount Aluminum Fender Side Guard w/Foam Insert, Medium, Left	1
6a, 9a	506295	Fixed Mount Aluminum Fender Side Guard w/Foam Insert, Large, Right	1

Item Number	Part Number	Description	Quantity
6b, 9b	506296	Fixed Mount Aluminum Fender Side Guard w/Foam Insert, Large, Left	1
4a, 4b, 7a, 7b	506297	Fixed Mount Aluminum Fender Side Guard w/Foam Insert, Small, PAIR	1
5a, 5b, 8a, 8b	506298	Fixed Mount Aluminum Fender Side Guard w/Foam Insert, Medium, PAIR	1
6a, 6b, 9a, 9b	506299	Fixed Mount Aluminum Fender Side Guard w/Foam Insert, Large, PAIR	1
4a, 4b, 7a, 7b, 10-17	506300	Fixed Mount Aluminum Fender Side Guard Assembly, Small, PAIR, Catalyst	1
5a, 5b, 8a, 8b, 10-17	506301	Fixed Mount Aluminum Fender Side Guard Assembly, Medium, PAIR, Catalyst	1
6a, 6b, 9a, 9b, 10-17	506302	Fixed Mount Aluminum Fender Side Guard Assembly, Large, PAIR, Catalyst	1
1a, 1b	506303	Fixed Mount Carbon Fiber Fender Side Guard, Small, PAIR	1
2a, 2b	506304	Fixed Mount Carbon Fiber Fender Side Guard, Medium, PAIR	1
3a, 3b	506305	Fixed Mount Carbon Fiber Fender Side Guard, Large, PAIR	1
1a, 1b, 10-17	506306	Fixed Mount Carbon Fiber Fender Side Guard Assembly, Small, PAIR, Catalyst	1
2a, 2b, 10-17	506307	Fixed Mount Carbon Fiber Fender Side Guard Assembly, Medium, PAIR, Catalyst	1
3a, 3b, 10-17	506308	Fixed Mount Carbon Fiber Fender Side Guard Assembly, Large, PAIR, Catalyst	1
1a	003619	Fender, Carbon Fiber, Solid Mount, Small, Right	1
1b	003620	Fender, Carbon Fiber, Solid Mount, Small, Left	1
2a	003621	Fender, Carbon Fiber, Solid Mount, Medium, Right	1
2b	003622	Fender, Carbon Fiber, Solid Mount, Medium, Left	1
3a	003623	Fender, Carbon Fiber, Solid Mount, Large, Right	1
3b	003624	Fender, Carbon Fiber, Solid Mount, Large, Left	1
4a	003601	Fender, Aluminum, Solid Mount, Small, Right	1
4b	003602	Fender, Aluminum, Solid Mount, Small, Left	1
5a	003603	Fender, Aluminum, Solid Mount, Medium, Right	1
5b	003604	Fender, Aluminum, Solid Mount, Medium, Left	1
6a	003605	Fender, Aluminum, Solid Mount, Large, Right	1
6b	003606	Fender, Aluminum, Solid Mount, Large, Left	1
7b	003607	Fender Foam Insert, Small, Pair	1
8b	003609	Fender Foam Insert, Medium, Pair	1

Item Number	Part Number	Description	Quantity
9b	003611	Fender Foam Insert, Large, Pair	1
10a	003592	Fender Clamp, 0.875" ID, Right <i>Used with Standard Backrests; Mounted to back post</i>	1
10b	003591	Fender Clamp, 0.875" ID, Left <i>Used with Standard Backrests; Mounted to back post</i>	1
11	003594	Fender Clamp, 1.125" ID <i>Used with Angle Adjustable Backrest; Mounted to rear frame</i>	1
12	003593	Fender Clamp, 1.0" ID <i>Used when mounting to frame</i>	1
13	100658	M6 Nylock Nut Blk Zn	2
14	004436	Fender Side Guard Saddle <i>Used when mounting to frame</i>	1
15	102623	M6 x 20 BHCS BLK ZC	3
16	101853	M6 Washer Blk Zn	3
17	103960	M6 SS BLK Oxide Standard Nut	1

# Determining Fender Panel & Post Size For Your Chair

## CATALYST

Fender side guard panel size needed to fit a Catalyst is driven by the height of the tire over the seat. To calculate this, use the formula listed below. Once you have the output of the formula use the reference matrix to find the appropriate panel and post sizes. For information on Wheel Outside Diameter reference the Wheel Outside Diameter chart in the parts manual.

**Formula:** Wheel Outside Diameter (OD) – Rear Seat Height = Tire Height over seat

### Reference Matrix:

Tire Height	Panel and Post Size
Tire Height = less than 6"	Small Fender/Short Post
Tire Height = 6-8"	Medium Fender/Medium Post
Tire Height = greater than 8"	Large Fender/Tall Post

## ADULT & PEDIATRIC RIGID

Fender side guard panel size and profile is driven by the height of the tire over the seat frame and Center of Gravity (CG) position. To calculate this, use the formula and CG rules listed below. Once you have the output of those use the reference matrix to find the appropriate panel and post size.

**Formula:** Wheel Outside Diameter (OD) – Rear Seat Height = Tire Height over seat

**CG Rules:** Axle CG position = distance from axle to backrest tube

*Ethos & Rogue:* CG position  $\leq 3.0$ " use Short Fenders & if CG is  $\geq 3.25$ " use Standard Fenders

*Tsunami:* CG position  $\leq 3.25$ " use Short Fenders & if CG is  $> 3.25$ " use Standard Fenders

*Pediatric Rigid:* CG position  $\leq 3.25$ " use Short Fenders & if CG is  $> 3.25$ " use Standard Fenders

### Reference Matrix:

Tire Height	Panel and Post Size
Tire Height = less than 7"	Small Fender/Short Post
Tire Height = 7-8.5"	Medium Fender/Medium Post
Tire Height = greater than 8.5"	Large Fender/Tall Post



# Wheel & Tire Outside Diameter Measurement Reference

Size	Tire Description	Outside Diameter
18"	Street Pneumatic 1-3/8"	18.9
18"	Full Profile Poly 1-3/8"	18.5
18"	Pneumatic w/Airless Insert 1-3/8"	18.8
18"	Low Profile Poly 1"	17.7
20"	Street Pneumatic 1-3/8"	20.7
20"	Full Profile Poly 1-3/8"	20.2
20"	Pneumatic w/Airless Insert 1-3/8"	20.5
20"	Low Profile Poly 1"	19.3
20"	Sentinel Solid 1"	19.6
20"	High Pressure 1"	20.3
20"	SHOX	19.6
22"	Street Pneumatic 1-3/8"	22.5
22"	Full Profile Poly 1-3/8"	22.3
22"	Pneumatic w/Airless Insert 1-3/8"	22.4
22"	Low Profile Poly 1"	21.4
22"	Sentinel Solid 1"	21.9
22"	High Pressure 1"	22.3
22"	SHOX	22
22"	Mountain 2"	24.1
24"	Street Pneumatic 1-3/8"	24
24"	Full Profile Poly 1-3/8"	23.6
24"	Pneumatic w/Airless Insert 1-3/8"	23.9
24"	Schwalbe HS-127 1-3/8"	24
24"	Euro Trek Knobby 1-3/8"	24.1
24"	Low Profile Poly 1"	22.8
24"	Sentinel Solid 1"	23.3
24"	High Pressure 1"	23.6
24"	Schwalbe One 1"	23.8
24"	Schwalbe Marathon Plus EVO 1"	24
24"	SHOX	23.3
24"	Schwalbe Downtown 1"	23.6
24"	Mountain 2"	25.6
25"	Sentinel Solid 1"	24
25"	High Pressure 1"	24.3
25"	Schwalbe One 1"	24.3
25"	Schwalbe Marathon Plus EVO 1	24.4
25"	SHOX	24.1
25"	Mountain 2"	26
26"	Street Pneumatic 1-3/8"	26
26"	Full Profile Poly 1-3/8"	25.8
26"	Pneumatic w/Airless Insert 1-3/8"	25.8
26"	Sentinel Solid 1"	25.1
26"	High Pressure 1"	25.5
26"	Schwalbe Marathon Plus EVO 1"	25.9
26"	SHOX	25.3

