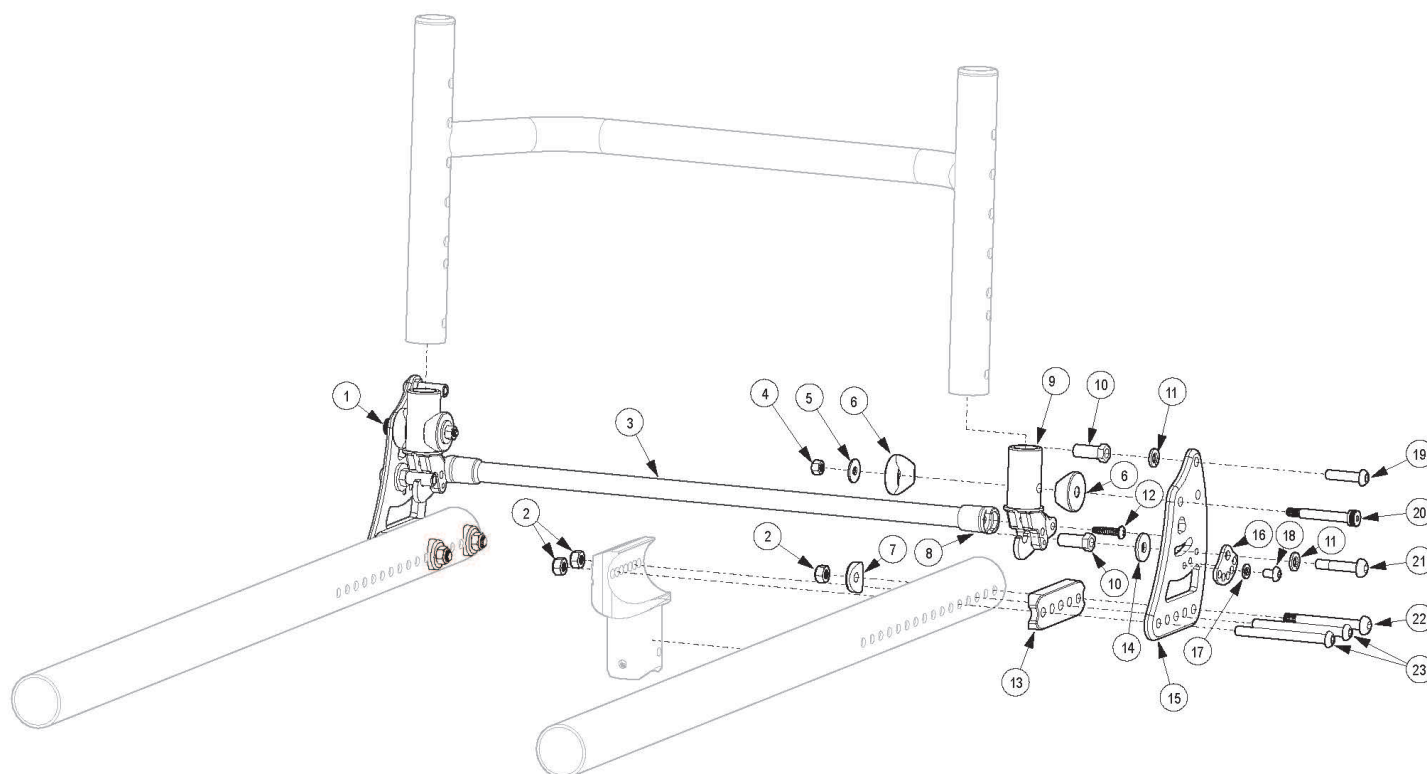


# Rogue Style Locking Backrest Mount and Hardware on Tsunami



*This Rogue Style Locking Backrest is not available with the Tsunami Heavy Duty option <p>*

*If retrofitting to this backrest style, a minimum 1" of adjustable depth is required in addition to new back frames and backrest tubes*

Item Number	Part Number	Description	Quantity	Retail
1a, 2, 4 - 7, 9 - 15a, 16 - 23b	109565	Rogue Style Backrest Bracket Mount Kit, Black Anodized, Tsunami <i>This kit does not contain a release bar or release bar ends. Select appropriate Backrest Release Bar Kit in addition to this kit for a complete assembly.</i>	1	\$336.42
1b, 2, 4 - 7, 9 - 14, 15b, 16 - 23b	109566	Rogue Style Backrest Transit Bracket Mount Kit, Black Anodized, Tsunami <i>This kit does not contain a release bar or release bar ends. Select appropriate Backrest Release Bar Kit in addition to this kit for a complete assembly.</i>	1	\$277.44
3a, 8	107192	Backrest Release Bar Kit, 14" Wide, Black Anodized with Backrest Release Bar Ends	1	\$28.12
3b, 8	107193	Backrest Release Bar Kit, 15" Wide, Black Anodized with Backrest Release Bar Ends	1	\$28.12
3c, 8	107194	Backrest Release Bar Kit, 16" Wide, Black Anodized with Backrest Release Bar Ends	1	\$28.12
3d, 8	107195	Backrest Release Bar Kit, 17" Wide, Black Anodized with Backrest Release Bar Ends	1	\$28.12
3e, 8	107196	Backrest Release Bar Kit, 18" Wide, Black Anodized with Backrest Release Bar Ends	1	\$28.12

Item Number	Part Number	Description	Quantity	Retail
3f, 8	107197	Backrest Release Bar Kit, 19" Wide, Black Anodized with Backrest Release Bar Ends	1	\$28.12
3g, 8	107198	Backrest Release Bar Kit, 20" Wide, Black Anodized with Backrest Release Bar Ends	1	\$28.12
1a	003711	Back Bracket Right, Black Anodized	1	\$55.69
1b	109564	Back Bracket with Transit and Hook Label, Black, Rigid	1	\$26.20
2	100658	M6 Nylock Nut Blk Zn	6	\$1.03
3a	003741	Backrest Release Bar 14" Wide, Black Anodized	1	\$20.60
3b	003742	Backrest Release Bar 15" Wide, Black Anodized	1	\$20.60
3c	003743	Backrest Release Bar 16" Wide, Black Anodized	1	\$20.60
3d	003744	Backrest Release Bar 17" Wide, Black Anodized	1	\$20.60
3e	003745	Backrest Release Bar 18" Wide, Black Anodized	1	\$20.60
3f	003746	Backrest Release Bar 19" Wide, Black Anodized	1	\$20.60
3g	003747	Backrest Release Bar 20" Wide, Black Anodized	1	\$20.60
4	103283	M5 Top Lock Nut BZ	2	\$0.52
5	103022	M5 Washer, Blk Zn	2	\$0.52
6	000055	Saddle 1"	4	\$1.55
7	003716	Saddle 1 3/8" Tube	2	\$1.03
8	003750	Backrest Release Bar End	2	\$2.86
9	003734	Pivot Assembly	2	\$57.23
10	003713	Strike Hex	4	\$5.15
11	101835	M6 Lock Washer Blk Zn	4	\$0.52
12	103279	#8-16 Tri-Lobular Plastic Screw BZ	2	\$0.52
13	003715	Back Saddle 1 3/8" Tube	2	\$2.38
14	101853	M6 Washer Blk Zn	2	\$0.52
15a	003712	Back Bracket Left, Black Anodized	1	\$55.69
15b	109564	Back Bracket with Transit and Hook Label, Black, Rigid	1	\$26.20
16	001762	Arc Adjustment Cam	2	\$3.90
17	102614	M5 Split Lock Washer BLK ZC	2	\$0.52

Item Number	Part Number	Description	Quantity	Retail
18	102621	M5 x 8 BHCS BLK ZC	2	\$0.52
19	101593	M6 x 25 BTN SHCS BLKZC	2	\$1.55
20	103284	M6 x 35 Shoulder Bolt BZ	2	\$4.64
21	103227	M6 x 30 Long Shoulder BHCS BZ	2	\$4.12
22	003232	M6 x 55 BHCS Blk Zc <i>Used when bolt goes through the tower and frame only. Also used when bolt goes through the frame, back bracket and back saddles.</i>	2	\$8.76
23a	107138	M6 x 65, BHCS, P/THD BLZ <i>Used when bolt goes through the tower, frame, back bracket and back saddle</i>	4	\$2.00
23b	101781	M6 x 50mm Partial Thread BHCS Blk ZC <i>Used when bolt goes through the frame, back bracket and back saddle</i>	4	\$1.55