



VOYAGE TRANSIT KIT INSTALLATION MODERATE SEAT



Please read these instructions carefully before beginning the installation. Failure to understand and follow installation instructions may result in injury to installer and/or end user and may void the warranty.
If you have any questions call Sunrise Medical Technical support at 800-333-4000

Parts in this Transit Kit:

- | | | |
|-------------------------------|--|---------------------------|
| 1. Qty 2 Transit Bracket Rear | 7. Qty 2 BH Screw M8x1.25x14 | 13. Qty 2 Transit Sticker |
| 2. Qty 2 Pivot | 8. Qty 4 FH Screw M6x1x16 | |
| 3. Qty 2 Rear Transit Mount | 9. Qty 2 Transit Bracket Front (IL & IR) | |
| 4. Qty 2 Washer Spring | 10. Qty 4 BH Screw M6x1x25 | |
| 5. Qty 2 Nylon Washer Black | 11. Qty 1 Transit Tether Strap | |
| 6. Qty 2 WasherThick | 12. Qty 4 Transit Label | |

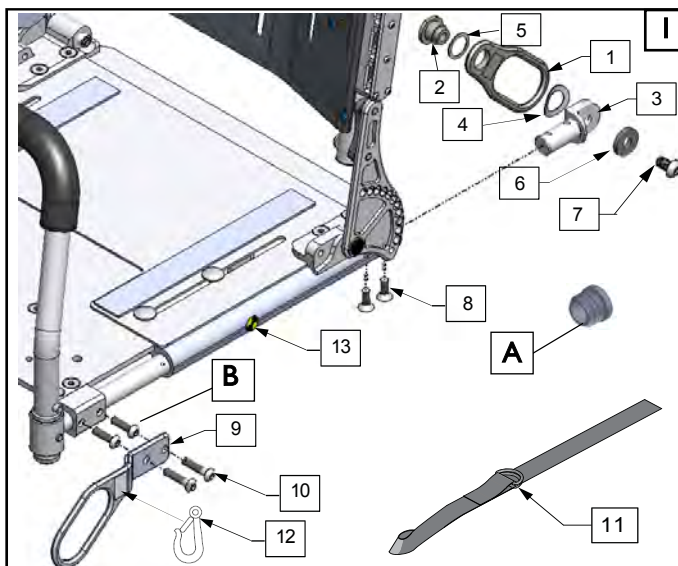
2. Tools needed:

- 4mm hex key
- 5mm hex Key
- Hex Torque Wrench
- Adjustable Crescent Wrench

A. TRANSIT BRACKET INSTALLATION

1. Transit Bracket Installation

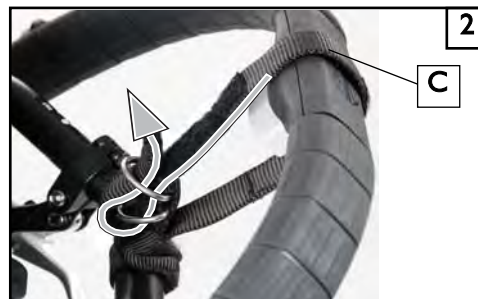
- Remove the seating shell from the Voyage Base and set it on a good work bench or a table for the installation.
- Remove plugs (A) from the rear of the seat and screws (B), discard plugs and screws.
- Locate the Front Transit Brackets, (item 9) which are left and right specific. Install both sides as shown in (figure 1), but do not tighten the hardware.
- Locate the Rear Transit Brackets (item 1), and install both sides as shown, do not tighten the hardware.
- Using a 4mm hex torque wrench for the M6 screws and a 5mm hex torque wrench for the M8 screws, tighten to 55-60 in-lbs (Do not over-tighten).



B. TETHER STRAP INSTALLATION

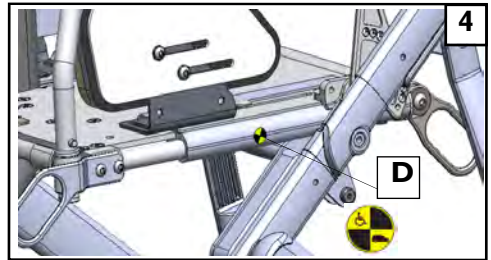
1. Attachment and use of the Tether Strap.

- Transit testing was performed with the tether strap attached at the points shown in (figure 2). The strap must be attached whenever the device is used for transit purposes.
- Loop the tether strap (C) around the stroller handle, and the top bar of the seating shell.
- Thread the strap and velcro® thru the two “D” clips as shown (figure 3).
- Tighten the strap once it is threaded correctly.



2. Attach transit sticker to Seat Rail 4

- a. It is important to attach the transit notification sticker (D) that comes in your kit.
- b. Add it to the seat rail location on the product as shown in (figure 4).

**C. INSPECT****I. Double-check Orientation and Torque on all Hardware.**

- a. Check that front transit brackets (9, R & L) have been installed in the correct positions (left side is shown)
- b. Check that front transit brackets were installed with new longer screws (10).
- c. Using a torque wrench check front and rear screws for correct torque.

DEALER/TECHNICIAN WARNING**⚠ WARNING**

Attention dealers and qualified technicians, do not operate or service this device without first reading the owners manual. If you do not understand the instructions and warnings in the owners manual please contact the Quickie Technical Service Department before operating and/or servicing the Quickie device. Failure to do so may result in damage and/or injury.

IMPORTANT– Please see the Zippie Voyage owner’s manual for additional warnings and information.

Sunrise Medical • 2842 Business Park Ave. • Fresno, CA 93727 • USA
In Canada (800) 263-3390



Customer Service: 800.333.4000
www.SunriseMedical.com

©2017 Sunrise Medical (US) LLC
4.17 245842 Rev. A