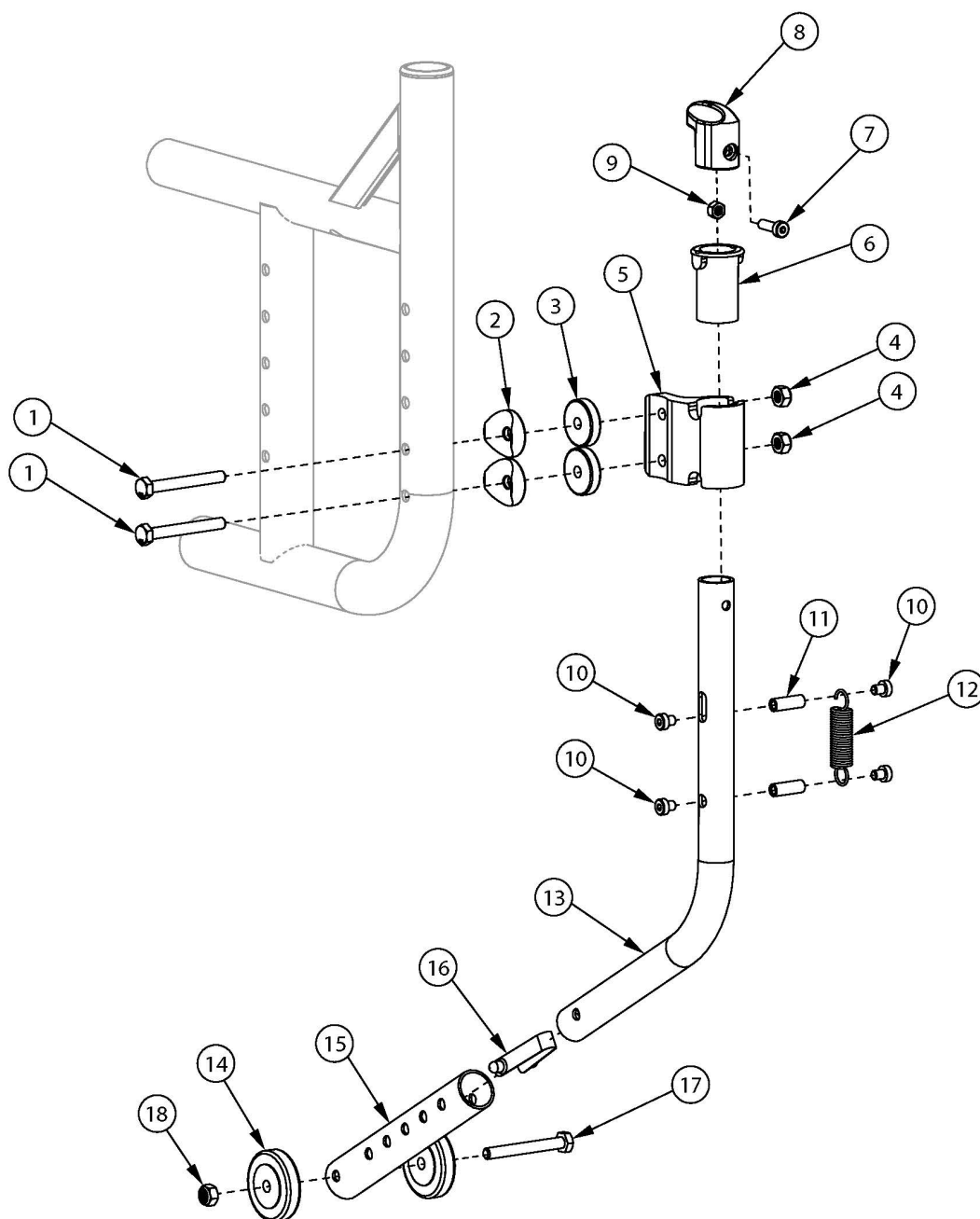


Catalyst 5 Swing-In Anti-Tip



Not available with Heavy Duty Option

Item Number	Part Number	Description	Quantity
1-12, 13a, 14, 15a, 16-18	107720	Swing-In Anti-Tip Short Assembly, CAT5 (PAIR) <i>Used is rear seat height is less than 16"</i>	1
1-12, 13c, 14, 15a, 16-18	107721	Swing-In Anti-Tip Long Assembly, CAT5 (PAIR) <i>Used if rear seat height is 16" or greater</i>	1

Item Number	Part Number	Description	Quantity
1-12, 13b, 14, 15b, 16-18	107722	Swing-In Anti-Tip Steel, Short Assembly, Left, CAT5 <i>Used if rear seat height is less than 16" and a single Swing-In Anti-Tip is ordered</i>	1
1-12, 13b, 14, 15b, 16-18	109276	Swing-In Anti-Tip Steel, Short Assembly, Right, CAT5 <i>Used if rear seat height is less than 16" and a single Swing-In Anti-Tip is ordered</i>	1
1-12, 13d, 14, 15b, 16-18	107723	Swing-In Anti-Tip Steel, Long Assembly, Left CAT5 <i>Used if rear seat height is 16" or greater and a single Swing-In Anti-Tip is ordered</i>	1
1-12, 13d, 14, 15b, 16-18	109277	Swing-In Anti-Tip Steel, Long Assembly, Right CAT5 <i>Used if rear seat height is 16" or greater and a single Swing-In Anti-Tip is ordered</i>	1
4, 10-12, 13a, 14, 15a, 16-18	107724	Swing-In Anti-Tip Short Assembly Replacement, CAT5 <i>Used if rear seat height is less than 16" and a pair of Swing-In Anti-Tips is present on chair</i>	1
4, 10-12, 13c, 14, 15a, 16-18	107725	Swing-In Anti-Tip Long Assembly Replacement, CAT5 <i>Used if rear seat height is 16" or greater and a pair of Swing-In Anti-Tips is present on chair</i>	1
4, 10-12, 13b, 14, 15b, 16-18	107726	Swing-In Anti-Tip Steel Short Assembly Replacement, CAT5 <i>Used if rear seat height is less than 16" and a single Swing-In Anti-Tip is present on chair</i>	1
4, 10-12, 13d, 14, 15b, 16-18	107727	Swing-In Anti-Tip Steel Long Assembly Replacement, CAT5 <i>Used if rear seat height is 16" or greater and a single Swing-In Anti-Tip is present on chair</i>	1
1a	100677	M6 x 60 CLS10.9 DIN931 HHCS ZC	2
1b	100679	M6 x 65 CLS 8.8 DIN931 HHCS ZC <i>Used in place of 100677 when Swing Away Arms or Transit are present on chair</i>	2
1c	100680	M6 x 70 CLS 8.8 DIN931 HHCS ZC <i>Used in place of 100677 and 100679 when Swing Away Arms and Transit are both present on chair</i>	2
1d	100544	M6 x 75 CLS 8.8 DIN931 HHCS ZC <i>Used in place of 100677, 100679 and 100680 as needed</i>	2
2	000056	Saddle 1 1/8" <i>Used if Swing Away Arms or Transit is present on chair</i>	2
3	003516	1.0" OD x 0.25" Thick Spacer Washer <i>Used if Swing Away Arms and Transit are present on chair in addition to the 000056 saddles</i>	2
4	100658	M6 Nylock Nut Blk Zn	2
5	003510INST	Swing In Anti-Tip Housing with Instruction	1
6	003511INST	Swing In Anti-Tip Sleeve with Instruction	1

Item Number	Part Number	Description	Quantity
7	102801	M5 x 16, Low SHCS, Blk Zn	1
8	003515INST	Swing In Anti-Tip Knob with Instruction	1
9	100657	M5 Nylock Nut Blk Zn	1
5-9	506289	Catalyst Swing-In Anti-Tip Housing Assembly	1
10	102796	M5 x 6, Low SHCS, Blk Zn	4
11	003518	M5 x 19mm Threaded Barrel	2
12	003514INST	Spring. Ext, .50 OD x 2.0 LG x 050 W with Instruction	1
13a	003512	Swing In Anti-Tip Tube Short <i>Used if rear seat height is less than 16" and a pair of Swing-In Anti-Tips is ordered</i>	1
13b	003523	Swing In Anti-Tip Tube, Steel, Short <i>Used if rear seat height is less than 16" and a single Swing-In Anti-Tip is ordered</i>	1
13c	003513	Swing In Anti-Tip Tube Long <i>Used if rear seat height is 16" or greater and a pair of Swing-In Anti-Tips is ordered</i>	1
13d	003524	Swing In Anti-Tip Tube, Steel, Long <i>Used if rear seat height is 16" or greater and a single Swing-In Anti-Tip is ordered</i>	1
14, 15b, 17, 18	112367	Extension Assembly, Anti-Tip, Long, E-Coat	1
16	100534	Detent Button Lower	1