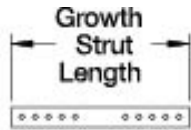
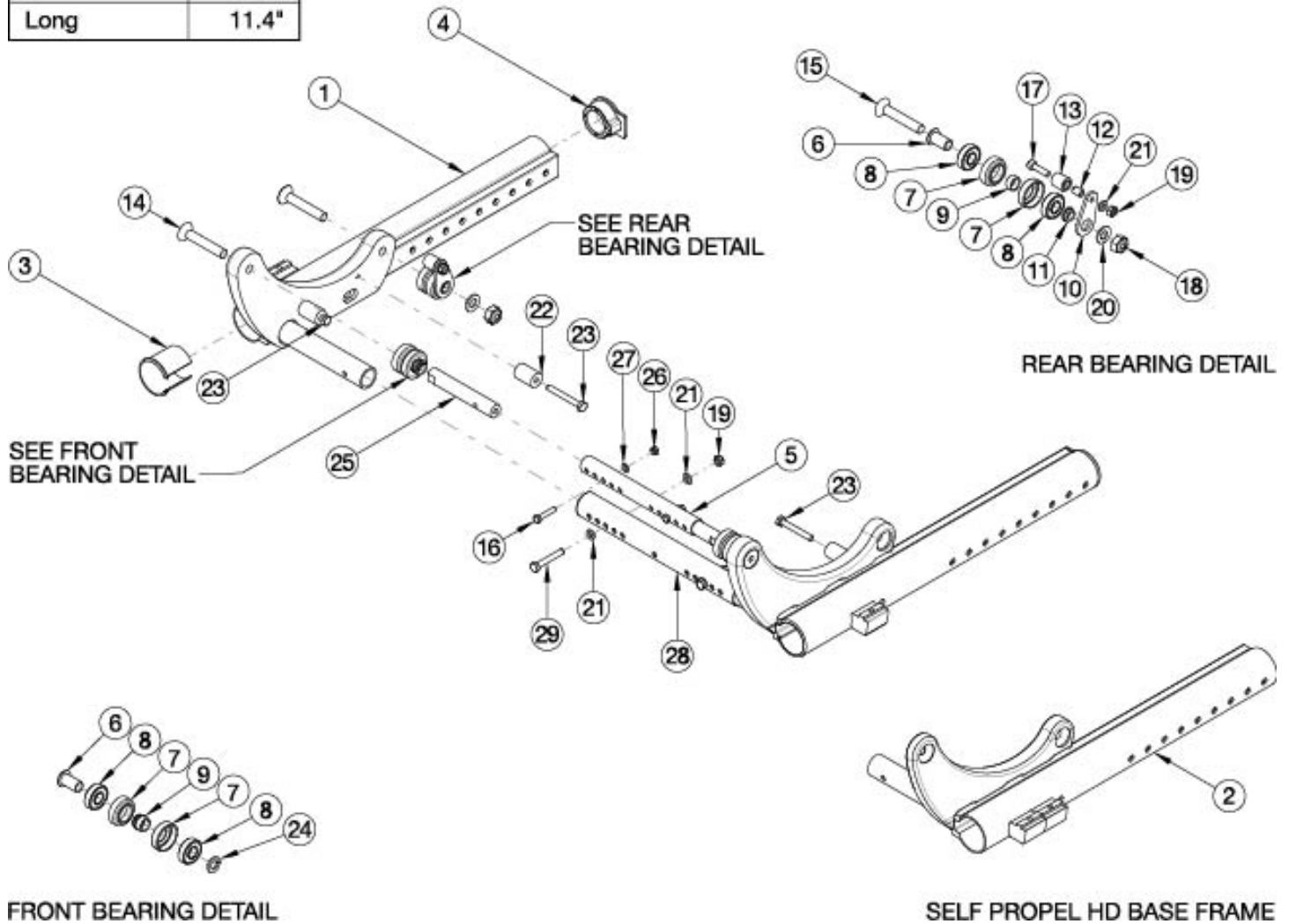


Focus CR Heavy Duty Base Frame



Growth Strut	Length
Short	7.4"
Medium	9.4"
Long	11.4"



FRONT BEARING DETAIL

SELF PROPEL HD BASE FRAME

Heavy Duty Base Frame required for X-Large (20"-24") Frame Width Range If quoting a Left Frame for Australia or New Zealand, 122921 is required when transit is not present.

Item Number	Part Number	Description	Quantity
6-9, 14	503536	Front Bearing Kit Heavy Duty Focus (1 Side)	1
6-13, 15, 17, 19, 21	503537	Rear Bearing Kit Heavy Duty Focus (1 Side)	1
6-15, 17, 19, 21	503538	Bearing Replacement Kit Heavy Duty Focus	1

Item Number	Part Number	Description	Quantity
1a, 3, 4	503429_ _ _	Base Frame Heavy Duty Assembly Right, Focus	1
1b, 3, 4	503430_ _ _	Base Frame Heavy Duty Assembly Left, Focus	1
2a, 3, 4	503415_ _ _	Base Frame Heavy Duty Self Propel Assembly Right, Focus	1
2b, 3, 4	503416_ _ _	Base Frame Heavy Duty Self Propel Assembly Left, Focus	1
3	001009	Sleeve Base Frame TILT	2
4	001010	Plug Base Frame TILT	2
5a	001030	Growth Strut Rotary Short TILT <i>Used on Small Width Range</i>	1
5b	001031	Growth Strut Rotary Medium TILT <i>Used on Medium Width Range</i>	1
5c	001032	Growth Strut Rotary Long TILT <i>Used on Large Width Range</i>	1
5d	112004	Growth Strut Rotary X-Long TILT <i>Used on X-Large Width Range</i>	1
6	001014	Bearing Shaft TILT	4
7	001015	Bearing Liner TILT	8
8	100902	Bearing 1 1/8" x 1/2" R8RS	8
9	001016	Bearing Spacer TILT	4
10	001017	Swivel Plate TILT	2
12	001019	Bearing Shaft Upper	2
13	001020	Bearing Upper TILT	2
14	101816	M10 x 50 FHCS Blk Zn	2
15	101817	M10 x 60 FHCS Blk Zn	2
16	101821	M5 x 25 HHCS Blk Zn	2
17	101845	M6 x 22 SHCS Blk Zn	2
18	101840	M10 Nylock Nut Blk Zn	2
19	100658	M6 Nylock Nut Blk Zn	2
20	101859	M10 Flat Washer Blk Zn	2
21	100746	M6 Flat Washer Blk Zn	2

Item Number	Part Number	Description	Quantity
22	001405	Spacer, .69OD x .24ID x .1.01Lg	4
23	103511	M6 x 1 x 45 HHCS SFLG CLS8.8 Blk Zn DIN6921	4
24	102337	Lockwasher, M10, Blk Zn	2
25	001300	Strut End HD TILT <i>Required if retrofitting to HD</i>	2
26	100657	M5 Nylock Nut Blk Zn	2
27	101856	Flat Washer, M5, Blk Zn	2
28a	001011	Growth Strut, Base, Small Tilt	1
28b	001012	Growth Strut, Base, Medium Tilt	1
28c	001013	Growth Strut, Base, Large Tilt	1
28d	112005	Growth Strut, Base, X-Large Tilt	1
29	001014	Bearing Shaft TILT	2
	122921	Not AS/NZS 3696.19 Compliant On-Chair Label with Instruction	1

Matte Finish	
Code	Color Name
CGM	Charcoal Gray
EGM	Emerald Green
GGM	Graphite Gray*
IBM	Iridescent Burgundy
INM	Iridescent Navy
AGM	Military Green**
RRM	Retro Red
RBM	Royal Blue
SBM	Shadow Black
SWM	Smooth White

* Discontinued Color

** Formerly called Army Green

Gloss Finish	
Code	Color Name
BLK	Black
BLU	Blue
SKY	Blue Skies
BRO	Bright Orange*
PNK	Bubblegum Pink
BUR	Burgundy*
CBL	Candy Blue
PUR	Candy Purple
RED	Candy Red
COP	Copper
DPR	Deep Purple*
EBL	Electric Blue*
GRN	Forest Green*
FUS	Fuchsia*
GSM	Granny Smith
MTF	Metallic Fuchsia*
MOR	Metallic Orange
ORG	Orange*
SAP	Sapphire*
SIL	Silver
TEA	Teal
YLW	Yellow
FLM	Graphic Image Transfer