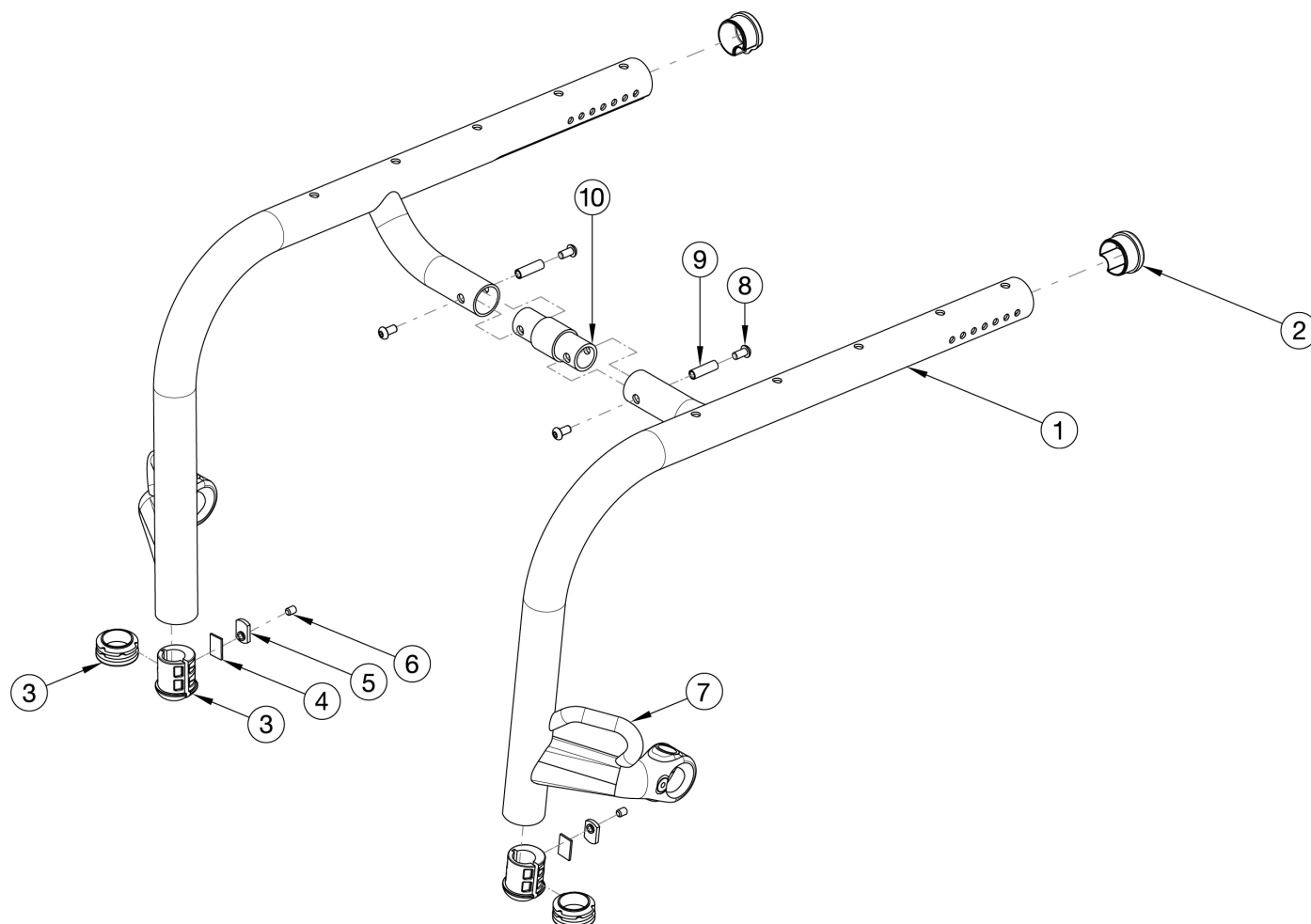


# Rogue XP Rigid Frame



Contact Customer Service for replacement frame quote. Serial Number required upon quote. If quoting a Frame for Australia or New Zealand, 122921 is required when transit is not present. Used on chairs invoiced starting on 3/12/25

Item Number	Part Number	Description	Quantity
8, 9, 10b	501331	Connector Assembly Frame 1" w/ Hardware <i>Used with 16" seat width</i>	1
8, 9, 10c	501332	Connector Assembly Frame 2" w/ Hardware <i>Used with 17" seat width</i>	1
8, 9, 10d	501333	Connector Assembly Frame 3" w/ Hardware <i>Used to grow up to 18" seat width</i>	1
2	114196	Rogue End Cap Dimpled	2
3a	113193	Footrest Sleeve 3/4" to 1-3/8" <i>Used only with frame mounted footrests. Use item 3b for high mounted footrests.</i>	2

Item Number	Part Number	Description	Quantity
3b	101113	Tube End Plug 1 3/8" <i>Used when high mounted footrests are present.</i>	2
4	113194	Footplate Plug Backing Plate <i>Used only with frame mounted footrests. Use item 3b for high mounted footrests.</i>	2
5	102092	M6 Weld Nut Offset <i>Used only with frame mounted footrests. Use item 3b for high mounted footrests.</i>	2
6	102090	M6 Set Screw Flat Point <i>Used only with frame mounted footrests. Use item 3b for high mounted footrests.</i>	2
8	100667	M6 x 12 BTN SHCS BLKZC w/Patch <i>Not included on 18" wide frame</i>	4
9	000980	M6 x 27.69 Threaded Barrel <i>Not included on 18" wide frame</i>	2
10a	000585	Frame Connector 0" LW/RG <i>Used with 10"-15" seat widths</i>	1
10b	000586	Frame Connector 1" LW/RG <i>Used with 16" seat width</i>	1
10c	000587	Frame Connector 2" LW/RG <i>Used with 17" seat width</i>	1
10d	000588	Frame Connector 3" LW/RG <i>Used with 18" seat width</i>	1
	122921	Not AS/NZS 3696.19 Compliant On-Chair Label with Instruction	1