

310 lb. Weight Capacity
 Effective July 1st, 2025

Bill To:

Date: _____
 P.O.#: _____
 Quote#: _____
 Account#: _____
 Ordered By: _____
 Supplier Company: _____
 ATP (REQUIRED): _____
 Address: _____

 City, State, Zip: _____
 Phone: _____
 Email: _____

Ship To:

Name: _____
 Address: _____
 City/State: _____
 Zip: _____
 Phone: _____
 Tag For: _____


AltimateMedical
 creating products · changing lives

Ph: 800.342.8968 or 507.697.6393
 Fax: 877.342.8968 or 507.697.6900
 webquotes@altimatemedical.com activeaid.com

ActiveAid SC Shower Commode
ActiveAid SC Shower Commode Standard Configuration Includes:

Black Frame, 18"Wide Frame x 16" Deep Frame, Standard Seat Height, 18"W x 16"D Front Open Molded Seat with 2" fore/aft adjustment, Fixed Seat Slope, Standard Casters, 22" Nylon Rear Wheel with Street Tread Tire & Nylon Handrim (pair), Bolted Axles (pair), Scissor Wheel Lock (pair), One Piece Foot Plate Height Adjustable, Solid Contoured Foam Back, Fixed Back, Fixed Push Handle, Flip Up Armrests (pair).

■ ActiveAid SC Shower Commode Standard Configuration \$2,350

Frame Color- must select one

☐ Black (standard) N/C
☐ Red N/C
☐ Blue N/C
☐ Silver N/C
☐ White N/C

Frames- must select one from each category; width, depth and seat height

WIDTH

☐ 16" Wide (may limit access over toilets) \$495
☐ 18" Wide (standard) N/C
☐ 20" Wide \$495

DEPTH

☐ 16" Deep (standard) N/C
☐ 18" Deep \$395
☐ 20" Deep \$395

SEAT HEIGHT

☐ Standard (21.75"-23.5" Transfer Height) (standard) N/C
☐ Short (19.75"-21.5" Transfer Height) (may limit access over toilets) \$395

Seats- SEATS MUST MATCH SELECTED FRAME SIZE

☐ 18"Wx16"D Front Open Contoured Seat (standard)  N/C

DEPTH AND WIDTH MUST BE SELECTED TO MATCH FRAME SIZE

☐ Specialty Contoured Seats Base Price \$360
(required if standard 18"Wx16"D Front Open Contoured Seat was NOT ordered)

WIDTH- must select one if standard 18"Wx16"D Front Open Contoured Seat was NOT ordered

☐ Formed Seat for 16" Wide Frame \$100
☐ Formed Seat for 18" Wide Frame (standard) N/C
☐ Formed Seat for 20" Wide Frame \$100

DEPTH- must select one if standard 18"Wx16"D Front Open Contoured Seat was NOT ordered

☐ Formed Seat for 16" Deep Frame (standard) N/C
☐ Formed Seat for 18" Deep Frame \$100
☐ Formed Seat for 20" Deep Frame \$100

SEAT ORIENTATION- must select one if standard 18"Wx16"D Front Open Contoured Seat was NOT ordered

☐ Front Opening (standard)  N/C
☐ Closed \$100
☐ Left Side Opening \$100
☐ Right Side Opening \$100
☐ Rear Opening \$100

GEL TOP

☐ Gel Top- only available with 18"Wx16"D and 18"Wx18"D Front Open, and 18"Wx18"D Closed Front Seats \$200

Seat Slope- must select one

☐ Fixed Seat Slope (standard) N/C
☐ Adjustable Seat Slope (may limit access over toilets) \$105



Front Casters- must select one

- | | |
|--|-------|
| <input type="checkbox"/> PC5642 Standard 5" (standard) | N/C |
| <input type="checkbox"/> PC5641 Deluxe Aluminum 5" | \$120 |

Mag Style Wheel/Hand Rims/Wheel Size/Tread Type/Axles MUST SELECT ONE STYLE OF WHEEL

NYLON REAR WHEEL

- | | |
|---|------|
| <input type="checkbox"/> Nylon Rear Wheel with Deep Thread and Nylon Hand Rim (pair) (standard) | |
| WHEEL SIZE -must select one | |
| <input type="checkbox"/> PC5600 20" Rear Wheel | N/C |
| <input type="checkbox"/> PC5601 22" Rear Wheel (standard) | N/C |
| <input type="checkbox"/> PC5602 24" Rear Wheel | N/C |
| AXLES -must select one | |
| <input type="checkbox"/> PC5632 Bolted Axles (pair) (standard) | N/C |
| <input type="checkbox"/> PC5633 Quick Release Axles (pair) | \$95 |

OR

MAGNESIUM REAR WHEEL

- | | |
|--|-------|
| <input type="checkbox"/> Magnesium Rear Wheel (reduces overall width of chair, pair) | |
| HAND RIMS -must select one | |
| <input type="checkbox"/> Aluminum Hand Rim (pair) | N/C |
| <input type="checkbox"/> Slim Ergonomic Handrim (reduces overall width of chair, pair) | \$140 |
| WHEEL SIZE -must select one | |
| <input type="checkbox"/> 22" Rear Wheel | \$495 |
| <input type="checkbox"/> 24" Rear Wheel | \$495 |
| TREAD TYPE-PNEUMATIC FLAT FREE -must select one | |
| <input type="checkbox"/> Shallow Tread | N/C |
| <input type="checkbox"/> Deep Tread | N/C |
| AXLES -must select one | |
| <input type="checkbox"/> PC5630 Bolted Axles (pair) | N/C |
| <input type="checkbox"/> PC5631 Quick Release Axles (pair) | \$95 |

Wheel Locks- must select one

- | | |
|--|-------|
| <input type="checkbox"/> PC5502 Scissors Wheel Locks (pair) (standard) | N/C |
| <input type="checkbox"/> PC5501 Toggle Wheel Locks with Removable Long Handle (pair) | \$200 |
| <input type="checkbox"/> PC5500 Toggle Wheel Locks Short Handle (pair) | \$140 |

Foot Plates- height adjustable, must select one

- | | |
|---|--------------|
| <input type="checkbox"/> Frame Mounted One Piece Foot Plate (reduces overall chair depth) (standard) | N/C |
| <input type="checkbox"/> Frame Mounted One Piece Foot Plate, Angle Adjustable (reduces overall chair depth) | \$295 |
| <input type="checkbox"/> Frame Mounted Two Piece Flip-Up Foot Plates (pair, reduces overall chair depth) | \$280 |
| <input type="checkbox"/> Swing-Away Gooseneck Flip-Up Foot Plate-Short (pair, detachable) | \$364 |
| <input type="checkbox"/> Swing-Away Gooseneck Flip-Up Foot Plate-Tall (pair, detachable) | \$364 |
| <input type="checkbox"/> Omit Foot Plates (only select if Foot Plate is not needed) | CREDIT \$-45 |

Foot Plate Accessories

- | | |
|--|------|
| <input type="checkbox"/> Neoprene Cover for Frame Mounted One Piece Foot Plate | \$90 |
| <input type="checkbox"/> Neoprene Cover for Frame Mounted Flip-Up & Gooseneck Foot Plates (pair) | \$90 |
| <input type="checkbox"/> PC5478 Foot Straps (pair, only available Flip-Up & Gooseneck Foot Plates. not available with Neoprene Covers) | \$15 |
| <input type="checkbox"/> PC5470 Heel Stop (pair, not available with Neoprene Covers) | \$30 |
| <input type="checkbox"/> PC5471 Contoured Foot Pad with Heel Stop (pair, not available with Neoprene Covers) | \$60 |

Backrest Style/Backrest Adjustment/Push Handles- must select one of each

- | | |
|--|-------|
| BACKREST STYLE - must select one | |
| <input type="checkbox"/> Solid Contoured Foam Back (standard) | N/C |
| <input type="checkbox"/> Sling Back | \$245 |
| BACKREST ADJUSTMENT - must select one | |
| <input type="checkbox"/> PC5100 Fixed Back (7", standard) | N/C |
| <input type="checkbox"/> PC5101 Angle-Adjustable and Foldable Back (0°, 7°, and 14°) | \$225 |
| PUSH HANDLES - must select one | |
| <input type="checkbox"/> Push Handle Fixed (standard) | N/C |
| <input type="checkbox"/> Push Handle Stroller Style | \$125 |

Armrests- height adjustable, must select one

- | | |
|---|-------|
| <input type="checkbox"/> PC5200 Flip-Up Armrests (standard) | N/C |
| <input type="checkbox"/> PC5201 Flip-Up Multi-Adjustable Armrests (pair, PC5101 Angle Adjustable Back required) | \$150 |

Accessories

- | | |
|--|-------|
| <input type="checkbox"/> PC5300 Left Side Swing-Away Adjustable Lateral (multi-link, angle, depth, & height adjustable) | \$255 |
| <input type="checkbox"/> PC5301 Right Side Swing-Away Adjustable Lateral (multi-link, angle, depth, & height adjustable) | \$255 |
| <input type="checkbox"/> PC5302 Side Guards-Plastic, 8.75"L x 6.25"H (pair) | \$169 |
| <input type="checkbox"/> PC5640 Anti-Tippers (pair, required with Rear Wheel Position other than 0°) | \$120 |

Belts

- | | |
|---|-------|
| <input type="checkbox"/> PW60884 Waist Belt (66" and 68" circumference with 12" overlap) | \$76 |
| <input type="checkbox"/> PT60884 Trunk Belt (64", 66" and 68" circumference with 12" overlap) | \$76 |
| <input type="checkbox"/> P60882 Calf Strap for Non Swing-Away Gooseneck Foot Plate | \$76 |
| <input type="checkbox"/> P60879 Calf Strap for Swing-Away Gooseneck Foot Plate | \$76 |
| <input type="checkbox"/> PC5315 Bodypoint® Calf Strap for 16" Wide Frame | \$195 |
| <input type="checkbox"/> PC5316 Bodypoint® Calf Strap for 18" Wide Frame | \$195 |
| <input type="checkbox"/> PC5317 Bodypoint® Calf Strap for 20" Wide Frame | \$195 |
| <input type="checkbox"/> PC5310 Bodypoint® Trunk Belt | \$224 |
| <input type="checkbox"/> PC5311 Bodypoint® Trunk Belt (pair) | \$423 |
| <input type="checkbox"/> PC5312 Bodypoint® Trunk Belt & Waist Belt | \$277 |
| <input type="checkbox"/> PC5313 Bodypoint® XL Trunk Belt | \$234 |
| <input type="checkbox"/> PC5314 Bodypoint® Belt w/Quick Release Knobs | \$260 |
| <input type="checkbox"/> PC5318 Bodypoint® Knee Belt | \$250 |

Pans- (may limit access over toilets)

- | | |
|---|-------|
| <input type="checkbox"/> PC5700 Pan, Cover, and Hanger 1" Drop | \$200 |
| <input type="checkbox"/> PC5701 Pan, Cover, and Hanger 2" Drop | \$205 |
| WHEN ADJUSTABLE SEAT SLOPE IS SET AT 0°, A 3" DROP OR GREATER IS REQUIRED | |
| <input type="checkbox"/> PC5702 Pan, Cover, and Hanger 3" Drop | \$210 |
| <input type="checkbox"/> PC5703 Pan, Cover, and Hanger 4" Drop | \$215 |
| <input type="checkbox"/> PC5704 Pan, Cover, and Hanger 5" Drop | \$220 |





Chair Set-Up-REQUIRED (If no selection is made DEFAULT will be chosen)

FRONT SEAT TO FLOOR HEIGHT- Caster Fork position, must select one

	Standard Frame	Short Frame
<input type="checkbox"/> Position 3 - High	23.5"	21.5"
<input type="checkbox"/> Position 2 - Middle DEFAULT	22.75"	20.75"
<input type="checkbox"/> Position 1 - Low	21.75"	19.75"

REAR SEAT SLOPE- must select one if adjustable seat slope was ordered

- ☐ 0" (Subtract 0" from Front Seat to Floor Height) **DEFAULT**
- ☐ 0.5" (Subtract 0.5" from Front Seat to Floor Height)
- ☐ 1" (Subtract 1.0" from Front Seat to Floor Height)
- ☐ 1.5" (Subtract 1.5" from Front Seat to Floor Height)

REAR WHEEL POSITION- must select one

- ☐ 0" (most rearward position) **DEFAULT**
- ANTI-TIPPERS REQUIRED FOR REAR WHEEL POSITION OTHER THAN 0"
- ☐ 0.5"
- ☐ 1"
- ☐ 1.5"
- ☐ 2"
- ☐ 2.75"

SEAT APERTURE LOCATION- must select one

- ☐ 1" Forward (reduces seat depth by 1")
- ☐ Centered **DEFAULT**
- ☐ 1" Rearward (increases seat depth by 1")

BACK HEIGHT- must select one

- ☐ 18" to top of Backrest **DEFAULT**
- ☐ 16" to top of Backrest
- ☐ 14" to top of Backrest

ARMREST HEIGHT- from the top of the seat, must select one

- ☐ 7" **DEFAULT**
- ☐ 8"
- ☐ 9"

FOOT PLATE ANGLE- must select one if one piece angle adjustable foot plate was ordered

- ☐ -16°
- ☐ Flat **DEFAULT**
- ☐ +16°

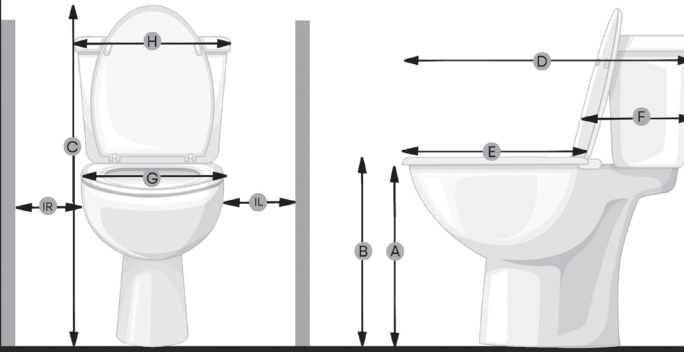
FOOT PLATE HEIGHT- must select one if one piece or flip up foot plate was ordered

- ☐ Maximum **DEFAULT**
- ☐ 1" Shorter
- ☐ 2" Shorter

FOOT PLATE DEPTH- must select one

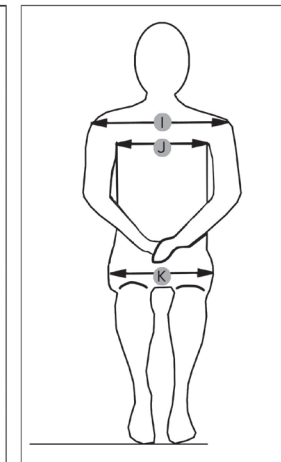
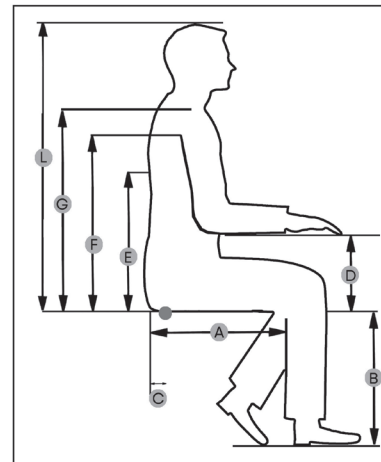
- ☐ 0.5" Forward
- ☐ Centered **DEFAULT**
- ☐ 0.5" Rearward

TOILET MEASUREMENTS



- A. Floor to top of toilet bowl ____"
- B. Floor to top of toilet seat - down ____"
- C. Floor to top of tank ____"
- D. Wall to front of toilet ____"
- E. Front of tank to front of bowl ____"
- F. Wall to front of tank ____"
- G. Width of bowl ____"
- H. Width of tank ____"
- IL. Nearest obstruction - left side ____"
- IR. Nearest obstructions - right side ____"

CLIENT MEASUREMENTS



Height: _____ Weight: _____

LEFT RIGHT

- ____" ____" A. Buttock/thigh depth
- ____" ____" B. Lower leg length
- ____" ____" C. Ischial depth
- ____" ____" D. Seat to elbow
- ____" ____" E. Seat to inferior scapula
- ____" ____" F. Axilla
- ____" ____" G. Top of shoulder
- ____" ____" H. Top of head
- ____" ____" I. Shoulder width
- ____" ____" J. Chest width
- ____" ____" K. Hip width
(Overall width if greater than hip width)
- ____" ____" L. Height from seat to top of head
(asymmetrical width for windswept legs or scoliotic posture)



AltimateMedical
creating products · changing lives

Ph: 800.342.8968 or 507.697.6393

Fax: 877.342.8968 or 507.697.6900

webquotes@altimatemedical.com activeaid.com

MATRIX

A. Overall Chair Width

Overall chair width is measured from outside handrim to outside opposite side handrim.

B. Overall Chair Depth

Overall chair depth is measured from the most rearward point of the chair to the most forward point of the chair.

C. Front Seat to Floor Height

Front seat to floor height is measured from the floor to the top front edge of the standard 2" seat cushion.

D. Axle Mount Position

Axle Mount Position is the measurement of the vertical position of the center of the axle to the floor.

E. Under Seat Clearance

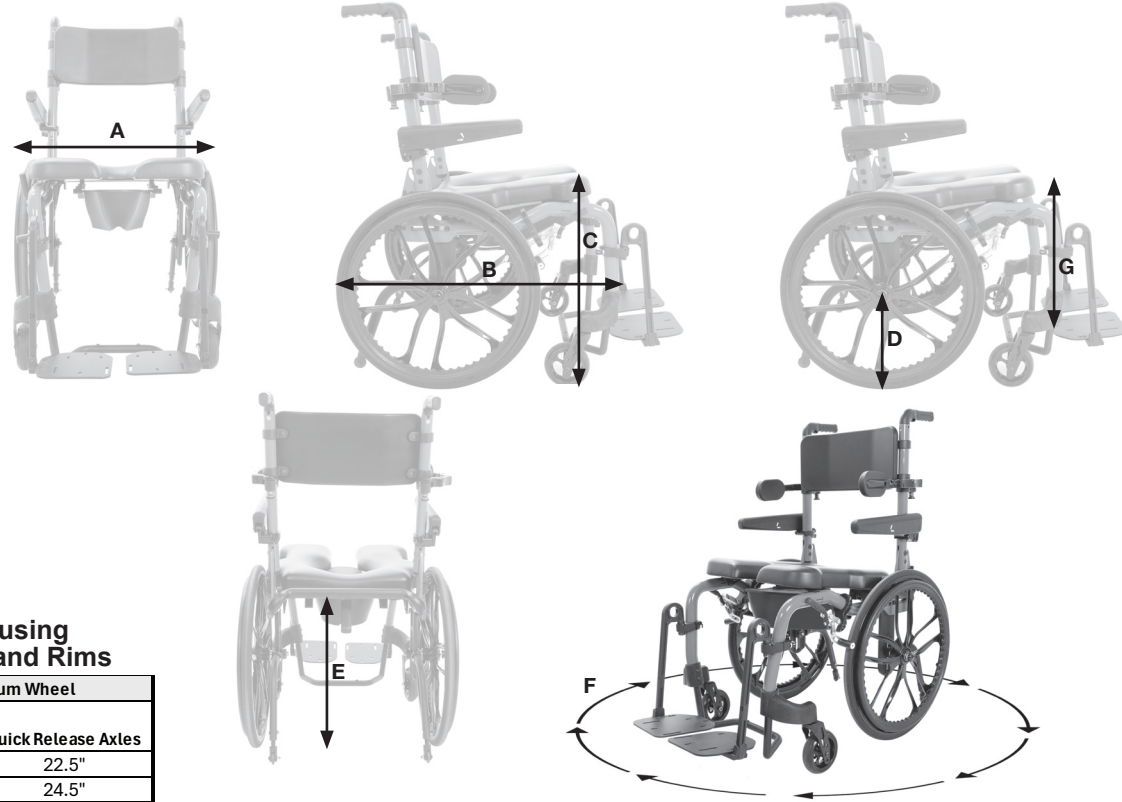
Under Seat Clearance refers to the vertical distance from the lowest point beneath the seat cushion to the floor. This measurement represents the space available from the bottom of the chair's seat frame to the floor, ensuring sufficient clearance to accommodate a toilet.

F. Turning Radius

The Turning Radius is the measure of the distance from that center point of the chair to the furthest point of the chair base while turning in a complete circle.

G. Seat to Footplate Height

Seat to footplate height range is measured from the top of the footplate to the top edge of the standard 2" cushion.



A: Chair Width using Nylon or Aluminum Hand Rims

Seat Width	Nylon Wheels	Magnesium Wheels
16"	22.25"	23"
18"	24.25"	25"
20"	26.25"	27"

*measurements represent bolt on and quick release axles

A: Chair Width using Slim Ergonomic Hand Rims

Seat Width	Magnesium Wheel	
	Bolt On Axles	Quick Release Axles
16"	21.5"	22.5"
18"	23.5"	24.5"
20"	25.5"	26.5"

B: Overall Chair Depth-Nylon Wheels

	Nylon Wheel 20"						Nylon Wheel 22"						Nylon Wheel 24"					
	16"		18"		20"		16"		18"		20"		16"		18"		20"	
Footplate	Minimum	Maximum	Minimum	Maximum	Minimum	Maximum	Minimum	Maximum	Minimum	Maximum	Minimum	Maximum	Minimum	Maximum	Minimum	Maximum	Minimum	Maximum
One Piece Footplate	31.6"	37.3"	31.5"	37.3"	33.6"	39.3"	32.3"	38"	32.3"	38"	34.3"	40"	33.5"	39.25"	33.5"	39.25"	35.5"	41.25"
Flip Up Footplate	33.8"	37.6"	33.8"	37.6"	35.8"	39.6"	34.6"	38.3"	34.5"	38.3"	36.5"	40.3"	35.75"	39.5"	35.75"	39.5"	37.75"	41.5"
Swing-Away Gooseneck																		
Flip-Up Foot Plate-Short	38.6"	42.3"	38.6"	42.3"	40.6"	44.3"	39.3"	43.1"	39.3"	43"	41.3"	45"	40.5"	44.25"	40.5"	44.25"	42.5"	46.25"
Swing-Away Gooseneck																		
Flip-Up Foot Plate-Tall	38.6"	43.1"	38.6"	43.1"	40.6"	45.1"	39.3"	43.8"	39.3"	43.8"	41.3"	45.8"	40.5"	45"	40.5"	45"	42.5"	47"

Note 1: Minimum depth measurement taken with footplate in most rearward position and Center of Gravity a 2.75" (most forward)

Note 2: Maximum depth measurement taken with footplate in most forward position and Center of Gravity a 0" (most rearward)

B: Overall Chair Depth-Magnesium Wheels

	Magnesium Shallow Tread Wheel 22"						Magnesium Shallow Tread Wheel 24"						Magnesium Deep Tread Wheel 22"						Magnesium Deep Tread Wheel 24"					
	16"		18"		20"		16"		18"		20"		16"		18"		20"		16"		18"		20"	
Footplate	Minimum	Maximum	Minimum	Maximum	Minimum	Maximum	Minimum	Maximum	Minimum	Maximum	Minimum	Maximum	Minimum	Maximum	Minimum	Maximum	Minimum	Maximum	Minimum	Maximum	Minimum	Maximum	Minimum	Maximum
One Piece Footplate	32.25"	38"	32.25"	38"	34.25"	40"	32.6"	38.3"	32.6"	38.3"	34.6"	40.3"	33.1"	38.9"	33.1"	38.9"	35.1"	40.9"	33.5"	39.25"	33.5"	39.25"	35.5"	41.25"
Flip Up Footplate	34.5"	38.25"	43.5"	38.25"	36.5"	40.25"	34.8"	38.6"	34.8"	38.6"	36.8"	40.6"	35.3"	39.1"	35.4"	39.1"	37.4"	41.1"	35.75"	39.5"	35.75"	39.5"	37.75"	41.5"
Swing-Away Gooseneck																								
Flip-Up Foot Plate-Short	39.25"	43"	39.25"	43"	41.25"	45"	39.6"	43.3"	39.6"	43.3"	41.6"	45.3"	40.1"	43.9"	40.1"	43.9"	42.1"	45.9"	40.5"	44.25"	40.5"	44.25"	42.5"	46.25"
Swing-Away Gooseneck																								
Flip-Up Foot Plate-Tall	39.25"	43.75"	39.25"	43.75"	41.25"	45.75"	39.6"	44"	39.6"	44"	41.6"	46"	40.1"	44.6"	40.1"	44.6"	42.1"	46.6"	40.5"	45"	40.5"	45"	42.5"	47"

Note 1: Minimum depth measurement taken with footplate in most rearward position and Center of Gravity Rear Wheel Position at 2.75" (most forward)

Note 2: Maximum depth measurement taken with footplate in most forward position and Center of Gravity Rear Wheel Position at 0" (most rearward)



C: Front Seat to Floor Height

	Fork Position		
	1 (Low)	2 (Middle)	3 (High)
Standard Frame	21.75"	22.75"	23.5"
Short Frame	19.75"	20.75"	21.5"

Note 1: Measurements were taken using 2" gel cushion, Subtract .25" if not using Gel Seat

Note 2: When using 2" foam cushion subtract .25"

D: Axle Mount Position

Frame Type	Front Seat to Floor Height	Nylon Wheel			Magnesium Shallow Tread		Magnesium Deep Tread	
		20"	22"	24"	22"	24"	22"	24"
Standard Frame	21.75"	D + 1	B - 1	A*	B	A - 1	A - 1	A*
	22.75"	F + 1	D - 1	B	D	B - 2	C - 1	B + 1
	23.50"	G - 1	F + 1	C - 2	E - 2	D	E + 1	C - 1
Short Frame	19.75"	D + 1	B - 1	A*	B	A - 1	A - 1	A*
	20.75"	F + 1	D - 1	B	D	B - 2	C - 1	B + 1
	21.5"	G - 1	F + 1	C - 2	E - 2	D	E + 1	C - 1

Note 1: Each seating offers 1/2" adjustment

Note 2: Not able to achieve level seat to floor height in highest axle position, approximately 1/2" rear Slope.

E: Under Seat Height Clearance

	Standard Frame				Short Frame			
	Fixed Seat Slope		Adjustable Seat Slope*		Fixed Seat Slope		Adjustable Seat Slope*	
	No Pan Hanger	1" Pan Hanger	No Pan Hanger	1" Pan Hanger	No Pan Hanger	1" Pan Hanger	No Pan Hanger	1" Pan Hanger
	Caster Position 1	Caster Position 2	Caster Position 3		Caster Position 1	Caster Position 2	Caster Position 3	
	18.5"	17"	17"	15.5"	16.5"	15"	15"	13.5"
	19.5"	18"	18"	16.5"	17.5"	16"	16"	14.5"
	20.25"	18.75"	18.75"	17.25"	18.25"	16.75"	16.75"	15.25"

Seat Slope adjustable range is 0"-1.5"

*Measurements taken with seat fully Sloped at 1.5". Add up to 1.5" if the seat is partially Sloped to Flat.

E²: Under Seat Width Clearance

Frame Width	Between Axles
16"	11.5"
18"	13.5"
20"	15.5"

F: Turning Radius

Frame Width	Frame Depth	Minimum	Maximum
16"	16" & 18"	23.38"	31.63"
	20"	25.25"	34.25"
18"	16" & 18"	23.5"	32.5"
	20"	25.5"	34.5"
20"	16" & 18"	23.8"	32.8"
	20"	25.75"	34.75"

G: Seat to Footplate Height

Foot Plate	Standard Frame		Short Frame	
	Min Height	Max Height	Min Height	Max Height
One Piece Foot Plate, Height Adjustable	15"	18.6"	13"	16.6"
One Piece Foot Plate, Height Adjustable, Angle Adjustable	14.75"	18.4"	12.75"	16.4"
Flip-Up Foot Plates, Frame Mounted*	16.5"	19.25"	14.5"	17.25"
Swing-Away Gooseneck Flip-Up Foot Plate-Short	12.5"	19.0"	12.5"	17.0"
Swing-Away Gooseneck, Flip-Up Foot Plate-Tall	16.5"	22.75"	16.5"	20.75"

Note 1: Flip-Up footplates swings up to the side of hanger mount

Master Note: Please see IFU for Metric Measurements

