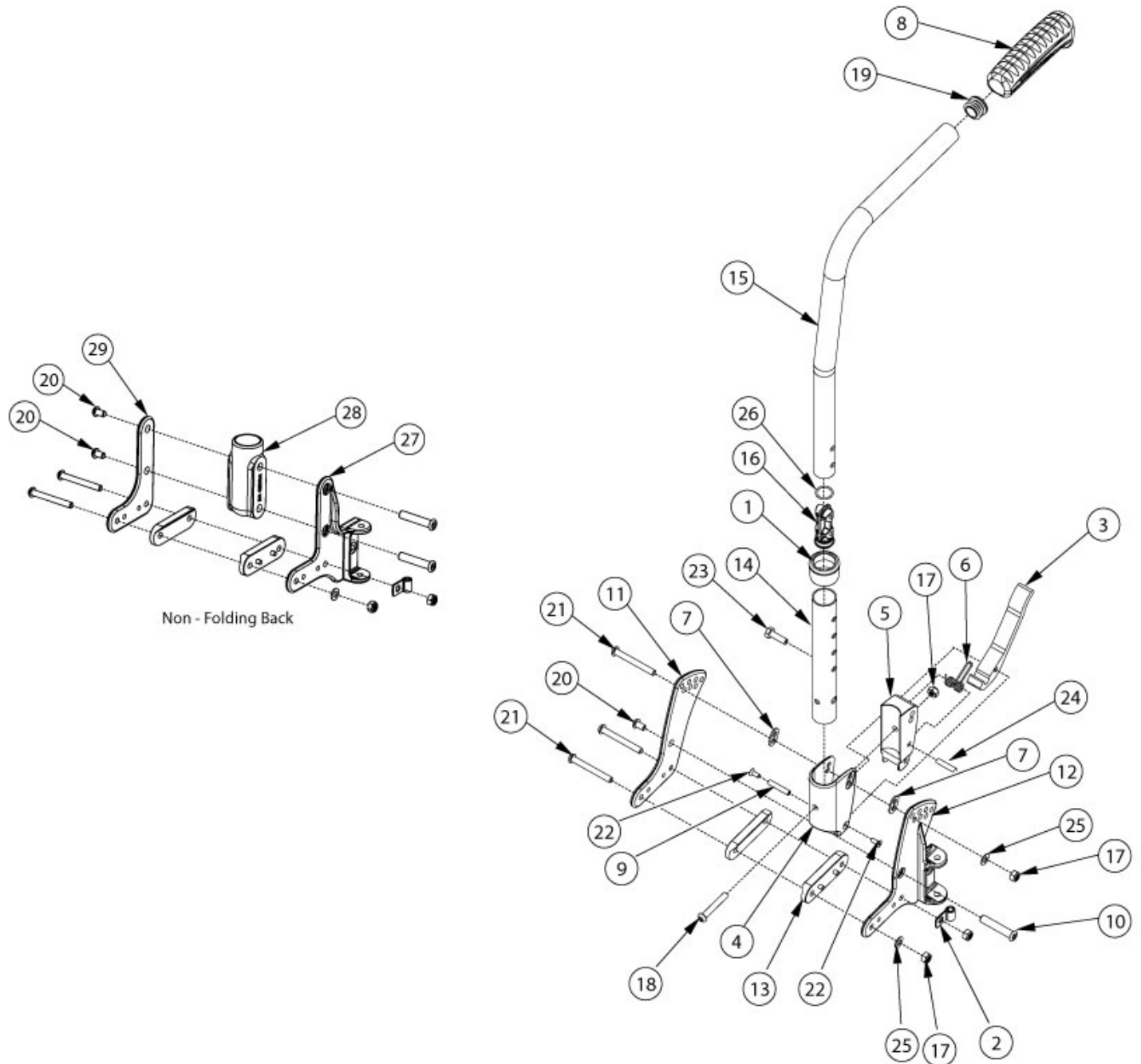


# Liberty 8 Degree Bend Backrest



*If changing to a new back post style or height, please see the Liberty Tilt Mechanism page as new tilt cables may be required. If changing from a non-folding stroller handle backrest to a non-folding 8 degree bend backrest, #28 (003310) is required.*

Item Number	Part Number	Description	Quantity
1, 3-10, 11a, 12a, 12b, 13, 14, 15a, 16-26	120767	Short Height Adjustable 8° Bend with Push Handle Folding Backrest Kit Liberty (Pair)	1
1, 3-10, 11b, 12a, 12b, 13, 14, 15a, 16-26	120779	Short Height Adjustable 8° Bend with Push Handle Folding Backrest Kit Transit Liberty (Pair)	1

Item Number	Part Number	Description	Quantity
1, 3-10, 11a, 12a, 12b, 13, 14, 15b, 16-26	120768	Medium Height Adjustable 8° Bend with Push Handle Folding Backrest Kit Liberty (Pair)	1
1, 3-10, 11b, 12a, 12b, 13, 14, 15b, 16-26	120780	Medium Height Adjustable 8° Bend with Push Handle Folding Backrest Kit Transit Liberty (Pair)	1
1, 3-10, 11a, 12a, 12b, 13, 14, 15c, 16-26	120769	Tall Height Adjustable 8° Bend with Push Handle Folding Backrest Kit Liberty (Pair)	1
1, 3-10, 11b, 12a, 12b, 13, 14, 15c, 16-26	120781	Tall Height Adjustable 8° Bend with Push Handle Folding Backrest Kit Transit Liberty (Pair)	1
1, 8, 10, 13, 14, 15a, 16, 19-21, 23, 26, 27a, 27b, 28, 29a	120764	Short Height Adjustable 8° Bend with Push Handle Non-Folding Backrest Kit Liberty (Pair)	1
1, 8, 10, 13, 14, 15a, 16, 19-21, 23, 26, 27a, 27b, 28, 29b	120776	Short Height Adjustable 8° Bend with Push Handle Non-Folding Backrest Pair Kit Transit Liberty (Pair)	1
1, 8, 10, 13, 14, 15b, 16, 19-21, 23, 26, 27a, 27b, 28, 29a	120765	Medium Height Adjustable 8° Bend with Push Handle Non-Folding Backrest Kit Liberty (Pair)	1
1, 8, 10, 13, 14, 15b, 16, 19-21, 23, 26, 27a, 27b, 28, 29b	120777	Medium Height Adjustable 8° Bend with Push Handle Non-Folding Backrest Kit Transit Liberty (Pair)	1
1, 8, 10, 13, 14, 15c, 16, 19-21, 23, 26, 27a, 27b, 28, 29a	120766	Tall Height Adjustable 8° Bend with Push Handle Non-Folding Backrest Kit Liberty (Pair)	1
1, 8, 10, 13, 14, 15c, 16, 19-21, 23, 26, 27a, 27b, 28, 29b	120778	Tall Height Adjustable 8° Bend with Push Handle Non-Folding Backrest Kit Transit Liberty (Pair)	1
1, 3-9, 14, 15a, 16, 18, 19, 22-24, 26	506330	Backpost Assembly Short Height Adjustable 8° Bend with Push Handle, Folding, Liberty	1
1, 3-9, 14, 15b, 16, 18, 19, 22-24, 26	506331	Backpost Assembly Medium Height Adjustable 8° Bend with Push Handle, Folding, Liberty	1
1, 3-9, 14, 15c, 16, 18, 19, 22-24, 26	506332	Backpost Assembly Tall Height Adjustable 8° Bend with Push Handle, Folding, Liberty	1
1, 8, 14, 15a, 16, 19, 23, 26, 28	506169	Backpost Assembly Short Height Adjustable 8° Bend with Push Handle, Non-Folding, Liberty	1
1, 8, 14, 15b, 16, 19, 23, 26, 28	506170	Backpost Assembly Medium Height Adjustable 8° Bend with Push Handle, Non-Folding, Liberty	1

Item Number	Part Number	Description	Quantity
1, 8, 14, 15c, 16, 19, 23, 26, 28	506171	Backpost Assembly Tall Height Adjustable 8° Bend with Push Handle, Non-Folding, Liberty	1
1, 14, 23, 28	506317	Lower Back Tube Assembly Height Adjustable, Non-Folding, Liberty	1
1, 3-7, 9, 14, 17, 18, 22-24	506318	Lower Back Tube Assembly Height Adjustable, Folding, Liberty	1
8, 15a, 16, 19, 26	506319	Upper Back Tube Assembly Height Adj, 8 Deg, Short	1
8, 15b, 16, 19, 26	506320	Upper Back Tube Assembly Height Adj, 8 Deg, Medium	1
8, 15c, 16, 19, 26	506321	Upper Back Tube Assembly HeightAdj, 8 Deg, Tall	1
3-7, 9, 10, 11a, 12a, 12b, 13, 17, 18, 20-22, 24, 25	506164	Folding Backrest Hardware PAIR Kit, Liberty  <i>Used to retrofit from non-folding to folding</i>	1
3-7, 9, 10, 11b, 12a, 12b 13, 17, 18, 20-22, 24, 25	506165	Folding Backrest Hardware PAIR Kit, Transit, Liberty  <i>Used to retrofit from non-folding to folding.</i>	1
10, 13, 20, 21, 27a, 27b, 28, 29a	506163	Non-Folding Backrest Hardware PAIR Kit, Liberty  <i>Used to retrofit from folding to non-folding</i>	1
10, 13, 20, 21, 27a, 27b, 28, 29b	120794	Non-Folding Backrest Hardware PAIR Kit, Transit, Liberty  <i>Used to retrofit from non-folding to folding</i>	1
10, 11a, 12a, 12b 13, 17, 20, 21, 25	120795	Folding Backplates w/Hardware Liberty (Pair)	1
10, 11b, 12a, 12b 13, 17, 20, 21, 25	120796	Folding Backplates w/Hardware Transit Liberty (Pair)	1
10, 13, 20, 21, 27a, 27b, 29a	112924	Non-Folding Backplates w/Hardware Liberty (Pair)	1
10, 13, 20, 21, 27a, 27b, 29b	120797	Non-Folding Backplates w/Hardware Transit Liberty (Pair)	1
1	001083	Bushing Height Adjustable Back Tilt	1
2	001239	P-Clip 3/16"	1
3	001893	Latch Lever, Backrest	1
4, 7	503834	Cover Plate, Latch Insert Kit	1
5	001895	Latch Insert, Folding Backrest	1
6	001896	Spring, Backrest Latch	1
7	001897	Washer, Dual, PSA	2

Item Number	Part Number	Description	Quantity
8	109433	Ergo Push Handle Grip 7/8" Standard with Instruction	1
9	002513	Threaded Barrel, 5mm OD x M4	1
10	003284	Binding Post, 8mm x 40mm x M6	1
11a	003307	Back Plate, Outer, Folding	1
11b	506322	Transit Back Plate Folding, Liberty	1
12a	003308	Back Plate, Inner, Folding, Right	1
12b	003309	Back Plate, Inner, Folding, Left	1
13	003312	Saddle, Seat Tube	2
16, 26	112386	Threaded Insert, M6, with O-Ring, Liberty	1
17	100658	M6 Nylock Nut Blk Zn	8
18	100797	M6 x 40 BHCS BLK ZC	1
19	100803	Tube End Plug 7/8"	1
20	101184	M6 x 10 BTN SHCS BLKZC w/Patch	1
21	101781	M6 x 50mm Partial Thread BHCS Blk ZC	3
22	101818	M4 x 10 FHCS BLKZC w/Patch	2
23	101823	M6 X 20 Hhcs Blk Zn	1
24	102694	Dowel Pin, M5 X 24, Blk Zn	1
25	102803	Washer Flat .250 X .500 X .027 Hx Blz	2
27a	003305	Back Plate, Inner, Non-Folding, Right	1
27b	003306	Back Plate, Inner, Non-Folding, Left	1
28	003310	Receiver, Back Cane, Ht Adj	1
29a	003304	Back Plate, Outer, Non-Folding	1
29b	506564	Transit Back Plate Non-Folding, Liberty	1