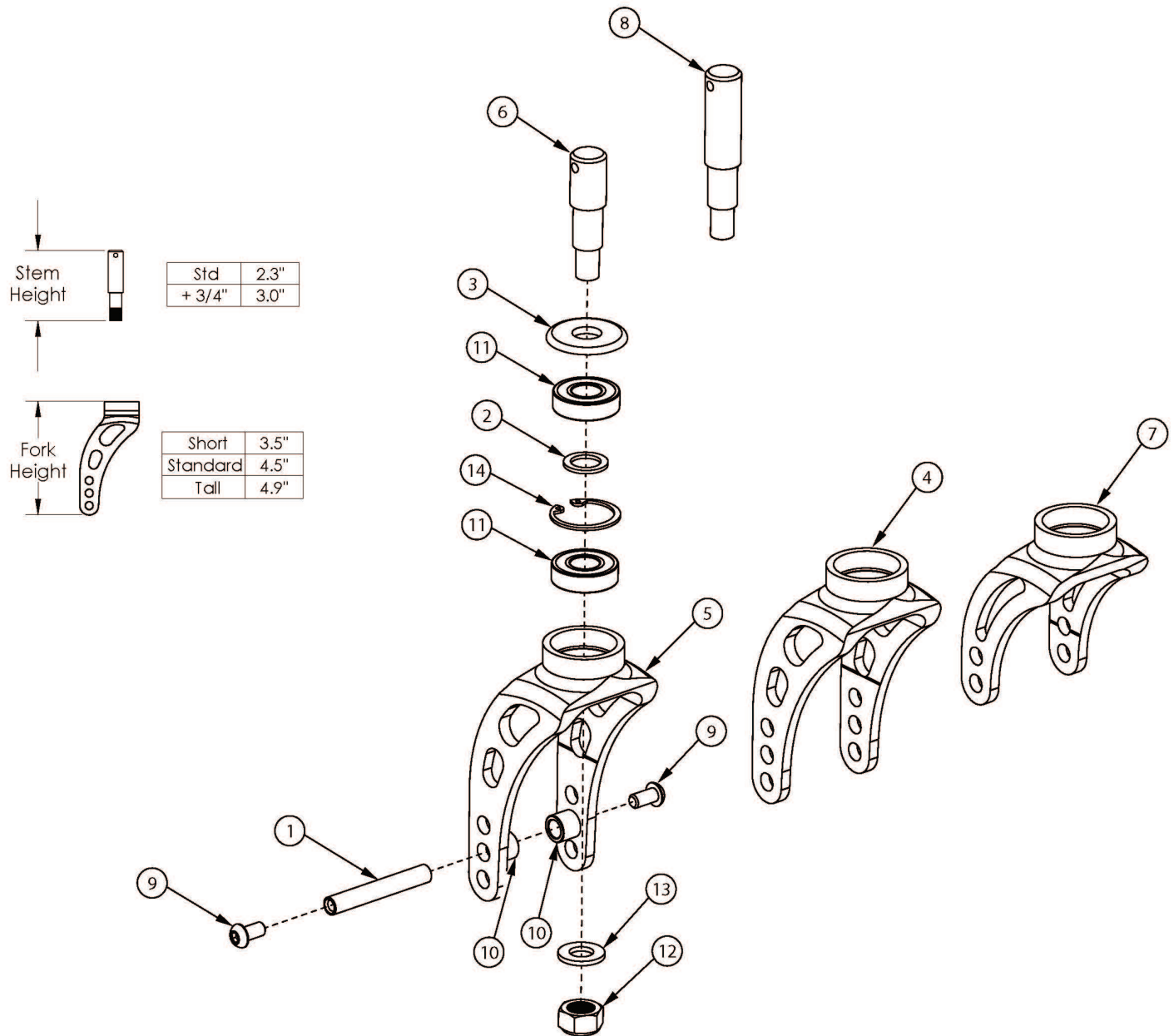


# Rogue / Klik Caster Forks and Stems



Item Number	Part Number	Description	Quantity
2, 3a, 7a, 6, 11-14	107303	Short Rigid Fork Streamline Assembly with Std Stem, Black Anodized <i>When replacing this fork, order quantity 2 due to design change.</i>	1
2, 3b, 7b, 6, 11-14	107304_ _ _	Short Rigid Fork Streamline Assembly with Std Stem, Color Anodized	1
2, 3a, 7a, 8, 11-14	107305	Short Rigid Fork Streamline Assembly with +3/4 Stem, Black Anodized <i>When replacing this fork, order quantity 2 due to design change.</i>	1
2, 3b, 7b, 8, 11-14	107306_ _ _	Short Rigid Fork Streamline Assembly with +3/4 Stem, Color Anodized	1

Item Number	Part Number	Description	Quantity
2, 3a, 4a, 6, 11-14	107307	Standard Rigid Fork Streamline Assembly with Std Stem, Black Anodized <i>When replacing this fork, order quantity 2 for chairs shipped prior to 12/20/18 due to design change.</i>	1
2, 3b, 4b, 6, 11-14	107308_ _ _	Standard Rigid Fork Streamline Assembly with Std Stem, Color Anodized	1
2, 3a, 4a, 8, 11-14	107309	Standard Rigid Fork Streamline Assembly with +3/4 Stem, Black Anodized <i>When replacing this fork, order quantity 2 for chairs shipped prior to 12/20/18 due to design change.</i>	1
2, 3b, 4b, 8, 11-14	107310_ _ _	Standard Rigid Fork Streamline Assembly with +3/4 Stem, Color Anodized	1
2, 3a, 5a, 6, 11-14	107311	Tall Rigid Fork Streamline Assembly with Std Stem, Black Anodized <i>When replacing this fork, order quantity 2 for chairs shipped prior to 1/16/19 due to design change.</i>	1
2, 3b, 5b, 6, 11-14	107312_ _ _	Tall Rigid Fork Streamline Assembly with Std Stem, Color Anodized	1
2, 3a, 5a, 8, 11-14	107313	Tall Rigid Fork Streamline Assembly with +3/4 Stem, Black Anodized <i>When replacing this fork, order quantity 2 for chairs shipped prior to 1/16/19 due to design change.</i>	1
2, 3b, 5b, 8, 11-14	107314_ _ _	Tall Rigid Fork Streamline Assembly with +3/4 Stem, Color Anodized	1
2, 4a, 11-14	004354INST	Standard Rigid Fork Streamline Assembly, Black Anodized with Instruction <i>When replacing this fork, order quantity 2 for chairs shipped prior to 12/20/18 due to design change. Previous part number 000927INST.</i>	1
2, 4b, 11-14	004354_ _ _	Standard Rigid Fork Streamline Assembly, Color Anodized <i>Previous part number 000927_ _ _</i>	1
2, 5a, 11-14	004362INST	Tall Rigid Fork Streamline Assembly, Black Anodized with Instruction <i>When replacing this fork, order quantity 2 for chairs shipped prior to 1/16/19 due to design change. Previous part number 000928INST.</i>	1
2, 5b, 11-14	004362_ _ _	Tall Rigid Fork Streamline Assembly, Color Anodized <i>Previous part number 000928_ _ _</i>	1
6, 12	004111INST	Fork Stem Streamline, Standard with Instruction <i>Previous part number 000929INST</i>	1
2, 7a, 11-14	004361INST	Short Rigid Fork Streamline Assembly, Black Anodized with Instruction <i>When replacing this fork, order quantity 2 due to design change. Previous part number 001812INST.</i>	1
2, 7b, 11-14	004361_ _ _	Short Rigid Fork Streamline Assembly, Color Anodized <i>Previous part number 001812_ _ _</i>	1
1, 9-10	116069	Caster Attachment Hardware Kit, Rigid	1
1	000422	M6 x 56 Threaded Barrel	1
3a	001355	Caster Bearing Cap Black Anodized	1

Item Number	Part Number	Description	Quantity
3b	001355_ _ _	Color Anodized Caster Bearing Cap	1
8, 12	004371INST	Fork Stem Streamline +3/4" with Instruction <i>Previous part number 000930INST</i>	1
9	100667	M6 x 12 BTN SHCS BLKZC w/Patch	2
10	100792	Caster Spacer D8 x D12 x 10mm / Close Mount Handrim Spacer	2
12	101840	M10 Nylock Nut Blk Zn	1
13	101859	M10 Flat Washer Blk Zn	1

# Color Anodizing Samples

