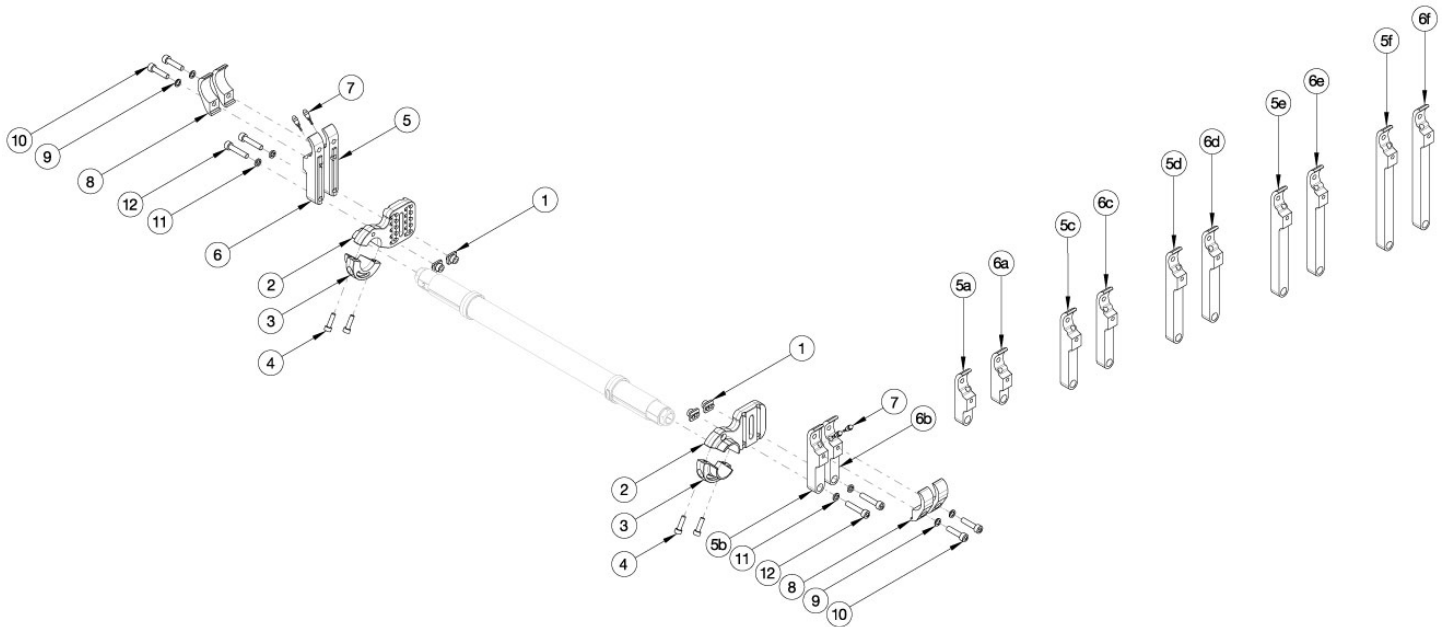


Rogue2 Amputee Camber Mount



Please contact Customer Service if "Rear Inner Tower Clamps" are needed. If ordering "Rear Inner Tower Clamps", detent buttons (001788) are required. Used when center of gravity is between -1.5" and 0.25".

Item Number	Part Number	Description	Quantity
1, 2a, 3, 4, 8a-12	117504	Rear Tower Assembly Amputee, Black, Right, Rogue2	1
1, 2a, 3, 4, 8b-12	117504_ _ _	Rear Tower Assembly Amputee, Anodized, Right, Rogue2	1
1, 2b, 3, 4, 8a-12	117505	Rear Tower Assembly Amputee, Black, Left, Rogue2	1
1, 2b, 3, 4, 8b-12	117505_ _ _	Rear Tower Assembly Amputee, Anodized, Left, Rogue2	1
1, 2a, 2b, 3, 4, 8a-12	117506	Rear Tower Assembly Amputee, Black, Pair, Rogue2	1
1, 2a, 2b, 3, 4, 8b-12	117506_ _ _	Rear Tower Assembly Amputee, Anodized, Pair, Rogue2	1
5a	114004	Rear Tower Inner Index Clamp 2.125", Black, Right	2
5a	114004_ _ _	Rear Tower Inner Index Clamp 2.125", Anodized, Right	2
5b	114005	Rear Tower Inner Index Clamp 2.875", Black, Right	2
5b	114005_ _ _	Rear Tower Inner Index Clamp 2.875", Anodized, Right	2
5c	114006	Rear Tower Inner Index Clamp 3.625", Black, Right	2
5c	114006_ _ _	Rear Tower Inner Index Clamp 3.625", Anodized, Right	2
5d	114007	Rear Tower Inner Index Clamp 4.500", Black, Right	2

Item Number	Part Number	Description	Quantity
5d	114007_ _ _	Rear Tower Inner Index Clamp 4.500", Anodized, Right	2
5e	114008	Rear Tower Inner Index Clamp 5.375", Black, Right	2
5e	114008_ _ _	Rear Tower Inner Index Clamp 5.375", Anodized, Right	2
5f	114009	Rear Tower Inner Index Clamp 6.250", Black, Right	2
5f	114009_ _ _	Rear Tower Inner Index Clamp 6.250", Anodized, Right	2
6a	114034	Rear Tower Inner Index Clamp 2.125", Black, Left	2
6a	114034_ _ _	Rear Tower Inner Index Clamp 2.125", Anodized, Left	2
6b	114035	Rear Tower Inner Index Clamp 2.875", Black, Left	2
6b	114035_ _ _	Rear Tower Inner Index Clamp 2.875", Anodized, Left	2
6c	114036	Rear Tower Inner Index Clamp 3.625, Black, Left	2
6c	114036_ _ _	Rear Tower Inner Index Clamp 3.625, Anodized, Left	2
6d	114037	Rear Tower Inner Index Clamp 4.500", Black, Left	2
6d	114037_ _ _	Rear Tower Inner Index Clamp 4.500", Anodized, Left	2
6e	114038	Rear Tower Inner Index Clamp 5.375", Black, Left	2
6e	114038_ _ _	Rear Tower Inner Index Clamp 5.375", Anodized, Left	2
6f	114039	Rear Tower Inner Index Clamp 6.250", Black, Left	2
6f	114039_ _ _	Rear Tower Inner Index Clamp 6.250", Anodized, Left	2
7	001788	Button Assembly	2
8a	114003	Rear Tower Outer Clamp, Black	4
8b	114003_ _ _	Rear Tower Outer Clamp, Anodized	4
9	102326	Flat Washer ID .254" x OD .396" Thickness .047" Zinc	2
10	100780	M6 x 25 SHCS ZC	2
11	102810	M6 Lockwasher, Hi-Collar, ZC	2
12	102627	M6 X 30 SHCS BLK ZC	2