



Please read these instructions carefully before beginning the assembly. Failure to understand and follow these instructions may result in injury to technician and/or end user and may void the warranty. If you have any questions call Sunrise Medical Technical support at 800-333-4000.

Parts in this Transit Kit:

- | | |
|--------------------------|--------------------------|
| 1. 1x Canopy | 7. 2x Canopy Clamp |
| 2. 2x Inner Clamp | 8. 12x M6x1x16 SH Screw |
| 3. 2x Outer Clamp | 9. 4x M6x1 Nylock Nut |
| 4. 2x Swivel Pin | 10. 4x M6x1x16 |
| 5. 2x Canopy post | 11. 4x M5 Washer |
| 6. 2x Canopy Mount Block | 12. 8x M5x.8x25 SH Screw |

2. Tools needed:

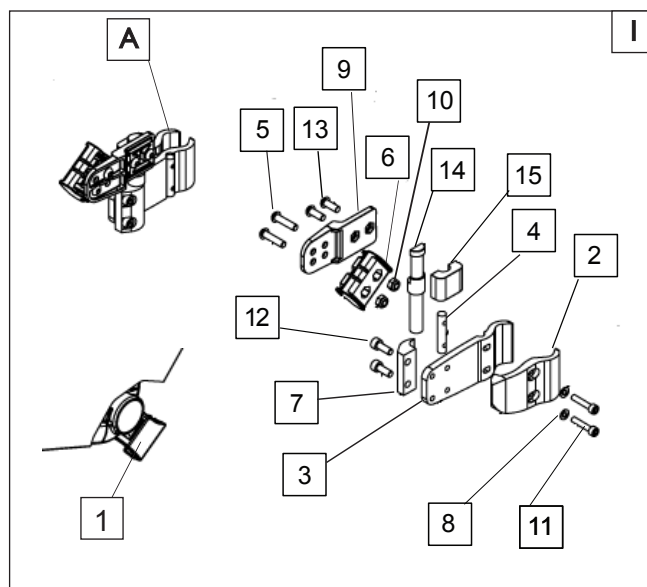
- 4mm hex key
- 5mm hex Key



A. CANOPY BRACKET ASSEMBLY (10-17")

1. Canopy Bracket Assembly

- Using a 5mm hex key, assemble parts 5, 6, 9 and 10. This is the mount block that the canopy will attach to.
- Using a 5mm hex key, assemble parts 13, 14 and 15 (post clamp assembly).
- Using a 4mm hex key, assemble parts 3, 4, 7, and 12 (outer clamp assembly).
- Using a 4mm hex key, assemble parts 2, 8, and 11 (inner clamp assembly) and attach it to the backcane/stroller handle and outer clamp assembly as shown.
- Keep the canopy clamp assembly (A) loose until the other side is assembled and attached,
- Check the height by attaching the canopy (I) and adjusting both of the clamp assemblies until they are the same height, and clear of obstructions.
- You can now secure the clamps with the 4mm hex key making sure to tighten both screws a few turns each, so that the clamp tightens evenly around the back cane.



B. CANOPY BRACKET ASSEMBLY (18-20")

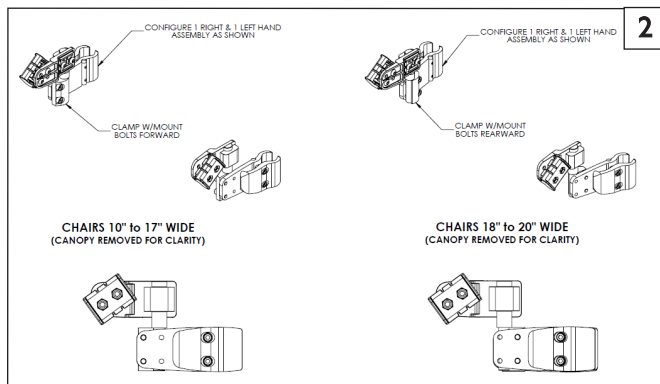
2. Install the Clamp and Hardware Assembly

- The assembly and procedures are the same as shown in Instruction A, except that the canopy post clamps (7) are mounted in rear 2 holes and post (5) is in the forward locations.

C. CHECKOUT

3. Double-check Orientation and Tighten All Hardware

- Make sure the canopy does not interfere with the rider, and all hardware is tightened.
- Check that the clamps have been installed at the same height on the back canes from side to side.



Sunrise Medical • 2842 Business Park Ave. • Fresno, CA 93727 • USA
In Canada (800) 263-3390