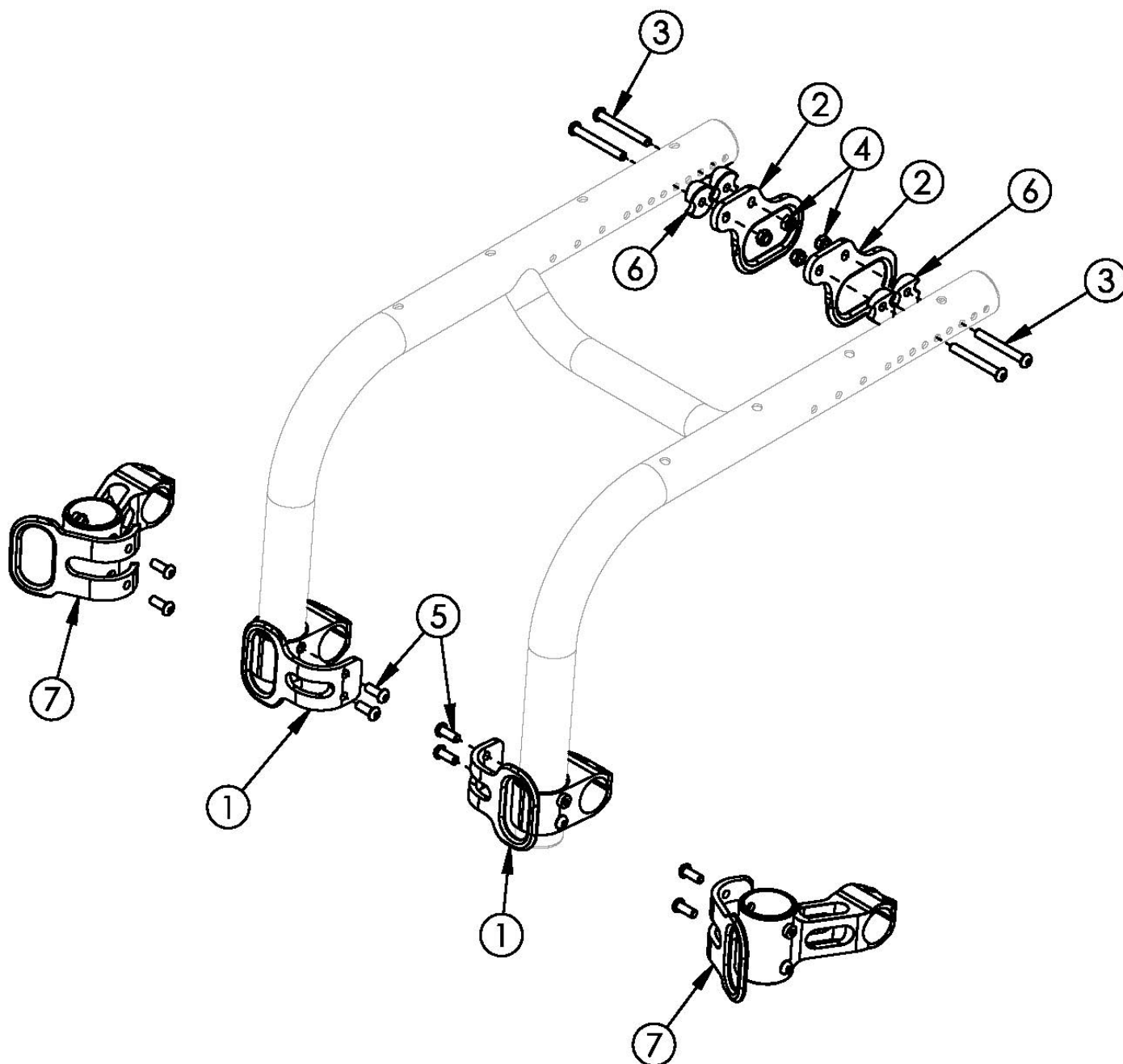


Little Wave XP Transit



Notice: Chair configuration review required prior to parts being quoted or ordered. 125 pound maximum weight capacity with transit system. If transit is present and changing from pediatric to standard caster mounts, new front transit brackets are required

Item Number	Part Number	Description	Quantity
1 - 6	506839	Transit Bracket Retrofit Kit for Pediatric Caster Mounts, RG ALX <i>This kit is a complete retrofit, containing a pair of front and rear transit brackets and hardware.</i>	1
2 - 7	506838	Transit Bracket Retrofit Kit for Standard Caster Mounts, RG ALX	1

Item Number	Part Number	Description	Quantity
		<i>This kit is a complete retrofit, containing a pair of front and rear transit brackets and hardware.</i>	
3	003232	M6 x 55 BHCS Blk Zc	4
4	100658	M6 Nylock Nut Blk Zn	4
5	101708	M6 x 14 BTN SHCS BLKZC w/Patch	4
6	000248	Saddle 1.375"	4