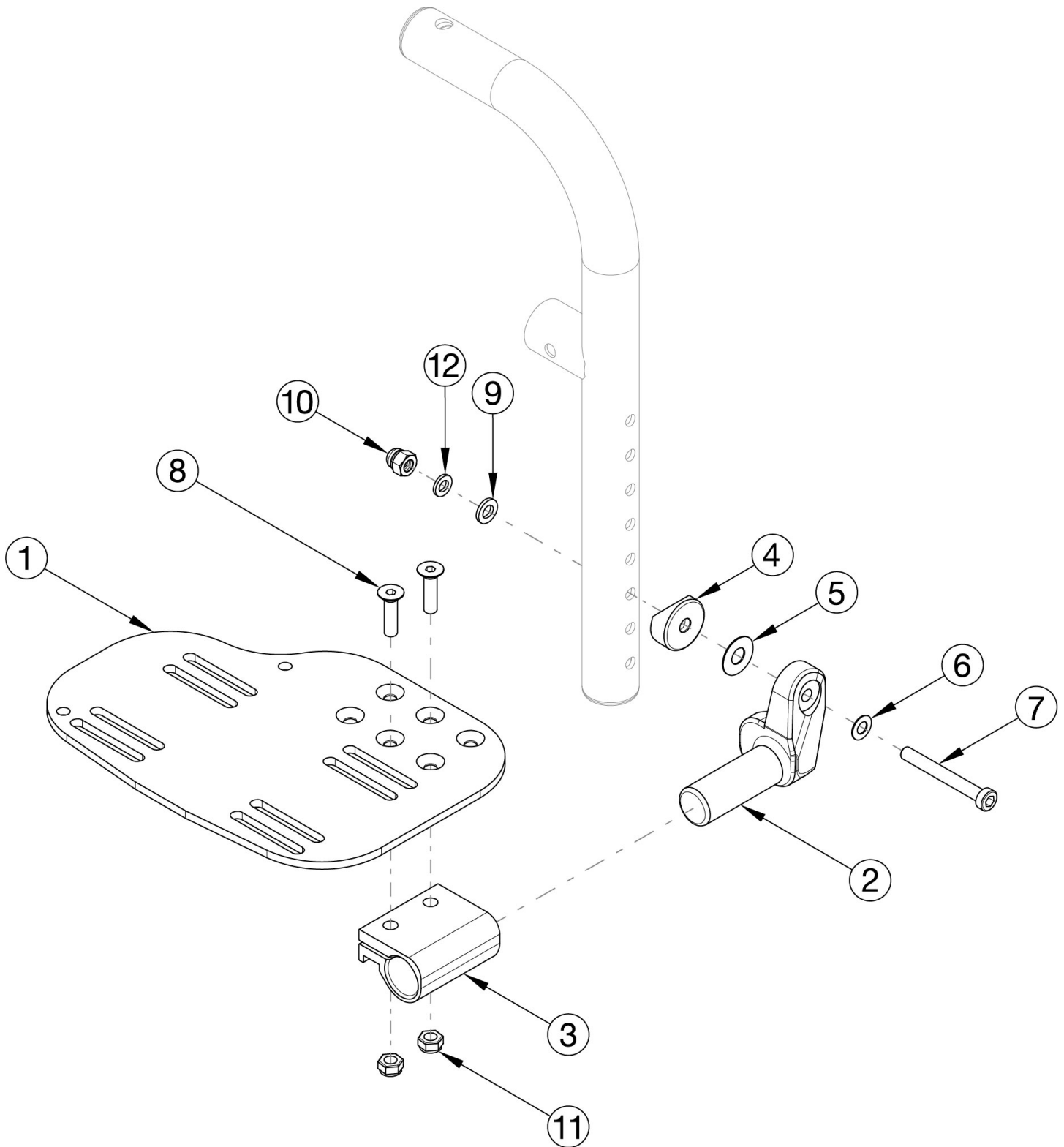


CR45 Footplates - Angle Adjustable Front Mount



Sizes for footplates/assemblies are based on seat width.

| Item Number | Part Number | Description | Quantity |
|----------------------|-------------|--|----------|
| 2b, 3-12 | 502214 | Footplate Hardware Kit Angle Adjustable for Front Mount Hanger Left | 1 |
| 2a, 3-12 | 502215 | Footplate Hardware Kit Angle Adjustable for Front Mount Hanger Right | 1 |
| 2a, 2b, 3-12 | 502216 | Footplate Hardware Kit Angle Adjustable for Front Mount Hanger Pair | 1 |
| 1a, 2b, 3-12 | 501055 | Footplate Angle Adjustable Front Mount Assembly 14-15 Wide Left | 1 |
| 1b, 2a, 3-12 | 501056 | Footplate Angle Adjustable Front Mount Assembly 14-15 Wide Right | 1 |
| 1a, 1b, 2a, 2b, 3-12 | 501057 | Footplate Angle Adjustable Front Mount Assembly 14-15 Wide Pair | 1 |
| 1c, 2b, 3-12 | 501058 | Footplate Angle Adjustable Front Mount Assembly 16-17 Wide Left | 1 |
| 1d, 2a, 3-12 | 501059 | Footplate Angle Adjustable Front Mount Assembly 16-17 Wide Right | 1 |
| 1c, 1d, 2a, 2b, 3-12 | 501060 | Footplate Angle Adjustable Front Mount Assembly 16-17 Wide Pair | 1 |
| 1e, 2b, 3-12 | 501061 | Footplate Angle Adjustable Front Mount Assembly 18-24 Wide Left | 1 |
| 1f, 2a, 3-12 | 501062 | Footplate Angle Adjustable Front Mount Assembly 18-24 Wide Right | 1 |
| 1e, 1f, 2a, 2b, 3-12 | 501063 | Footplate Angle Adjustable Front Mount Assembly 18-24 Wide Pair | 1 |
| 1a, 2b, 3-12 | 502205 | Footplate Kit Angle Adjustable w/ Heel Loop for Front Mount Hanger 14-15 Wide Left <i>Heel Loop with attaching hardware is included but not pictured</i> | 1 |
| 1b, 2a, 3-12 | 502206 | Footplate Kit Angle Adjustable w/ Heel Loop for Front Mount Hanger 14-15 Wide Right <i>Heel Loop with attaching hardware is included but not pictured</i> | 1 |
| 1a, 1b, 2a, 2b, 3-12 | 502207 | Footplate Kit Angle Adjustable w/ Heel Loop for Front Mount Hanger 14-15 Wide Pair <i>Heel Loop with attaching hardware is included but not pictured</i> | 1 |
| 1c, 2b, 3-12 | 502208 | Footplate Kit Angle Adjustable w/ Heel Loop for Front Mount Hanger 16-17 Wide Left <i>Heel Loop with attaching hardware is included but not pictured</i> | 1 |
| 1d, 2a, 3-12 | 502209 | Footplate Kit Angle Adjustable w/ Heel Loop for Front Mount Hanger 16-17 Wide Right <i>Heel Loop with attaching hardware is included but not pictured</i> | 1 |
| 1c, 1d, 2a, 2b, 3-12 | 502210 | Footplate Kit Angle Adjustable w/ Heel Loop for Front Mount Hanger 16-17 Wide Pair <i>Heel Loop with attaching hardware is included but not pictured</i> | 1 |
| 1e, 2b, 3-12 | 502211 | Footplate Kit Angle Adjustable w/ Heel Loop for Front Mount Hanger 18-24 Wide Left <i>Heel Loop with attaching hardware is included but not pictured</i> | 1 |
| 1f, 2a, 3-12 | 502212 | Footplate Kit Angle Adjustable w/ Heel Loop for Front Mount Hanger 18-24 Wide Right <i>Heel Loop with attaching hardware is included but not pictured</i> | 1 |

| Item Number | Part Number | Description | Quantity |
|-------------------------|-------------|---|----------|
| 1e, 1f, 2a, 2b, 3-12 | 502213 | Footplate Kit Angle Adjustable w/ Heel Loop for Front Mount Hanger 18-24 Wide Pair <i>Heel Loop with attaching hardware is included but not pictured</i> | 1 |
| 1a | 000105 | Footplate Angle Adjustable 14-15" Wide CAT/TILT Left (Std ELR Right) | 1 |
| 1b | 000106 | Footplate Angle Adjustable 14-15" Wide CAT/TILT Right (Std ELR Left) | 1 |
| 1c | 000107 | Footplate Angle Adjustable 16-17" Wide CAT/TILT Left (Std ELR Right) | 1 |
| 1d | 000108 | Footplate Angle Adjustable 16-17" Wide CAT/TILT Right (Std ELR Left) | 1 |
| 1e | 000109 | Footplate Angle Adjustable 18-24" Wide CAT/TILT Left (Std ELR Right) | 1 |
| 1f | 000110 | Footplate Angle Adjustable 18-24" Wide CAT/TILT Right (Std ELR Left) | 1 |
| 2a | 000048 | Footplate Angle Adj Casting 1" Right | 1 |
| 2b | 000050 | Footplate Angle Adj Casting 1" Left | 1 |
| 3.0 | 100502 | Angle Adj Footplate Clamp 2" | 1 |
| 4.0 | 000055 | Saddle 1" | 1 |
| 5.0 | 000428 | Wear Washer | 1 |
| 6.0 | 101455 | M6 Belleville Washer (.252 x .551 x .050) | 1 |
| 7.0 | 101124 | M6 x 50 Low SHCS BLK ZC | 1 |
| 8.0 | 100662 | M6 x 25 FSHCS BLK ZC | 2 |
| 9.0 | 100746 | M6 Flat Washer Blk Zn | 1 |
| 10.0 | 100558 | M6 NYL INS Domed Cap L/N ZC | 1 |
| 11.0 | 100658 | M6 Nylock Nut Blk Zn | 2 |
| 12.0 | 102072 | Washer Nylon .234 ID x .406 OD x .062 Thick | 1 |