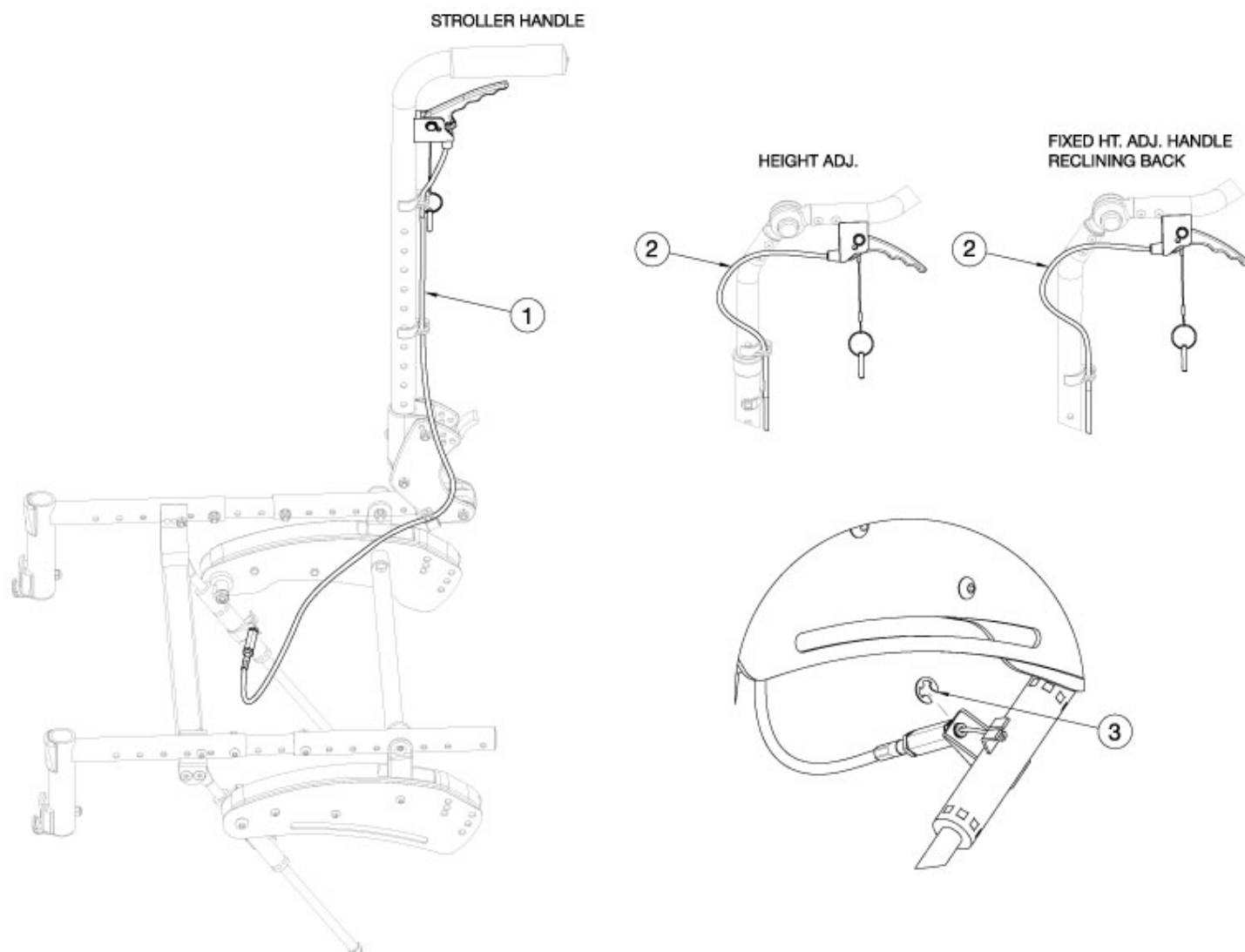


Flip Hand Tilt - Growth



Has your depth changed? If yes, please review the notes below the tilt cable part numbers to determine if a new hand tilt cable is necessary.

Item Number	Part Number	Description	Quantity
1a, 3	502830	Cable, Hand Tilt, Extra Short FLIP <i>Used on 12-13" deep chairs with Short Stroller Handle backrests or 12-13" deep chairs with Short Reclining backrest.</i>	1
1b, 3	502831	Cable, Hand Tilt, Short FLIP <i>Used on 12-16" deep chairs with Tall Stroller Handle backrests or 12-16" deep chairs with Tall Reclining backrests. Used on 14-20" deep chairs with Short Stroller Handle backrests or 14-20" deep chairs with Short Reclining backrests.</i>	1
1c, 3	503164	Cable, Hand Tilt, Medium FLIP	1

Item Number	Part Number	Description	Quantity
		<i>Used on 17-19" deep chairs with Tall Stroller Handle backrests or 17-19" deep chairs with Tall Reclining backrest.</i>	
2a, 3	502832	Cable, Hand Tilt, Long FLIP <i>Used on 20" deep chairs with Tall Stroller Handle backrests or 20" deep chairs with Tall Reclining backrest. Used on Short Adjustable Height w/ Adjustable Handle backrests and Short Fixed Height w/ Adjustable Handle backrests.</i>	1
2b, 3	502833	Cable, Hand Tilt, Extra Long FLIP <i>Used on Tall Adjustable Height w/ Adjustable Handle backrests and Tall Fixed Height w/ Adjustable Handle backrests.</i>	1