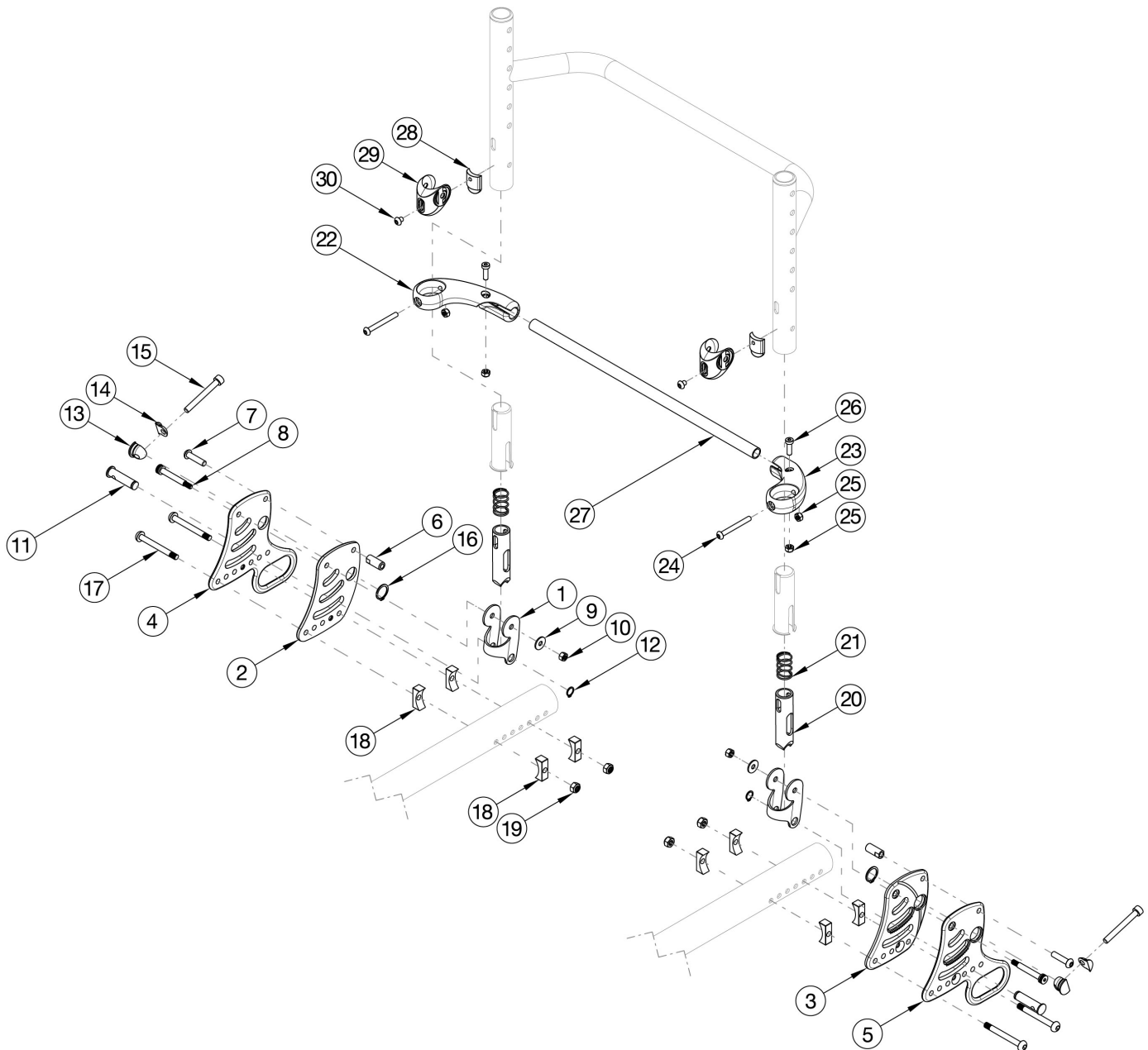


Rogue Backrest Mount and Hardware



This is a new part called: Rigid Locking Fold Down Back. If invoice doesn't state this option, a complete retrofit is needed. For a complete retrofit, select a Back Plate and Hardware Kit PAIR and Backrest Actuation Bar SUBASSEMBLY kit based on width. If retrofitting to this backrest style, new back frames and backrest tubes are required. If retrofitting and swing away arms are present, new receivers and armrests are needed.

Item Number	Part Number	Description	Quantity
1, 2a, 3a, 6 - 21, 28 - 30	117288	Back Plate and Hardware, Non-Transit, Black, Rogue, PAIR	1
1, 2a, 6 - 19	116894	Back Plate and Hardware, Non-Transit, Black, Right, Rogue	1

Item Number	Part Number	Description	Quantity
1, 3a, 6 - 19	116895	Back Plate and Hardware, Non-Transit, Black, Left, Rogue	1
1, 2b, 3b, 6 - 21, 28 -30	117290_ _ _	Back Plate and Hardware, Non-Transit, Color Anodized/Color Accent, Rogue, PAIR	1
1, 2b, 6 - 19	116916_ _ _	Back Plate and Hardware, Non Transit, Color Anodized/Color Accent, Right, Rogue	1
1, 3b, 6 - 19	116917_ _ _	Back Plate and Hardware, Non Transit, Color Anodized/Color Accent, Left, Rogue	1
1, 4 - 21, 28 - 30	117289	Back Plate and Hardware, Transit, Black, Rogue, PAIR	1
1, 4, 6 - 19	116896	Back Plate and Hardware, Transit, Black, Right, Rogue	1
1, 5 - 19	116897	Back Plate and Hardware, Transit, Black, Left, Rogue	1
28 - 30	116876	Relax Subassembly	1
22, 24 - 26	116877	Release Lever with Fasteners, Right	1
23 - 26	116878	Release Lever with Fasteners, Left	1
22 - 26, 27a	116879	Backrest Actuation Bar Subassembly w/ Release Levers and Fasteners, 12" Wide, Black	1
22 - 26, 27b	116880	Backrest Actuation Bar Subassembly w/ Release Levers and Fasteners, 13" Wide, Black	1
22 - 26, 27c	116881	Backrest Actuation Bar Subassembly w/ Release Levers and Fasteners, 14" Wide, Black	1
22 - 26, 27d	116882	Backrest Actuation Bar Subassembly w/ Release Levers and Fasteners, 15" Wide, Black	1
22 - 26, 27e	116883	Backrest Actuation Bar Subassembly w/ Release Levers and Fasteners, 16" Wide, Black	1
22 - 26, 27f	116884	Backrest Actuation Bar Subassembly w/ Release Levers and Fasteners, 17" Wide, Black	1
22 - 26, 27g	116885	Backrest Actuation Bar Subassembly w/ Release Levers and Fasteners, 18" Wide, Black	1
22 - 26, 27h	116886	Backrest Actuation Bar Subassembly w/ Release Levers and Fasteners, 19" Wide, Black	1
22 - 26, 27i	116887	Backrest Actuation Bar Subassembly w/ Release Levers and Fasteners, 20" Wide, Black	1
2a	115550	Back Plate, Right, Black	1
2b	115550_ _ _	Color Anodized/Color Accent Back Plate, Right	1
3a	115551	Back Plate, Left, Black	1
3b	115551_ _ _	Color Anodized/Color Accent Back Plate, Left	1
4	115552	Back Plate, Transit, Right, Black	1
5	115553	Back Plate, Transit, Left, Black	1
6	115546	Strike, Ø.364	2
7	115573	M6 x 25, BHCS, CLS 10.9, NYL, BLZ	2

Item Number	Part Number	Description	Quantity
8	103284	M6 x 35 Shoulder Bolt BZ	2
9	103022	M5 Washer, Blk Zn	2
10	103283	M5 Top Lock Nut BZ	2
12	115570	Eternal Retaining Ring, 3/8"	2
15	115545	M6 x 1.0 x 50 SHCS, FT, NYL, BLZ	2
16	115571	Eternal Retaining Ring, 5/8"	2
17	003232	M6 x 55 BHCS Blk Zc	2
18	116329	Rigid Backrest Saddle, Narrow, 1.375"	8
19	100658	M6 Nylock Nut Blk Zn	4
20	115539	Release Pin	2
21	115547	Compression Spring, .66" OD x 1" LG	2
24	000142	M5 x 45 BHCS, P/THD, BLZ	1
25	100657	M5 Nylock Nut Blk Zn	2
26	102801	M5 x 16, Low SHCS, Blk Zn	4
27a	115554	Backrest Actuation Bar, 12" Wide, Black	1
27b	115555	Backrest Actuation Bar, 13" Wide, Black	1
27c	115556	Backrest Actuation Bar, 14" Wide, Black	1
27d	115557	Backrest Actuation Bar, 15" Wide, Black	1
27e	115558	Backrest Actuation Bar, 16" Wide, Black	1
27f	115559	Backrest Actuation Bar, 17" Wide, Black	1
27g	115560	Backrest Actuation Bar, 18" Wide, Black	1
27h	115561	Backrest Actuation Bar, 19" Wide, Black	1
27i	115562	Backrest Actuation Bar, 20" Wide, Black	1
28	115549	Relax Bumper	2
29	115548	Relax Saddle	2
30	115572	M5 x 0.8 x 6 BHCS BLZ, CLS 10.9	2