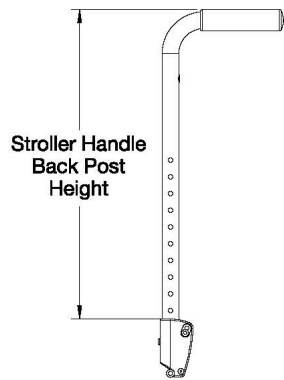
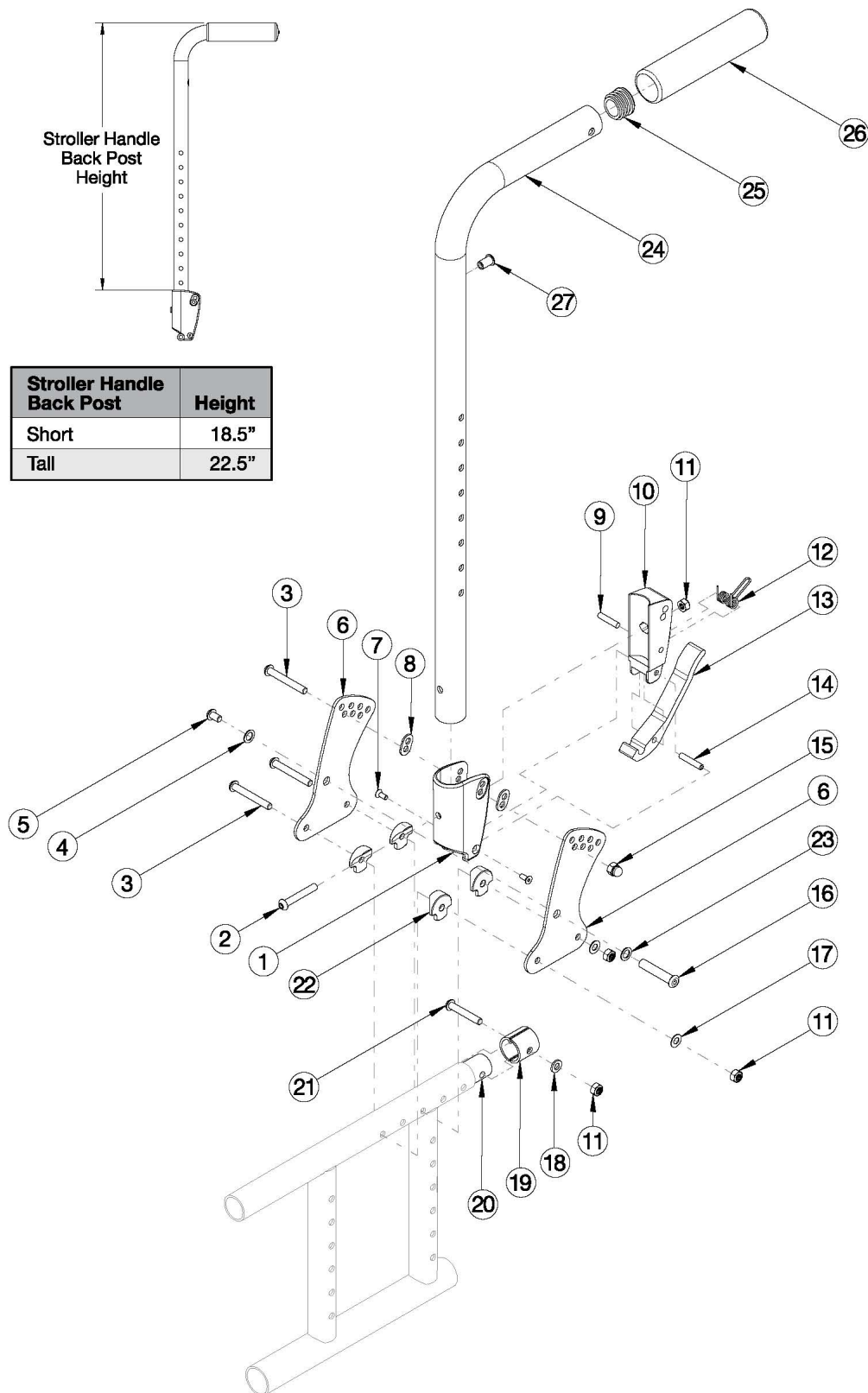


# Spark Stroller Handle Back Post



Stroller Handle Back Post	Height
Short	18.5"
Tall	22.5"



This backrest style was released February 8th, 2021

Item Number	Part Number	Description	Quantity
1-20, 22, 23, 24a, 25, 26, 27	112601	Stroller Handle Back Post with Grip Assembly with All Hardware, for Seating Cross Braces, Short	1
1-20, 22, 23, 24b, 25, 26, 27	112602	Stroller Handle Back Post with Grip Assembly with All Hardware, for Seating Cross Braces, Tall	1
24a, 25, 26, 27	506811	Stroller Handle Back Post with Grip Assembly, Short	1
24b, 25, 26, 27	506812	Stroller Handle Back Post with Grip Assembly, Tall	1
1-19, 21, 22, 23	112604	Depth Adjustable Backrest Hardware Assembly, for Seating Cross Braces Right	1
1-19, 21, 22, 23	112605	Depth Adjustable Backrest Hardware Assembly, for Seating Cross Braces Left	1
1-19, 21, 22, 23	112606	Depth Adjustable Backrest Hardware Assembly, for Seating Cross Braces, PAIR	1
1, 8	503834	Cover Plate, Latch Insert Kit	1
2	100797	M6 x 40 BHCS BLK ZC	1
3	100670	M6 x 45 BTN SHCS BLK ZC	3
4	101701	Washer 3.315/.350 x .425/.525 x .059/.067 18-8 F/W	1
5	101184	M6 x 10 BTN SHCS BLKZC w/Patch	1
6	111833	Depth Adjustable Back Plate, Folding	2
7	101818	M4 x 10 FHCS BLKZC w/Patch	2
8	001897	Washer, Dual, PSA	2
9	102694	Dowel Pin, M5 X 24, Blk Zn	1
10	001895	Latch Insert, Folding Backrest	1
11	100658	M6 Nylock Nut Blk Zn	4
12	001896	Spring, Backrest Latch	1
13	001893	Latch Lever, Backrest	1
14	002513	Threaded Barrel, 5mm OD x M4	1
15	100558	M6 Nyl Ins Domed Cap L/N Zc	1
16	003284	Binding Post, 8mm x 40mm x M6	1
17	102803	Washer Flat .250 X .500 X .027 Hx Blz	2
18	100746	M6 Flat Washer Blk Zn	1
19	114443	Tube Spacer, Black, 1" OD x .083" x .80 LG	2

Item Number	Part Number	Description	Quantity
		<i>Replacement for part number 001230</i>	
20	000605	Depth Adjustable Frame Extension Tube, Catalyst/Spark	1
21	101811	M6 x 35 BHCS Blk Zn	1
22	000612	1" Half Saddle Washer	4
23	101861	Nylon Washer 5/16 x 1/2 x .03	1
25	100804	Tube End Plug 1"	1