



1100

Available in
Black or White

Rehab Shower/Commode Chair- Seat Height/Slope Adjustable Seat

- Packages Now Available
- Stainless Steel Frame
- Several New Seat Options Available
- Seat Height and Slope Adjustment
- Three Frame Sizes:
18"Wx18"D, 20"Wx18"D, 22"Wx18"D

The 1100, Rehab Shower/Commode Chair with Seat Height/Slope Adjustable Seat, (when ordered with 24" rear wheels, no slope adjustment with 4 caster configuration) has modular components to help alleviate the need for custom design and its consequent added costs and delivery time.

This chair is easily adaptable for multi-use in facilities and group homes. The seat height can go low enough for foot propulsion. A lower seat height can benefit safer transfers.



FRAMES



P13721
18"Wx18"D
Stainless Steel
Frame



P13722
20"Wx18"D
Stainless Steel
Frame



P13723
22"Wx18"D
Stainless Steel
Frame

WHEELS/REAR CASTERS



60800-2
5" Dual Locking
Casters
(pair)



P61096
24" Wheels
(pair)



P60549
24" Pneumatic
Street Tread
Wheels
(pair)



P61059
24" Flat Free Street
Tread Wheels
(pair)



P61103
24" PVC Handrims
(replaces standard
handrims, pair)

AXLES



P13708
Bolted Axles with
Tipping Levers
(pair)



P13707
Quick Release
Axles with Tipping
Levers
(pair)



P60532
Wheel Locks
(pair)



P13724
Wheel Locks with
Extended Handle
(pair)



60841-2
5" Casters
(pair)



60800-2
5" Dual Locking
Casters
(pair)

WHEEL LOCKS

FRONT CASTERS

SEATS

*Seat works in all 4 positions



P60993*
18"Wx18"D
Comfortuff 1.5" waterfall
foam
Front/Rear Open Seat
A-5"xB-8" opening



P60974
18"Wx18"D
Comfortuff sloped foam
Front Open Seat
A-4"xB-6.5" opening



P60850*
18"Wx18"D
Ensolute® 1" waterfall foam
Front/Rear Open Seat
A5"xB-8" opening



P60913*
18"Wx18"D
Ensolute® 2" waterfall foam
Front/Rear Open Seat
A5.25"xB-8" opening



P61086
18"Wx18"D
Ensolute® 2" foam
Solid Seat



P61058
18"Wx18"D
Ensolute® 2" waterfall foam
Front Open Contoured Seat
A-5.5"xB-8.25" opening



P61038
20"Wx18"D
Comfortuff
1.5" waterfall foam
Front Open Seat
A-5"xB-8" opening

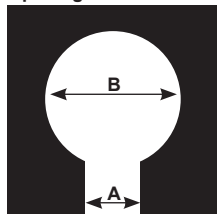


P60903
20"Wx18"D
Ensolute® 1" foam
Front/Rear Open Seat
A-4.5"xB-7.75" opening



P60905
22"Wx18"D
Ensolute® 1" foam
Front/Rear Open Seat
A-4.5"xB-7.75" opening

Front/Rear Open Seat
Opening Measurements



ARMRESTS



P13715
Left Hand Armrest
with Pad



P13716
Right Hand Armrest
with Pad



P13717
Left Hand with
Arm Trough



P13718
Right Hand with
Arm Trough



P13615
Left Hand
Height-Adjustable
Armrest



P13616
Right Hand
Height-Adjustable
Armrest

LEG RESTS



PL13725
Left Leg Rest



PR13725
Right Leg Rest



P13571
Left Elevating
Leg Rest



P13572
Right Elevating
Leg Rest



PL11099
Left Foot Plate



PR11099
Right Foot Plate



PL11100
Left Foot Plate with
Heel Loop

FOOT PLATES

FOOT PLATES



PR11100
Right Foot Plate
with Heel Loop



P61137
Left Oversized
Aluminum
Foot Plate



P61138
Right Oversized
Aluminum
Foot Plate



PL11101
Left Padded
Foot Plate



PR11101
Right Padded
Foot Plate



P13690
18"W Sling Back
with Stroller
Handles



P13692
18"W Sling Back
with Stroller
Handles
(adjustable depth)

BACKS

BELTS



P13691
18"W Solid Back



P13693
18"W Solid Back
(adjustable depth)



P13710
20"W Sling Back
with Stroller
Handles



P13713
20"W Solid Back



P13712
22"W Sling Back
with Stroller
Handles



P13714
22"W Solid Back



PW60909
Waist Belt
(for 18"W frame only, 48"
circumference with 12"
velcro overlap)



PT60909
Trunk Belt
(for 18"W frame only, 48"
circumference with 12"
velcro overlap)



PW60884
Waist Belt
(for 20"W and 22"W frame
only, 48" circumference
with 12" velcro overlap)



PT60884
Trunk Belt
(for 20"W and 22"W frame
only, 48" circumference
with 12" velcro overlap)



P60879
Calf Strap



P11093
Bodypoint®
Trunk Belt



P11102
Bodypoint®
Trunk Belt (pair)

POSITIONING AIDS



P11103
Bodypoint® Trunk
Belt & Waist Belt



P11112
Bodypoint® XL
Trunk Belt



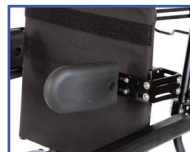
P11113
Belt w/Quick
Release Knobs



P61081
Bodypoint®
Calf Strap



P11114
Bodypoint®
Knee Belt



PL13574
Left Hand
Swing-Away
Adjustable Lateral



PR13574
Right Hand
Swing-Away
Adjustable Lateral

PANS



P61006
Abductor/Deflector
Large



P13376
18"Wx18"D
Pan/Hanger



P13719
20"Wx18"D
Pan/Hanger



P13720
22"Wx18"D
Pan/Hanger



1100 with Options

SPECIFICATIONS

Weight Capacity		350 lbs.	
Seat Width		18" , 20" , 22"	
Seat Depth		18"	
Seat Height From Floor		21"-24"	
Leg Rest Range		16"-20	
Arm Height from Top of Seat		8"	
Width Between Arm Rests		20.5"	
Back Height From Top of Seat		19"	
Seat Range			
Under Seat Height Clearance	<u>Flat</u>	<u>1" Slope</u>	<u>2" Slope</u>
Lowered-	15"	14"	13"
Raised-	18"	17"	16"
Under Seat Height Clearance win Pan		13.5"-16.5"	
Overall Width		25.5"	
Overall Length		35.5"	