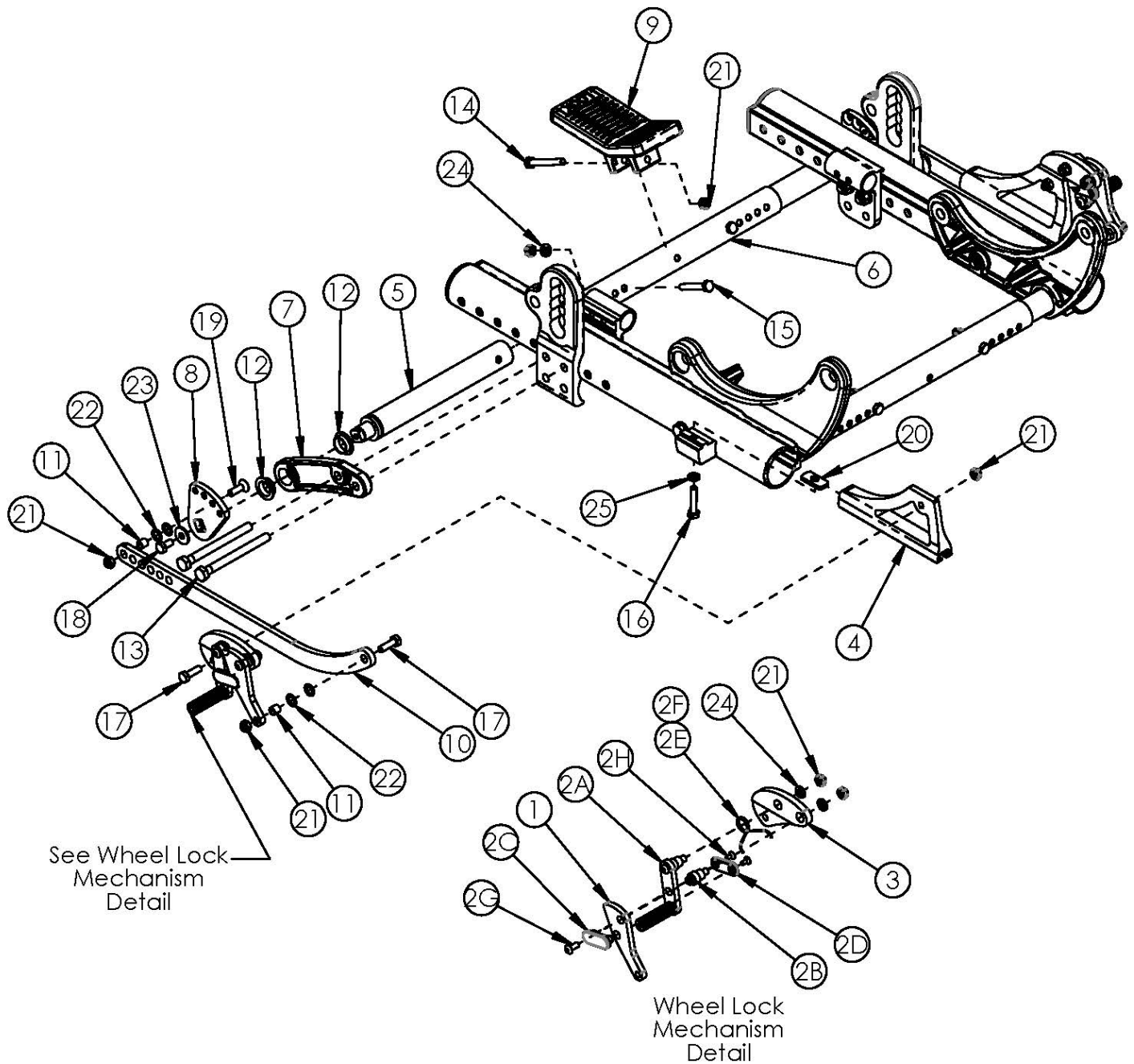


Focus CR Attendant Foot Lock



Growth Struts based on Frame Width Range

Item Number	Part Number	Description	Quantity	Retail
1-5, 6a, 7-9, 10a, 11-25	506829	Foot Lock Retrofit Kit, 12-16" Wheel, Small, Focus <i>Use this kit if retrofitting to an Attendant Foot Lock</i>	1	\$682.27
1-5, 6b, 7-9, 10a, 11-25	506830	Foot Lock Retrofit Kit, 12-16" Wheel, Medium, Focus <i>Use this kit if retrofitting to an Attendant Foot Lock</i>	1	\$682.27

Item Number	Part Number	Description	Quantity	Retail
1-5, 6c, 7-9, 10a, 11-25	506831	Foot Lock Retrofit Kit, 12-16" Wheel, Large, Focus <i>Use this kit if retrofitting to an Attendant Foot Lock</i>	1	\$682.27
1-5, 6d, 7-9, 10a, 11-25	114285	Foot Lock Retrofit Kit, 12-16" Wheel, X-Large, Focus <i>Use this kit if retrofitting to an Attendant Foot Lock</i>	1	\$670.98
1-5, 6a, 7-9, 10b, 11-25	506832	Foot Lock Retrofit Kit, 20-24" Wheel, Small, Focus <i>Use this kit if retrofitting to an Attendant Foot Lock</i>	1	\$682.27
1-5, 6b, 7-9, 10b, 11-25	506833	Foot Lock Retrofit Kit, 20-24" Wheel, Medium, Focus <i>Use this kit if retrofitting to an Attendant Foot Lock</i>	1	\$682.27
1-5, 6c, 7-9, 10b, 11-25	506834	Foot Lock Retrofit Kit, 20-24" Wheel, Large, Focus <i>Use this kit if retrofitting to an Attendant Foot Lock</i>	1	\$682.27
1-5, 6d, 7-9, 10b, 11-25	114286	Foot Lock Retrofit Kit, 20-24" Wheel, X-Large, Focus <i>Use this kit if retrofitting to an Attendant Foot Lock</i>	1	\$670.98
1-5, 7-9, 10a, 11-14, 16-25	501432	Foot Lock Kit, 12-16" Wheel	1	\$677.96
1-5, 7-9, 10b, 11-14, 16-25	501433	Foot Lock Kit, 20-24" Wheel	1	\$677.96
6a, 15, 21, 24	501123	Base/Axle/Foot Lock Strut Assembly Small Focus	1	\$24.78
6b, 15, 21, 24	501124	Base/Axle/Foot Lock Strut Assembly Medium Focus	1	\$24.78
6c, 15, 21, 24	501125	Base/Axle/Foot Lock Strut Assembly Large Focus	1	\$24.78
6d, 15, 21, 24	114284	Base/Axle/Foot Lock Strut Assembly X-Large Focus	1	\$26.87
1a, 2a-2h	001142	Wheel Lock Foot Right Tilt	1	\$83.53
1b, 2a-2h	001143	Wheel Lock Foot Left Tilt	1	\$83.53
1a, 1b, 2a - 2h	502178	Foot Wheel Lock Lever and Wheel Lock Linkage Kit PAIR	1	\$167.05
7, 12	501435	Foot Lock Tube Mount with Bearings Focus	1	\$24.92
3	003771	Foot Wheel Lock Mount Tilt <i>Replaced 001296</i>	2	\$29.77
4a	001138	Plate Wheel Lock Right Tilt	1	\$16.32
4b	001139	Plate Wheel Lock Left Tilt	1	\$16.32
5	001145	Strut Foot Lock Tilt	2	\$75.33
6a	001011	Growth Strut, Base, Small Tilt	1	\$18.91
6b	001012	Growth Strut, Base, Medium Tilt	1	\$18.91
6c	001013	Growth Strut, Base, Large Tilt	1	\$18.91
6d	112005	Growth Strut, Base, X-Large Tilt	1	\$21.00

Item Number	Part Number	Description	Quantity	Retail
7	001427	Tube Mount Foot Lock Tilt	2	\$17.87
8	001150	Index Plate Foot Lock Tilt	2	\$33.05
9	001397	Pedal Foot Lock 2-Way Tilt	1	\$10.93
10a	001428	Linkage Foot Lock Short TILT <i>Used with 12" - 16" rear wheels</i>	2	\$26.81
10b	001407	Linkage Foot Lock Long TILT <i>Used with 20" - 24" rear wheels</i>	2	\$24.06
11	001156	Pivot Bushing Tilt	4	\$5.62
12	001157	IGUS Bushing GFM-1618-06	4	\$15.76
13a	103513	M8 x 120 HHCS Blk Zn <i>Use quantity 1 of 103513 and quantity 1 of 101832 per side when Foot Tilt is present</i>	2	\$4.20
13b	101832	M8 x 90 HHCS Blk Zn <i>Use quantity 2 per side when Hand Tilt is present</i>	4	\$3.68
14	101826	M6 x 50 HHCS Blk Zn	1	\$2.10
15	101825	M6 x 40 HHCS Blk Zn	2	\$1.05
16	101824	M6 x 30 HHCS Blk Zn	2	\$2.10
17	101823	M6 x 20 HHCS Blk Zn	4	\$1.05
18	101822	M6 x 12 HHCS BLKZC w/Patch	2	\$1.05
19	100866	M6 x 20 CLS12.9 DIN7991 FSHCS Blk Zc w/Patch	2	\$2.63
20	001141	Weld Nut NDM 06028 Zinc	2	\$2.63
21	100658	M6 Nylock Nut Blk Zn	13	\$1.05
22	101861	Nylon Washer 5/16 x 1/2 x .03	8	\$0.53
23	101853	M6 Washer Blk Zn	2	\$0.53
24	100746	M6 Flat Washer Blk Zn	6	\$1.58
25	101835	M6 Lock Washer Blk Zn	2	\$0.53

Inverted axle plates are not used with wheels 20" or larger.

Wheel	Tire	Caster	Standard Axle Plate Seat Heights	Inverted Axle Plate Seat Heights
12" Mag	Pneumatic	5"	13.5" - 14.5"	17.5" - 19.5"
12" Mag	Pneumatic	6"	14.5"	17.5" - 19.5"
12" Mag	Pneumatic	6x2"	14.5"	17.5" - 19.5"
12" Mag	Pneumatic	7"	n/a	17.5" - 19.5"
12" Mag	Pneumatic	8"	n/a	17" - 19.5"
12" Mag	Pneumatic	8"x1.5"	n/a	17.5" - 19.5"
12" Mag	Pneumatic	8x2"	n/a	17.5" - 19.5"
12" Mag	Full Poly	5"	n/a	16.5" - 19"
12" Mag	Full Poly	6"	n/a	16.5" - 19"
12" Mag	Full Poly	6x2"	n/a	16.5" - 19"
12" Mag	Full Poly	7"	n/a	16.5" - 19"
12" Mag	Full Poly	8"	n/a	16." - 18.5"
12" Mag	Full Poly	8"x1.5"	n/a	16.5" - 19"
12" Mag	Full Poly	8x2"	n/a	17" - 18.5"
12" Mag w/ Drum Brake	Pneumatic	5"	13" - 14.5"	17.5" - 20"
12" Mag w/ Drum Brake	Pneumatic	6"	14" - 14.5"	17.5" - 19.5"
12" Mag w/ Drum Brake	Pneumatic	6x2"	14" - 14.5"	17.5" - 20"
12" Mag w/ Drum Brake	Pneumatic	7"	n/a	17.5" - 20"
12" Mag w/ Drum Brake	Pneumatic	8"	n/a	17.5" - 20"
12" Mag w/ Drum Brake	Pneumatic	8"x1.5"	n/a	17.5" - 19.5"
12" Mag w/ Drum Brake	Pneumatic	8x2"	n/a	17.5" - 19.5"
12" Mag w/ Drum Brake	Full Poly	5"	13" - 14.5"	17.5" - 19.5"
12" Mag w/ Drum Brake	Full Poly	6"	14" - 14.5"	17.5" - 19.5"
12" Mag w/ Drum Brake	Full Poly	6x2"	14" - 14.5"	17.5" - 19.5"
12" Mag w/ Drum Brake	Full Poly	7"	n/a	17.5" - 19.5"
12" Mag w/ Drum Brake	Full Poly	8"	n/a	17.5" - 19.5"
12" Mag w/ Drum Brake	Full Poly	8"x1.5"	n/a	17.5" - 19.5"
12" Mag w/ Drum Brake	Full Poly	8x2"	n/a	17.5" - 19.5"

Inverted axle plates are not used with wheels 20" or larger.

Wheel	Tire	Caster	Standard Axle Plate Seat Heights	Inverted Axle Plate Seat Heights
16" Mag	Pneumatic	5"	13" - 16"	19" - 20.5"
16" Mag	Pneumatic	6"	14" - 16"	19" - 20.5"
16" Mag	Pneumatic	6x2"	14" - 16"	19" - 20.5"
16" Mag	Pneumatic	7"	15" - 16"	19" - 20.5"
16" Mag	Pneumatic	8"	16"	19" - 20.5"
16" Mag	Pneumatic	8"x1.5"	15.5" - 16"	19" - 20.5"
16" Mag	Pneumatic	8x2"	16"	19" - 20.5"
16" Mag	Full Poly	5"	13" - 16.5"	19" - 20.5"
16" Mag	Full Poly	6"	14" - 16.5"	19" - 20.5"
16" Mag	Full Poly	6x2"	14" - 16.5"	19" - 20.5"
16" Mag	Full Poly	7"	15" - 16.5"	19.5" - 20.5"
16" Mag	Full Poly	8"	16"	19" - 20.5"
16" Mag	Full Poly	8"x1.5"	15.5" - 16.5"	19" - 20.5"
16" Mag	Full Poly	8x2"	16" - 16.5"	19" - 20.5"
16" Mag	Low Poly	5"	13" - 15"	18" - 20"
16" Mag	Low Poly	6"	14" - 15"	18" - 20"
16" Mag	Low Poly	6x2"	14" - 15"	18" - 20.5"
16" Mag	Low Poly	7"	n/a	18" - 20.5"
16" Mag	Low Poly	8"	n/a	18" - 20.5"
16" Mag	Low Poly	8"x1.5"	n/a	18" - 20"
16" Mag	Low Poly	8x2"	n/a	18" - 20"
16" Mag w/ Drum Brake	All	5"	13.5" - 16"	19" - 20.5"
16" Mag w/ Drum Brake	All	6"	14" - 16"	18.5" - 20.5"
16" Mag w/ Drum Brake	All	6x2"	14" - 16"	18.5" - 20.5"
16" Mag w/ Drum Brake	All	7"	15" - 15.5"	18.5" - 20.5"
16" Mag w/ Drum Brake	All	8"	n/a	18.5" - 20.5"
16" Mag w/ Drum Brake	All	8"x1.5"	15.5" - 16"	18.5" - 20.5"
16" Mag w/ Drum Brake	All	8x2"	16"	18.5" - 20.5"