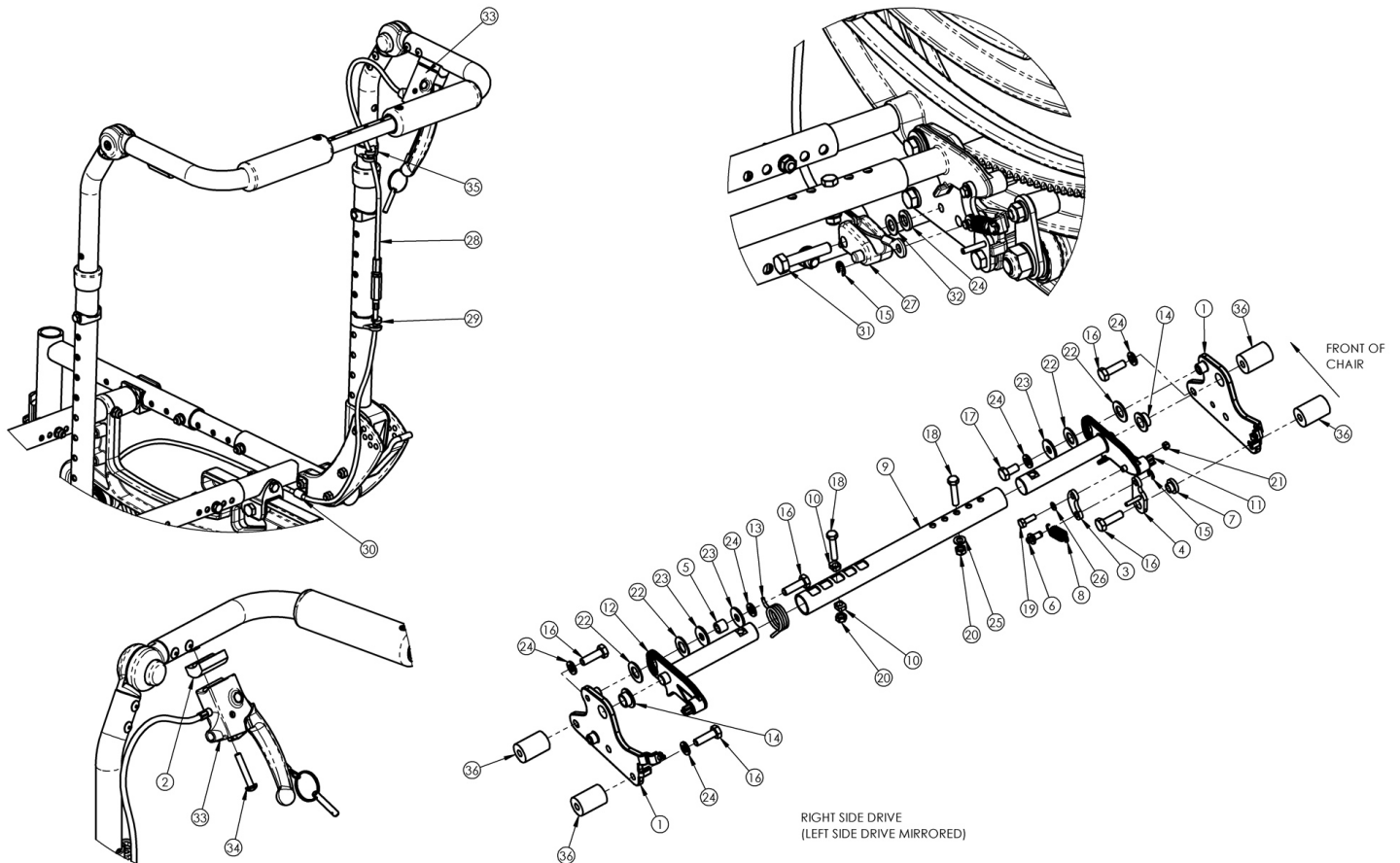


(Discontinued 3) Focus CR Hand Tilt Mechanism Height Adjustable Back



This Focus CR Hand Tilt is discontinued and was used on chairs starting with serial numbers FCR0016745 and FCHD002213 prior to a March 5th, 2018 invoice date.

Item Number	Part Number	Description	Quantity
1a, 14	501162	Tilt Lock Mount Bracket w/ Bearing Kit, Right, Focus, Height Adjustable	1
1b, 14	501163	Tilt Lock Mount Bracket w/ Bearing Kit, Left, Focus, Height Adjustable	1
2	003367	Spacer, Tilt Lever	1
4a	002084	Toggle, Drive, Tilt, R	1
4b	002085	Toggle, Drive, Tilt, L	1
5	002086	Spacer, .38ODx.24IDx.31LG	1
6	003364	Pin, Toggle, Tilt	1
9a	002094	Growth Strut, Tilt Lock, Small	1

Item Number	Part Number	Description	Quantity
9b	002095	Growth Strut, Tilt Lock, Med	1
9c	002096	Growth Strut, Tilt Lock, Large	1
10	002097	Insert, Drive, Tilt	2
13a	001109	Spring Tilt Lock Right TILT <i>Used with left side assembly</i>	1
13b	001110	Spring Tilt Lock Left TILT <i>Used with right side assembly</i>	1
16a	101823	M6 x 20 HHCS Blk Zn <i>Standard weight capacity requires qty 5; Heavy Duty requires qty of 1</i>	5
16b	100674	M6 x 45 CLS10.9 DIN931 HHCS ZC <i>Used with Heavy Duty option/spacer</i>	3
16c	101826	M6 x 50 HHCS Blk Zn <i>Used on drive side tilt with Heavy Duty option/spacer</i>	1
17	101822	M6 x 12 HHCS BLKZC w/Patch	1
18	101821	M5 x 25 HHCS Blk Zn	2
19	102783	M3 x 12 HHCS, CL8.8, Blk Zn	1
20	100657	M5 Nylock Nut Blk Zn	2
21	102784	Nut, Nylock, M3, Blk	2
22	102082	Washer Nylon .406IDX.75ODX.040	4
23	101853	M6 Washer Blk Zn	3
24	101835	M6 Lock Washer Blk Zn	5
25	101856	Flat Washer, M5, Blk Zn	1
26	102785	Flat Washer, M3, Blk Zn	1
27	003387	Cable Mount, Tilt	1
28a	002102	Cable, Tilt, Long <i>Used with short backcanes. Also used with tall backcanes with back heights of 20" - 22"</i>	1
28b	002103	Cable, Tilt, XL <i>Used with tall backcanes with back heights of 23" - 27"</i>	1
29	001117	Cable Clip 1"	1
30	001239	P-Clip 3/16"	1

Item Number	Part Number	Description	Quantity
31	101824	M6 x 30 HHCS Blk Zn	1
32	102803	Washer Flat .250 x .500 x .027 HX BLZ	1
33	002801	Lever Assembly Horizontal Tilt	1
34	100696	M5 x 30mm PPH Capscrew	1
35	001118	Cable Clip 7/8"	1
36	001405	Spacer, .69OD x .24ID x .1.01Lg <i>Only used with Heavy Duty Option</i>	4