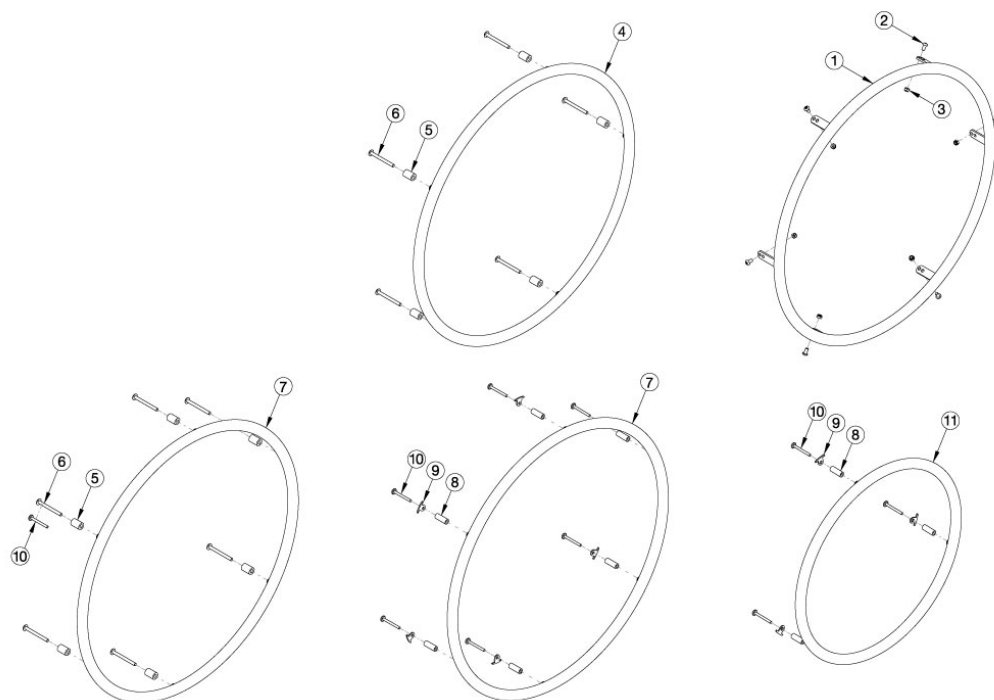


# Little Wave Aluminum Anodized Handrim



For more information see Handrim Hardware Chart. If replacing handrims use Aluminum Anodized Handrim Reference to match style. Quantity in Handrim Hardware Kits are for one wheel. Tab mounted handrims must be installed prior to the tire being installed.

Item Number	Part Number	Description	Quantity
8a, 9a, 10a	505263	Handrim Hardware Kit, 3 Rivet Nut, EACH <i>Used with 18" Ki Spoke and 18" MAXX Spoke wheels with standard handrim mount option</i>	1
8b, 9a, 10a	116742	Handrim Hardware Kit, Close Mount, 3 Rivet Nut, EACH <i>Used with 18" Ki Spoke and 18" MAXX Spoke wheels with close mount handrim mount option</i>	1
8a, 9a, 10a	502168	Handrim Hardware Kit, 6 Rivet Nut, EACH <i>Used with Ki Spoke and MAXX Spoke with standard handrim mount option. Used with Spoke wheel with standard handrim mount option when Pneumatic w/ Airless Insert tires ARE present.</i>	1
8b, 9a, 10b	113069	Handrim Hardware Kit, Close Mount, 6 Rivet Nut, EACH <i>Used with Ki Spoke and MAXX Spoke with close handrim mount option. Used with Spoke wheel with close handrim mount option when Pneumatic w/ Airless Insert tires ARE present.</i>	1
8a, 9b, 10a	118971	Handrim Hardware Kit, 5 Rivet Nut, Spoke Wheel, EACH <i>Used with Spoke wheel with standard handrim mount option when Pneumatic w/ Airless Insert tires are NOT present</i>	1
5a, 6c	117377	Handrim Hardware Kit, Standard Mount, MAXX Mag, EACH	1

Item Number	Part Number	Description	Quantity
		<i>Used with MAXX Mag wheels with standard handrim mount option</i>	
5b, 10a	117378	Handrim Hardware Kit, Close Mount, MAXX Mag, EACH <i>Used with MAXX Mag wheels with close mount handrim mount option</i>	1
5a, 6a	502171	Handrim Hardware Kit, 5 Rivet Nut, EACH <i>Used with X Core Mag wheels with standard handrim mount option</i>	1
5b, 6b	113070	Handrim Hardware Kit, Close Mount, 5 Rivet Nut, EACH <i>Used with X Core Mag wheels with close mount handrim mount option</i>	1
2a, 3	502174	Handrim Hardware Kit, 6 Tab, EACH <i>Used with Spinergy, Topolino, and Superlight Spoke wheels</i>	1
1a	100754	Handrim Aluminum Anodized 6 Tab 24" <i>Used with 24" Superlight Spoke and Topolino wheels</i>	1
1a	502236	Handrim Aluminum Anodized 6 Tab 24" w/ Micro Grip <i>Used with 24" Superlight Spoke and Topolino wheels</i>	1
1c	103125	Handrim Aluminum Anodized Spinergy 6 Tab 20" <i>Used with 20" Spinergy Spox wheels</i>	1
1d	505584	Handrim Aluminum Anodized Spinergy 6 Tab 20" w/ Micro Grip <i>Used with 20" Spinergy Spox wheels</i>	1
1e	100827	Handrim Aluminum Anodized Spinergy 6 Tab 22" <i>Used with 22" Spinergy wheels</i>	1
1f	502238	Handrim Aluminum Anodized Spinergy 6 Tab 22" w/ Micro Grip <i>Used with 22" Spinergy wheels</i>	1
1g	100766	Handrim Aluminum Anodized Spinergy 6 Tab 24" <i>Used with 24" Spinergy wheels</i>	1
1h	502239	Handrim Aluminum Anodized Spinergy 6 Tab 24" w/ Micro Grip <i>Used with 24" Spinergy wheels</i>	1
2a	100669	M5 x 10 BTN SHCS BLKZC w/Patch <i>Used with Spinergy and Topolino wheels</i>	6
2b	100536	M5 x 12 BTN SHCS ZC <i>Used with Superlight Spoke</i>	6
3	100657	M5 Nylock Nut Blk Zn <i>Used with Spinergy, Topolino, and Superlight Spoke wheels</i>	6
4a	101897	Handrim Aluminum Anodized 5 Rivet Nut 20" <i>Used with 20" 5-Spoke X Core Mag wheels</i>	1

Item Number	Part Number	Description	Quantity
5a	100629	Handrim Spacer Alum Ano Riv <i>Used with X Core Mag (Qty 5 needed) and MAXX Mag (Qty 6 needed) with standard handrim mount option</i>	1
6a	100724	M5 x 55 PH TRS HD M/S ZC <i>Used with X Core Mag with standard handrim mount option</i>	5
6c	122064	PHMS, M5x0.8x50, CLS4.8, PHL, BLZ, NYL, DIN7985, Custom <i>Used with MAXX Mag with standard handrim mount option</i>	6
7a	100206	Handrim Aluminum Anodized 3 Rivet Nut 18" <i>Used with 18" Ki Spoke and 18" MAXX Spoke wheels</i>	1
7a	502245	Handrim Aluminum Anodized 3 Rivet Nut 18" w/ Micro Grip <i>Used with 18" Ki Spoke and 18" MAXX Spoke wheels</i>	1
7b	200536	Handrim Aluminum Anodized 6 Rivet Nut 20" <i>Used with 20" Ki Spoke, 20" MAXX Spoke, and 20" MAXX Mag wheels</i>	1
7b	502246	Handrim Aluminum Anodized 6 Rivet Nut 20" w/ Micro Grip <i>Used with 20" Ki Spoke, 20" MAXX Spoke, and 20" MAXX Mag wheels</i>	1
7c	100560	Handrim Aluminum Anodized 6 Rivet Nut 22" <i>Used with 22" Ki Spoke, 22" MAXX Spoke, 22" Spoke, and 22" MAXX Mag wheels</i>	1
7c	502247	Handrim Aluminum Anodized 6 Rivet Nut 22" w/ Micro Grip <i>Used with 22" Ki Spoke, 22" MAXX Spoke, 22" Spoke, and 22" MAXX Mag wheels</i>	1
7d	200349	Handrim Hard Anodized 6 Rivet Nut 24" <i>Used with 24" Maxx Spoke wheels starting on chairs invoiced after 3/21/25</i>	1
7d	502248	Handrim Aluminum Hard Anodized 6 Rivet Nut 24" w/ Micro Grip <i>Used with 24" Maxx Spoke wheels starting on chairs invoiced after 3/21/25</i>	1
7d	105137	Handrim Aluminum Anodized 6 Rivet Nut 24" <i>Used with 24" Ki Spoke, 24" MAXX Mag, and 24" Spoke wheels starting on chairs invoiced after 3/21/25</i>	1
7d	117104	Handrim Aluminum Anodized 6 Rivet Nut 24" w/ Micro Grip <i>Used with 24" Ki Spoke, 24" MAXX Mag, and 24" Spoke wheels starting on chairs invoiced after 3/21/25</i>	1
8a	100653	Handrim Spacer Spoke <i>Used with Ki Spoke and MAXX Spoke with standard handrim mount option</i>	6
9a	100698	Handrim Tab <i>Used with Ki Spoke and MAXX Spoke wheels. Used with Spoke wheel when Pneumatic w/ Airless Insert tires ARE present. Tabs are included / installed with MAXX Spoke wheels and Spoke wheel and tire assemblies.</i>	6

Item Number	Part Number	Description	Quantity
9b	116732	Wheel Tabs, Long, 5 Rivet Nut <i>Used with Spoke wheel when Pneumatic w/ Airless Insert tires are NOT present</i>	5
10a	122063	PHMS, M5x0.8x40, CLS4.8, PHL, BLZ, NYL, DIN7985, Custom <i>Used with Ki Spoke and MAXX Spoke with standard handrim mount option</i>	6
11a	100206	Handrim Aluminum Anodized 3 Rivet Nut 18" <i>Used with 18" Ki Spoke and 18" MAXX Spoke wheels</i>	1
11b	502245	Handrim Aluminum Anodized 3 Rivet Nut 18" w/ Micro Grip <i>Used with 18" Ki Spoke and 18" MAXX Spoke wheels</i>	1

Handrim Hardware Chart															
Wheel		Handrim Connection				Handrim									
Wheel	Wheel Part No.	Connection Points	Rivet/Tab	Spacer*	Screw*	Aluminum Anodized	Superlight	Plastic Coated	Projection	Ergonomic Standard	Ergonomic LT	Natural Fit Standard	Natural Fit LT	Flex Rim	
22" Spoke	116730	5 or 6	116732 (Used with 5 Rivet)  100698 (Used with 6 Rivet)	100653 (Not used w/ Superlight Handrim)	Aluminum, Plastic Ctd, Projection Ergonomic: 122063	101898 (5 Rivet)		101964 (5 Rivet)	112824 (6 Rivet)	113082 (6 Rivet)	113085 (6 Rivet)	200538 (6 Rivet)	200201 (6 Rivet)		
24" Spoke	116728	5 or 6	Not used w/ Superlight Handrims		Natural Fit: 100835  Superlight: 100669  Nut: 100657	100975 (5 Rivet)	101161 (6 Tab)	100976 (5 Rivet)	112825 (6 Rivet)	113083 (6 Rivet)	113086 (6 Rivet)	100793 (6 Rivet)	200202 (6 Rivet)		
18" MAXX Spoke	109285	3	100698 (Not used w/ Superlight Handrim)	100653 (Not used w/ Superlight Handrim)	Aluminum, Plastic Ctd, Projection, Ergonomic: 122063	100206									
20" MAXX Spoke	108244	6			Natural Fit: 100835	200536		112819							
22" MAXX Spoke	105135				Superlight: 100669	100560		112820	112824	113082	113085	200538	200201		
24" MAXX Spoke	105136				Nut: 100657	200349	101161	112821	112825	113083	113086	100793	200202		
25" MAXX Spoke	107436				200350		112822	200548	113084	113087	200539	200540			
26" MAXX Spoke	107437				200351		112823	200549			100907	101454			
20" MAXX Mag	111853	6		Aluminum, Plastic Coated, Projection: 100629	Aluminum, Plastic Coated, Projection, Ergonomic: 122064	200536		112819							
22" MAXX Mag	111854			Natural Fit & Ergonomic: 101756	Natural Fit: 101893	100560		112820	112824	113082	113085	200538	200201		
24" MAXX Mag	111855					105137		112821	112825	113083	113086	100793	200202		
24" Superlight	101159	6			100536	100754	101161	100836		113080	113081	100830	100828		
25" Superlight	101160						101160	101091					101464	101460	

\* Spacer and and screw part numbers listed in the chart are for standard handrim mounting. If using close mount handrim mounting on aluminum anodized, plastic coated or projection handrims, use part number 100792 for the spacer, part number 122065 for the screw on Ki Spoke and MAXX Spoke wheels, part number 100666 for the screw on 5-Spoke X Core wheels, or part number 122063 for the screw on MAXX Mag wheels.

Effective 4/19/2024

Handrim Hardware Chart (Continued)														
Wheel		Handrim Connection				Handrim								
Wheel	Wheel Part No.	Connection Points	Rivet/Tab	Spacer*	Screw*	Aluminum Anodized	Superlight	Plastic Coated	Projection	Ergonomic Standard	Ergonomic LT	Natural Fit Standard	Natural Fit LT	Flex Rim
20" Spinerger Spox	See Spinerger Spox Page	6			Ergonomic: 100536	103125		103179						
22" Spinerger Spox					All Others: 100669	100827		100808				100889	100888	
24" Spinerger Spox						100766	101161	100615				100830	100828	
25" Spinerger Spox					Nut: 100657	100767	101160	100765				101464	101460	
26" Spinerger Spox						101477		101148				200200	100950	
22" Spinerger LX	See Spinerger LX Page	6			Ergonomic: 100536	100827		100808				100889	100888	
24" Spinerger LX					All Others: 100669	100766	101161	100615		113080	113081	100830	100828	See Spinerger LX Page
25" Spinerger LX						100767	101160	100765				101464	101460	
26" Spinerger LX					Nut: 100657	101477		101148				200200	100950	

Handrim Hardware Chart (Discontinued Wheels)												
Wheel		Handrim Connection				Handrim						
Wheel	Wheel Part No.	Connection Points	Rivet/Tab	Spacer*	Screw*	Aluminum Anodized	Superlight	Plastic Coated	Projection	Natural Fit Standard	Natural Fit LT	Flex Rim
18" Ki Spoke	200529	3	100698	100653	Aluminum, Plastic Ctd, Projection: 122063	100206		101106				
20" Ki Spoke	200530	6				200536		200542				
22" Ki Spoke	200531					100560		100576	100569	200538	200201	
24" Ki Spoke	200532					200349		100577	200547	100793	200202	
25" Ki Spoke	200533				Natural Fit: 100835	200350		101870	200548	200539	200540	
26" Ki Spoke	200534					200351		100578	200549	100907	101454	
20" 5-Spoke X Core	101961	5		Aluminum, Projection, Natural Fit: 100629	100724	101897		101963				
22" 5-Spoke X Core	101962					101898		101964				
24" 5-Spoke X Core	100960					100975		100976	200546			
24" 5-Spoke X Core	100960				Plastic Ctd: 101756	101893					100768	100769

\* Spacer and screw part numbers listed in the chart are for standard handrim mounting. If using close mount handrim mounting on aluminum anodized, plastic coated or projection handrims, use part number 100792 for the spacer, part number 122065 for the screw on Ki Spoke and MAXX Spoke wheels, part number 100666 for the screw on 5-Spoke X Core wheels, or part number 122063 for the screw on MAXX Mag wheels.

Effective 4/19/2024

Part #	Description	Used on prior to 3/21/2025	Used on after 3/21/25
200349	Handrim Hard Anodized 6 Rivet Nut 24"	CAT 5, CAT5TI, SPARK, ROGUE XP, ROGUE XPE, ROGUE10, ROGUE2, CLIK XP, CLIK XPE, FLIP XP, FLIP XPE, ETHOS	24" Maxx Spoke
502248	Handrim Aluminum Hard Anodized 6 Rivet Nut 24" w/ Micro Grip	CAT 5, CAT5TI, SPARK, ROGUE XP, ROGUE XPE, ROGUE10, ROGUE2, CLIK XP, CLIK XPE, FLIP XP, FLIP XPE, ETHOS	24" Maxx Spoke
105137	Handrim Aluminum Anodized 6 Rivet Nut 24"	CAT4, CAT4C, CAT5VX, CATE, FOCUS CR, FOCUS CRE, CR45, LIBERTY, LIBERTY BASIC, TSUNAMI AL, TSUNAMI AL HD, TSUNAMI ALX, ROGUE ALX,	24" Maxx Mag and 24" Spoke
117104	Handrim Aluminum Anodized 6 Rivet Nut 24" w/ Micro Grip	CAT4, CAT4C, CAT5VX, CATE, FOCUS CR, FOCUS CRE, CR45, LIBERTY, LIBERTY BASIC, TSUNAMI AL, TSUNAMI AL HD, TSUNAMI ALX, ROGUE ALX,	24" Maxx Mag and 24" Spoke