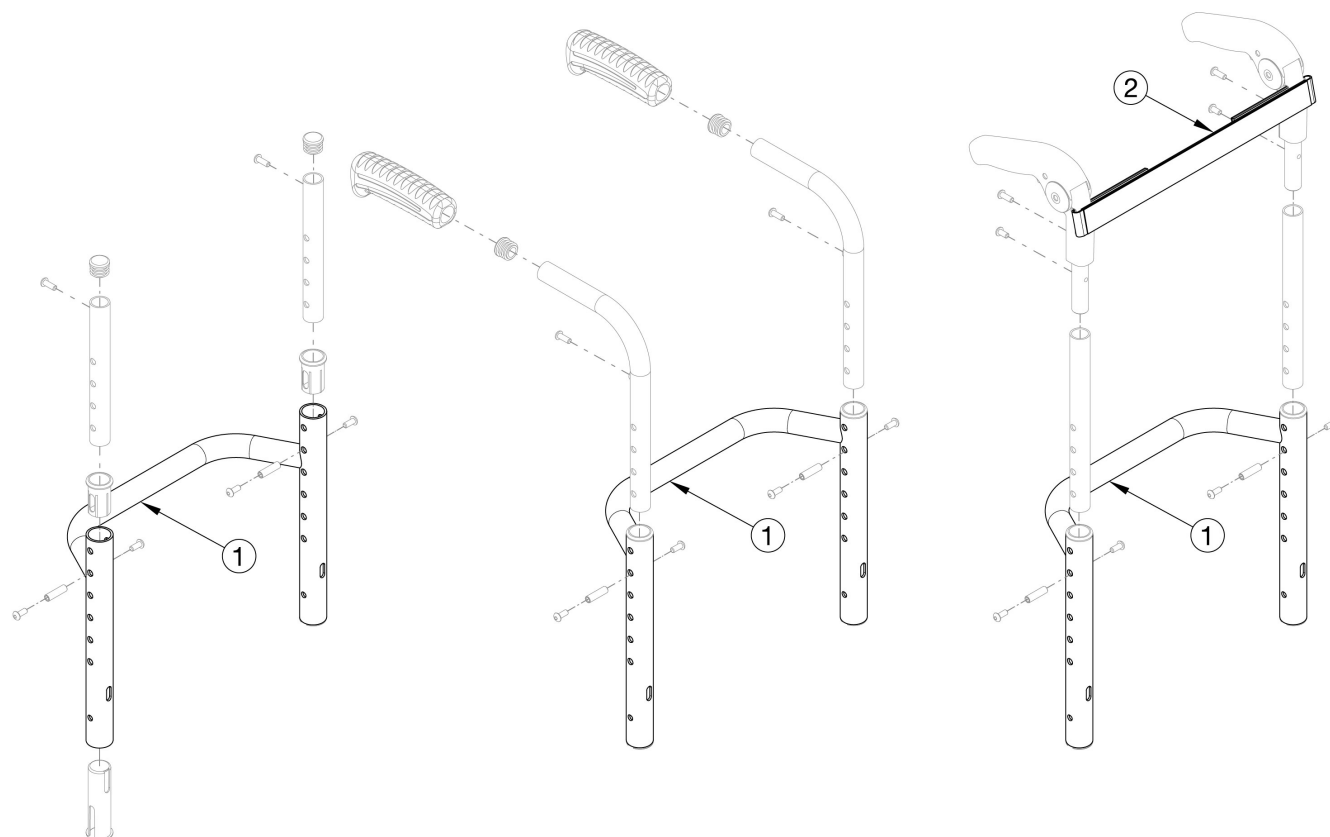


Rigid Height Adjustable Back Post with Non-Adjustable Height Rigidizer Bar - Growth



If chair shipped after 7/3/2025 and Rigidizer Mounted Stroller Handles are present, please refer to quote the appropriate Stroller Handle Page for the Rigidizer.

Item Number	Part Number	Description	Quantity
1a	115344	Rigid Backrest, 8.813", 12" Wide <i>Used with all standard, low profile, and omit push handle. Used with medium 14" - 17" and tall fold down push handle.</i>	1
1b	115345	Rigid Backrest, 8.813", 13" Wide <i>Used with all standard, low profile, and omit push handle. Used with medium 14" - 17" and tall fold down push handle.</i>	1
1c	115346	Rigid Backrest, 8.813", 14" Wide <i>Used with all standard, low profile, and omit push handle. Used with medium 14" - 17" and tall fold down push handle.</i>	1
1d	115347	Rigid Backrest, 8.813", 15" Wide <i>Used with all standard, low profile, and omit push handle. Used with medium 14" - 17" and tall fold down push handle.</i>	1
1e	115348	Rigid Backrest, 8.813", 16" Wide	1

Item Number	Part Number	Description	Quantity
		<i>Used with all standard, low profile, and omit push handle. Used with medium 14" - 17" and tall fold down push handle.</i>	
1f	115349	Rigid Backrest, 8.813", 17" Wide <i>Used with all standard, low profile, and omit push handle. Used with medium 14" - 17" and tall fold down push handle.</i>	1
1g	115350	Rigid Backrest, 8.813", 18" Wide <i>Used with all standard, low profile, and omit push handle. Used with medium 14" - 17" and tall fold down push handle.</i>	1
1h	115351	Rigid Backrest, 8.813", 19" Wide <i>Used with all standard, low profile, and omit push handle. Used with medium 14" - 17" and tall fold down push handle.</i>	1
1i	115352	Rigid Backrest, 8.813", 20" Wide <i>Used with all standard, low profile, and omit push handle. Used with medium 14" - 17" and tall fold down push handle.</i>	1
1j	115357	Rigid Backrest, 7.813", 12" Wide <i>Used with 13" medium fold down push handle</i>	1
1k	115358	Rigid Backrest, 7.813", 13" Wide <i>Used with 13" medium fold down push handle</i>	1
1l	115359	Rigid Backrest, 7.813", 14" Wide <i>Used with 13" medium fold down push handle</i>	1
1m	115360	Rigid Backrest, 7.813", 15" Wide <i>Used with 13" medium fold down push handle</i>	1
1n	115361	Rigid Backrest, 7.813", 16" Wide <i>Used with 13" medium fold down push handle</i>	1
1o	115362	Rigid Backrest, 7.813", 17" Wide <i>Used with 13" medium fold down push handle</i>	1
1p	115363	Rigid Backrest, 7.813", 18" Wide <i>Used with 13" medium fold down push handle</i>	1
1q	115364	Rigid Backrest, 7.813", 19" Wide <i>Used with 13" medium fold down push handle</i>	1
1r	115365	Rigid Backrest, 7.813", 20" Wide <i>Used with 13" medium fold down push handle</i>	1
1s	115370	Rigid Backrest, 6.813", 12" Wide <i>Used with short fold down push handle</i>	1
1t	115371	Rigid Backrest, 6.813", 13" Wide <i>Used with short fold down push handle</i>	1
1u	115372	Rigid Backrest, 6.813", 14" Wide <i>Used with short fold down push handle</i>	1
1v	115373	Rigid Backrest, 6.813", 15" Wide	1

Item Number	Part Number	Description	Quantity
		<i>Used with short fold down push handle</i>	
1w	115374	Rigid Backrest, 6.813", 16" Wide <i>Used with short fold down push handle</i>	1
1x	115375	Rigid Backrest, 6.813", 17" Wide <i>Used with short fold down push handle</i>	1
1y	115376	Rigid Backrest, 6.813", 18" Wide <i>Used with short fold down push handle</i>	1
1z	115377	Rigid Backrest, 6.813", 19" Wide <i>Used with short fold down push handle</i>	1
1aa	115378	Rigid Backrest, 6.813", 20" Wide <i>Used with short fold down push handle</i>	1
2a	001749	Tension Strap Folding Handle 12-13 Wide	1
2b	001750	Tension Strap Folding Handle 14-15 Wide	1
2c	001751	Tension Strap Folding Handle 16-17 Wide	1
2d	001752	Tension Strap Folding Handle 18-19 Wide	1
2e	001753	Tension Strap Folding Handle 20-22 Wide	1