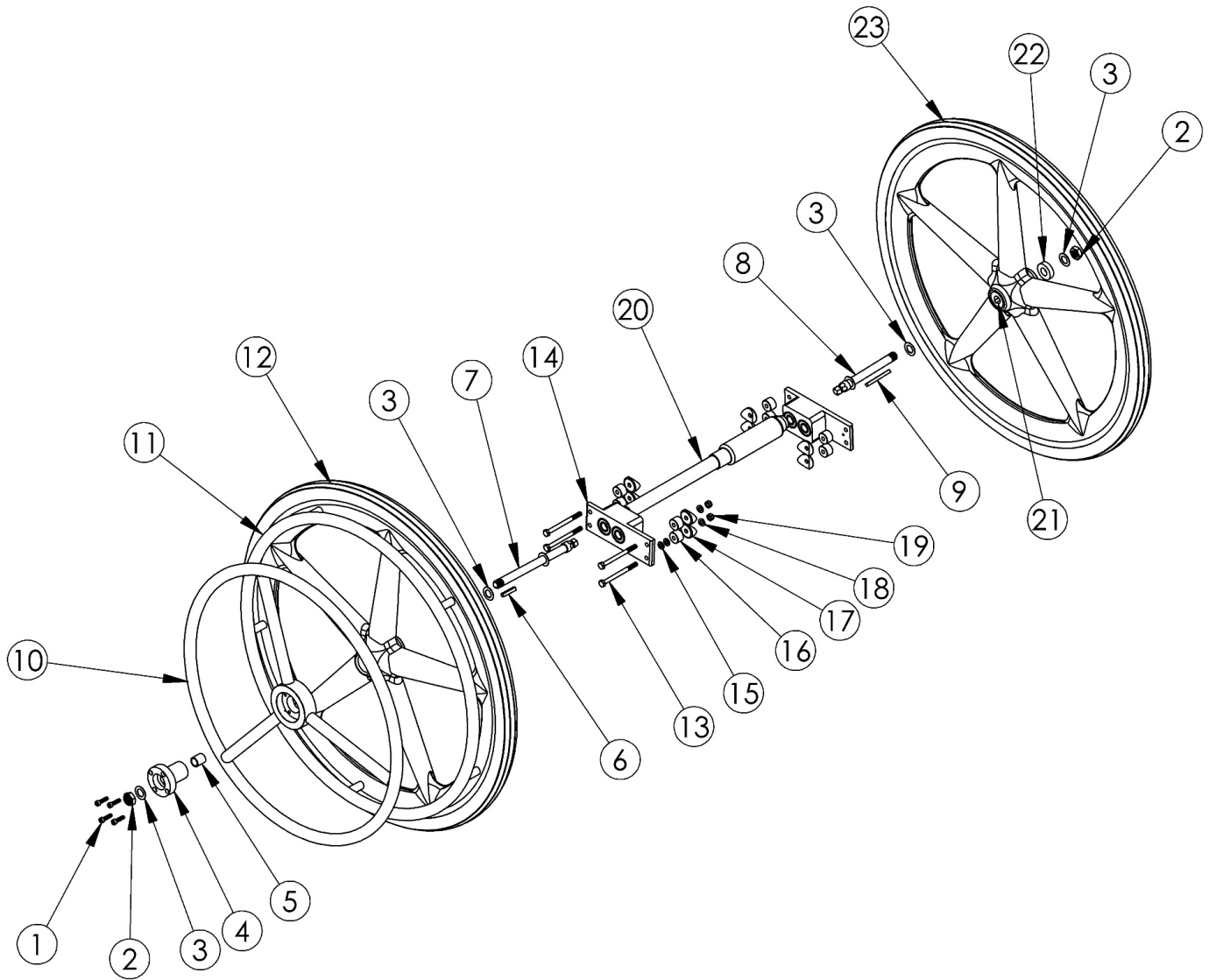


(Discontinued) Catalyst One Arm Drive Hex Style



One Arm Drive Kits do not include rear tires

Item Number	Part Number	Description	Quantity
13a-13j, 16-19	503433	Catalyst Hex One Arm Drive Attaching Hardware Kit <i>Includes all fasteners required to attach One Arm Drive regardless of chair configuration</i>	1
10a	003198	One Arm Drive Handrim Aluminum 24"	1
13a	100674	M6 x 45 CLS10.9 DIN931 HHCS ZC	4
13b	101826	M6 x 50 HHCS Blk Zn	8
13c	100676	M6 x 55 CLS10.9 DIN931 HHCS ZC	8

Item Number	Part Number	Description	Quantity
13d	100677	M6 x 60 CLS10.9 DIN931 HHCS ZC	8
13e	100679	M6 x 65 CLS 8.8 DIN931 HHCS ZC	8
13f	100680	M6 x 70 CLS 8.8 DIN931 HHCS ZC	4
13g	100544	M6 x 75 CLS 8.8 DIN931 HHCS ZC	4
13h	100660	M6 x 80mm CLS8.8 DIN931 HHCS ZC	4
13i	102996	M6 x 85mm HHCS Blk Zn	4
13j	100704	M6 x 90 CLS8.8 DIN931 HHCS ZC	4
14	003207	One Arm Drive Catalyst Axle Plate	1
15	100763	Washer #12 Thin	8
16	003172	One Arm Drive Cat Axle Plate Spacer	8
17a	000056	Saddle 1 1/8" <i>Used with Curved Rear Frames</i>	8
17b	000055	Saddle 1" <i>Used with Depth Adjustable / Spark Rear Frames</i>	8
18	100746	M6 Flat Washer Blk Zn	8
19	100658	M6 Nylock Nut Blk Zn	8

Catalyst One Arm Drive - Drive Shaft Utilization Chart

Chair Width	Armrest Type	Drive Shaft Measurement	Drive Shaft Part Number
14"	Angle Adj. Locking Flip Up, Tubular Flip Up, Pediatric T-Arm or No Armrests	10.75"	102639
	Flip Back, Height Adjustable Flip Back or T-Arm Armrests	12.75"	102641
15"	Angle Adj. Locking Flip Up, Tubular Flip Up, Pediatric T-Arm or No Armrests	11.75"	102640
	Flip Back, Height Adjustable Flip Back or T-Arm Armrests	13.84"	102642
16"	Angle Adj. Locking Flip Up, Tubular Flip Up, Pediatric T-Arm or No Armrests	12.75"	102641
	Flip Back, Height Adjustable Flip Back or T-Arm Armrests	14.69"	102643
17"	Angle Adj. Locking Flip Up, Tubular Flip Up, Pediatric T-Arm or No Armrests	13.84"	102642
	Flip Back, Height Adjustable Flip Back or T-Arm Armrests	15.69"	102644
18"	Angle Adj. Locking Flip Up, Tubular Flip Up, Pediatric T-Arm or No Armrests	14.69"	102643
	Flip Back, Height Adjustable Flip Back or T-Arm Armrests	16.69"	102645
19"	Angle Adj. Locking Flip Up, Tubular Flip Up, Pediatric T-Arm or No Armrests	15.69"	102644
	Flip Back, Height Adjustable Flip Back or T-Arm Armrests	17.69"	102646
20"	Angle Adj. Locking Flip Up, Tubular Flip Up, Pediatric T-Arm or No Armrests	16.69"	102645
	Flip Back, Height Adjustable Flip Back or T-Arm Armrests	18.69"	102647
21"	Angle Adj. Locking Flip Up, Tubular Flip Up, Pediatric T-Arm or No Armrests	17.69"	102646
	Flip Back, Height Adjustable Flip Back or T-Arm Armrests	19.69"	102751
22"	Angle Adj. Locking Flip Up, Tubular Flip Up, Pediatric T-Arm or No Armrests	18.69"	102647
	Flip Back, Height Adjustable Flip Back or T-Arm Armrests	20.69"	102752

Revised 5/6/2016

Ki Mobility Catalyst / Spark One Arm Drive Hardware Utilization Chart

CURVED REAR FRAME

	No Arms					
	0° Camber			2° Camber		
	Part Number	Description	Quantity Per Side	Part Number	Description	Quantity Per Side
No Options	100676	M6 x 55 HHCS Black ZN	4	100679	M6 x 65 HHCS ZN	4
	100746	M6 Flat Washer Blk Zn	4	100746	M6 Flat Washer Blk Zn	4
				000056	Saddle	4
Anti-Tips	100676	M6 x 55 HHCS Black ZN	2	100679	M6 x 65 HHCS ZN	2
	100677	M6 x 60 HHCS ZN	2	100680	M6 x 70 HHCS ZN	2
				000056	Saddle	4
				003172	Spacer	4
Transit	100676	M6 x 55 HHCS Black ZN	2	100679	M6 x 65 HHCS ZN	2
	100679	M6 x 65 HHCS ZN	2	100544	M6 x 75 HHCS ZN	2
	101826	M6 x 50 HHCS Black ZN	1	101826	M6 x 50 HHCS Black ZN	1
				000056	Saddle	4
Anti-Tips and Transit	101826	M6 x 50 HHCS Black ZN	2	100677	M6 x 60 HHCS ZN	2
	100679	M6 x 65 HHCS ZN	2	102996	M6 x 85 HHCS Black ZN	2
				101826	M6 x 50 HHCS Black ZN	1
				000056	Saddle	4
			003172	Spacer	4	

	Flip Back and T-Arms				
	0° or 2° Camber				
	Part Number	Description	Quantity Per Side		
No Options	100679	M6 x 65 HHCS ZN	4		
	000056	Saddle	4		
	003172	Spacer	4		
Anti-Tips	100680	M6 x 70 HHCS ZN	2		
	100679	M6 x 65 HHCS ZN	2		
	000056	Saddle	4		
	003172	Spacer	4		
Transit	102996	M6 x 85 HHCS Black ZN	2		
	100679	M6 x 65 HHCS ZN	2		
	100676	M6 x 55 HHCS Black ZN	1		
	000056	Saddle	4		
Anti-Tips and Transit	100660	M6 x 80 HHCS ZN	2		
	100679	M6 x 65 HHCS ZN	2		
	100676	M6 x 55 HHCS Black ZN	1		
	000056	Saddle	4		
			003172	Spacer	4

	Swing Away Arms				
	0° or 2° Camber				
	Part Number	Description	Quantity Per Side		
No Options	100679	M6 x 65 HHCS ZN	2		
	100544	M6 x 75 HHCS ZN	2		
	101826	M6 x 50 HHCS Black ZN	1		
	000056	Saddle	4		
			003172	Spacer	4
Anti-Tips	100677	M6 x 60 HHCS ZN	2		
	102996	M6 x 85 HHCS Black ZN	2		
	101826	M6 x 50 HHCS Black ZN	1		
	000056	Saddle	4		
			003172	Spacer	4
Transit	100677	M6 x 60 HHCS ZN	2		
	100660	M6 x 80 HHCS ZN	2		
	100676	M6 x 55 HHCS Black ZN	1		
	000056	Saddle	4		
Anti-Tips and Transit	100704	M6 x 90 HHCS ZN	2		
	100676	M6 x 55 HHCS Black ZN	1		
	100677	M6 x 60 HHCS ZN	2		
	000056	Saddle	4		
			003172	Spacer	4

DEPTH ADJUSTABLE / SPARK REAR FRAME

	Angle Adjustable Locking Flip Up, Tubular Flip Up, Pediatric T-Arm or No Arms					
	0° Camber			2° Camber		
	Part Number	Description	Quantity Per Side	Part Number	Description	Quantity Per Side
No Options	101826	M6 x 50 HHCS Black ZN	4	100677	M6 x 60 HHCS ZN	4
	100746	M6 Flat Washer Blk Zn	4	100746	M6 Flat Washer Blk Zn	4
				000055	Saddle	4
Anti-Tips	101826	M6 x 50 HHCS Black ZN	2	100677	M6 x 60 HHCS ZN	2
	100676	M6 x 55 HHCS Black ZN	2	100679	M6 x 65 HHCS ZN	2
				000055	Saddle	4
				003172	Spacer	4
Transit	101826	M6 x 50 HHCS Black ZN	2	100677	M6 x 60 HHCS ZN	2
	100677	M6 x 60 HHCS ZN	2	100680	M6 x 70 HHCS ZN	2
	100674	M6 x 45 HHCS ZN	1	100674	M6 x 45 HHCS ZN	1
				000055	Saddle	4
Anti-Tips and Transit	100674	M6 x 45 HHCS ZN	2	100676	M6 x 55 HHCS Black ZN	2
	100677	M6 x 60 HHCS ZN	2	100660	M6 x 80 HHCS ZN	2
				100674	M6 x 45 HHCS ZN	1
				000055	Saddle	4
			003172	Spacer	4	

	T-Arms				
	0° or 2° Camber				
	Part Number	Description	Quantity Per Side		
No Options	100677	M6 x 60 HHCS ZN	4		
	100746	M6 Flat Washer Blk Zn	4		
	000055	Saddle	4		
	003172	Spacer	4		
Anti-Tips	100679	M6 x 65 HHCS ZN	2		
	100677	M6 x 60 HHCS ZN	2		
	000055	Saddle	4		
	003172	Spacer	4		
Transit	100660	M6 x 80 HHCS ZN	2		
	100677	M6 x 60 HHCS ZN	2		
	101826	M6 x 50 HHCS Black ZN	1		
	000055	Saddle	4		
Anti-Tips and Transit	100544	M6 x 75 HHCS ZN	2		
	100677	M6 x 60 HHCS ZN	2		
	101826	M6 x 50 HHCS Black ZN	1		
	000055	Saddle	4		
			003172	Spacer	4