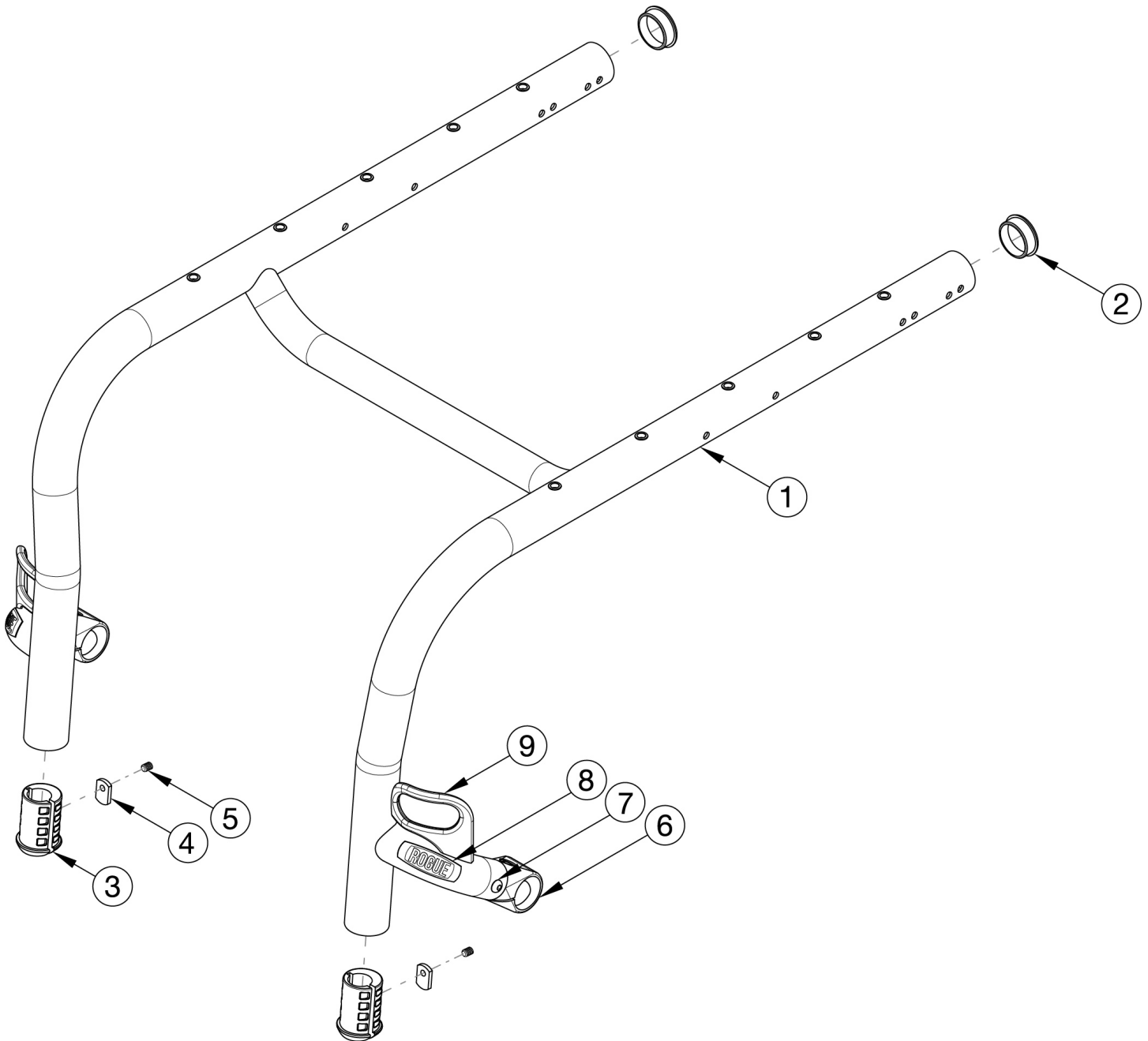


# Rogue Rigid Frame



Replacement rigid frames may be quoted, but must be ordered through Customer Service. Serial number required upon order. This design effective starting with serial number RG008800. Replacement Rogue Transit Frames will include front transit brackets only. To quote rear transit brackets, please see Rogue Transit page.

Item Number	Part Number	Description	Quantity
1a, 2-4a, 5, 6a, 7, 8	RFRG	Replacement Rogue Frame	1
1b, 2-4a, 5, 6a, 7, 8, 9	RFRGTRANS	Replacement Rogue Transit Frame	1
1c, 2-4a, 5, 6a, 7, 8	RFRGGIT	Replacement Rogue Frame w/ Graphic Image Transfer	1

Item Number	Part Number	Description	Quantity
1d, 2-4a, 5, 6b, 7, 8	RFRGCOL	Replacement Rogue Frame w/ Color Anodized Package	1
1e, 2-4a, 5, 6b, 7, 8, 9	RFRGTRANSCOL	Replacement Rogue Transit Frame w/ Color Anodized Package	1
1f, 2-4a, 5, 6b, 7, 8	RFRGGITCOL	Replacement Rogue Frame w/ Graphic Image Transfer and Color Anodized Package	1
2	101113	Tube End Plug 1 3/8" <i>Use quantity 4 with high-mounted footrests. Extra plugs are inserted into front of frame.</i>	2
3	001346	Footrest Sleeve 3/4" to 1 3/8" <i>Used only with frame-inserted footrests. Use item 2 for high-mounted footrests.</i>	2
4a	001141	Weld Nut NDM 06028 Zinc <i>Used only with frame-inserted footrests. Use item 2 for high-mounted footrests.</i>	2
4b	102092	M6 Weld Nut Offset <i>Used only as needed with frame-inserted footrests. Use item 2 for high-mounted footrests.</i>	2
5	102090	M6 Set Screw Flat Point <i>Used only with frame-inserted footrests. Use item 2 for high-mounted footrests.</i>	2
8	002473	Aluminum Wing Badge Rogue	2

# Color Anodizing Samples

