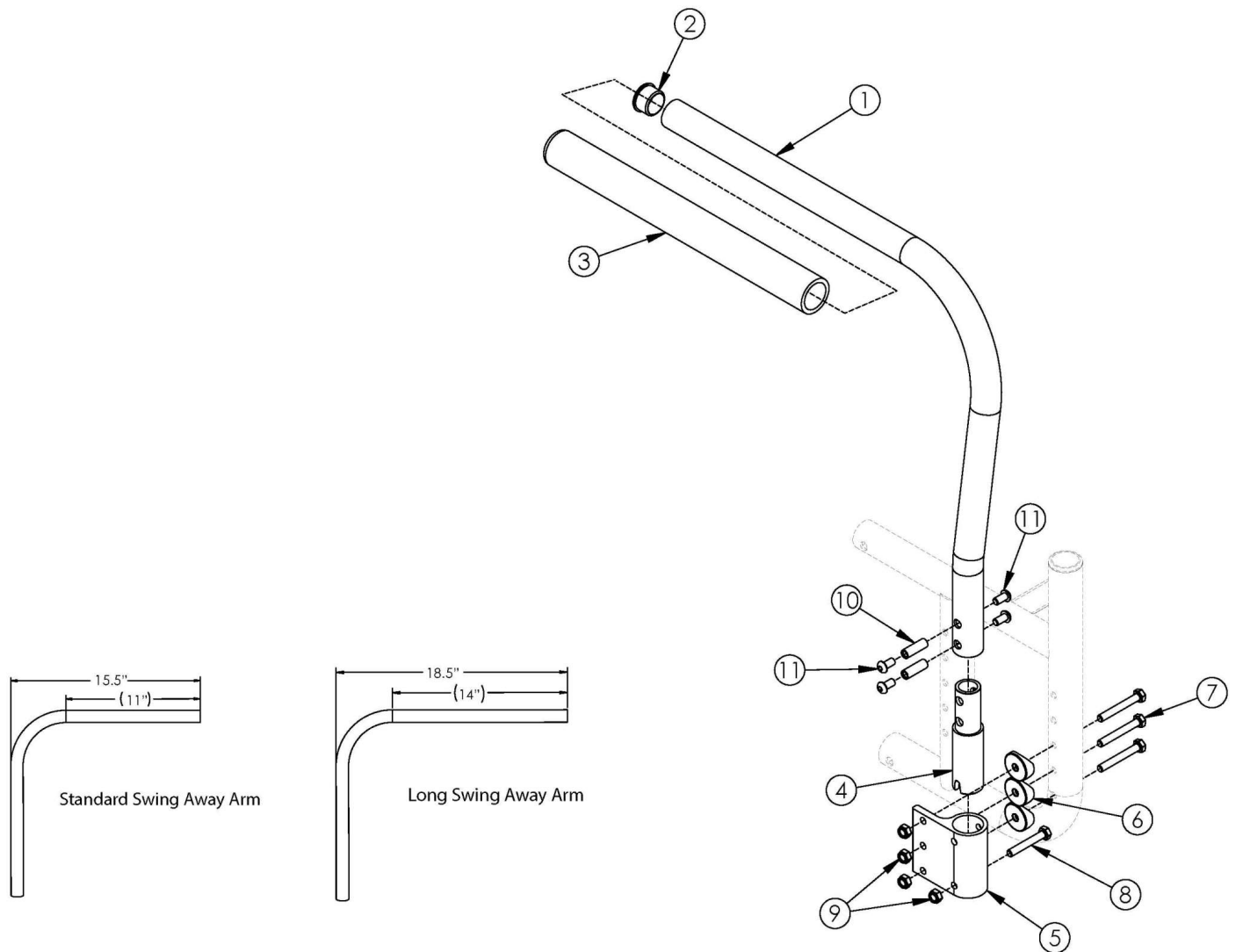


# Catalyst Swing Away Armrest



For call out #7 - please reference the "Catalyst Axle Plate" parts manual pages to ensure the proper hardware is selected for the chair configuration. If retrofitting, receivers are needed.

Item Number	Part Number	Description	Quantity
1a, 2-4, 10, 11	500500	Tubular Swing Away Armrest Assembly Left CAT	1
1b, 2-4, 10, 11	500501	Tubular Swing Away Armrest Assembly Right CAT	1
1a, 1b, 2-4, 10, 11	500588	Tubular Swing Away Armrest Assembly Pair CAT	1
1c, 2-4, 10, 11	501480	Tubular Long Swing Away Armrest Assembly Left CAT <i>Check Invoice for length when replacing armrests</i>	1
1d, 2-4, 10, 11	501481	Tubular Long Swing Away Armrest Assembly Right CAT <i>Check Invoice for length when replacing armrests</i>	1

Item Number	Part Number	Description	Quantity
1c, 1d, 2-4, 10, 11	501482	Tubular Long Swing Away Armrest Assembly Pair CAT <i>Check Invoice for length when replacing armrests</i>	1
5, 6, 7, 8, 9	502283	Tubular Swing Away Armrest Receiver Kit CAT	1
1a, 2-11	502284	Tubular Swing Away Armrest w/ Receiver Kit Left CAT	1
1b, 2-11	502285	Tubular Swing Away Armrest w/ Receiver Kit Right CAT	1
1a, 1b, 2-11	502286	Tubular Swing Away Armrest w/ Receiver Kit PAIR CAT	1
1c, 2-11	502287	Tubular Long Swing Away Armrest w/ Receiver Kit Left CAT <i>Check Invoice for length when replacing armrests</i>	1
1d, 2-11	502288	Tubular Long Swing Away Armrest w/ Receiver Kit Right CAT <i>Check Invoice for length when replacing armrests</i>	1
1c, 1d, 2-11	502289	Tubular Long Swing Away Armrest w/ Receiver Kit PAIR CAT <i>Check Invoice for length when replacing armrests</i>	1
2	100804	Tube End Plug 1"	1
4	000267	Armrest Swing Away Lower CAT	1
5	000044	Armrest Swing Away Receiver Cat	1
6	000056	Saddle 1 1/8"	3
7	100674	M6 x 45 CLS10.9 DIN931 HHCS ZC	3
8	100681	M6 x 40 CLS8.8 DIN931 HHCS ZC	1
9	100658	M6 Nylock Nut Blk Zn	4
10	000065	M6 x 23.68 Threaded Barrel	2
11	100667	M6 x 12 BTN SHCS BLKZC w/Patch	4